

SEE INSET "A"

SEE INSET "B"

SEE INSET "C"

SEE INSET "E"

SEE INSET "D"

22.698 Acres

Lot 28
(ROADWAY)
21,752 sq. ft.

Lot 29
(ROADWAY)
11,326 sq. ft.

Lot 27
(ROADWAY)
16,117 sq. ft.

Lot 25
(ROADWAY)

GROSS AREA = 4.831 Acres
Less Existing
Government Road = 1.512 Acres
NET AREA = 3.259 Acres

2
122.310 Acres

Old Parsonage

Guleh
Flood Irrigation

Easement W-4
For Waterline Purposes
(10 Feet Wide)

Easement W-2
For Waterline Purposes
(10 Feet Wide)

MAHIKONA - NIULII GOVERNMENT ROAD

FOLLOWS

TOP

283°02' 119.42
13°02' 10.00

284°38'15" 163.93

285°59'51" 9.86
R = 1165.00

283°02' 119.42
13°02' 10.00

SEE INSET "A"

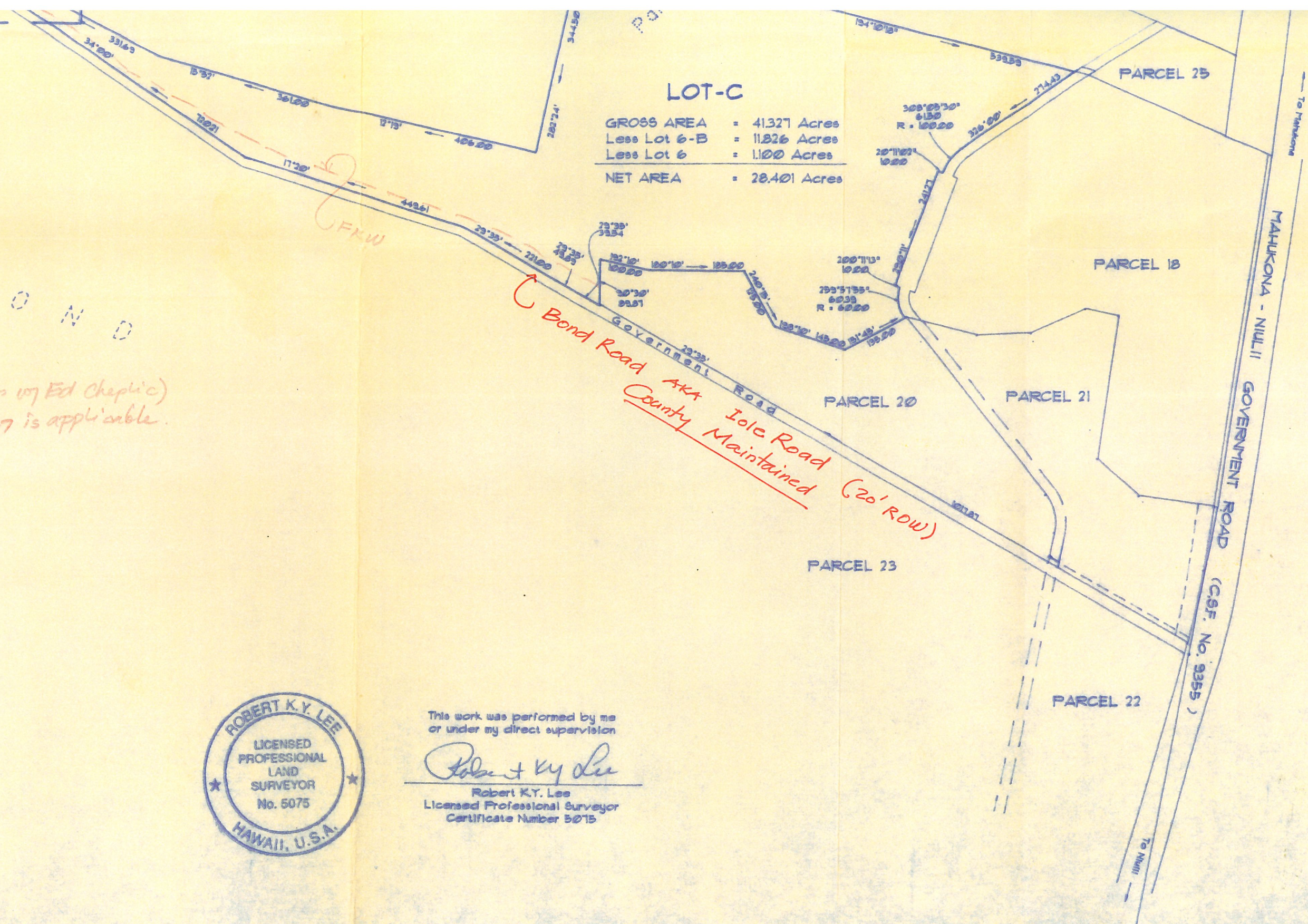
A
S

B
O
N
D

8/26/97
Planning Dept. (John W Ed Chepic)
determines that S 23.7 is applicable.

LOT-C

GROSS AREA	=	41.327 Acres
Less Lot 6-B	=	11.826 Acres
Less Lot 6	=	1.100 Acres
NET AREA	=	28.401 Acres



This work was performed by me
or under my direct supervision

Robert K.Y. Lee

Robert K.Y. Lee
Licensed Professional Surveyor
Certificate Number 5075