

LINDA LINGLE  
GOVERNOR  
STATE OF HAWAII



MICAH A. KANE  
CHAIRMAN  
HAWAIIAN HOMES COMMISSION

BEN HENDERSON  
DEPUTY TO THE CHAIRMAN

KAULANA H. PARK  
EXECUTIVE ASSISTANT

STATE OF HAWAII  
DEPARTMENT OF HAWAIIAN HOME LANDS

P.O. BOX 1879

HONOLULU, HAWAII 96805

September 9, 2004

bc: Reading File  
Hawaii Commissioners  
Hawaii District Off  
LDD  
HSD  
LMD  
PO Staff: JC/DO/RF  
County Land Use Ord  
Waiakea, Hawaii

The Honorable Christopher J. Yuen  
Planning Director  
County of Hawaii  
25 Aupuni Street, Room 109  
Hilo, Hawaii 96720-4252

Dear Mr. Yuen:

Subject: **Zoning for Waiakea Commercial Lots**

In accord with Section III. provisions in the 2002 Memorandum of Agreement (MOA) between the County of Hawaii and the Department of Hawaiian Home Lands, the zoning district selected for parcels fronting Makaala Street, identified by Tax Map Key 2-2-47: por 65, 70 and 74, is **CG-20** (general commercial, minimum building site area of 20,000 square feet).

The subject area is delineated on the enclosed plat maps.

If you have any questions or concerns regarding this determination, please call Darrell Yagodich at 586-3836.

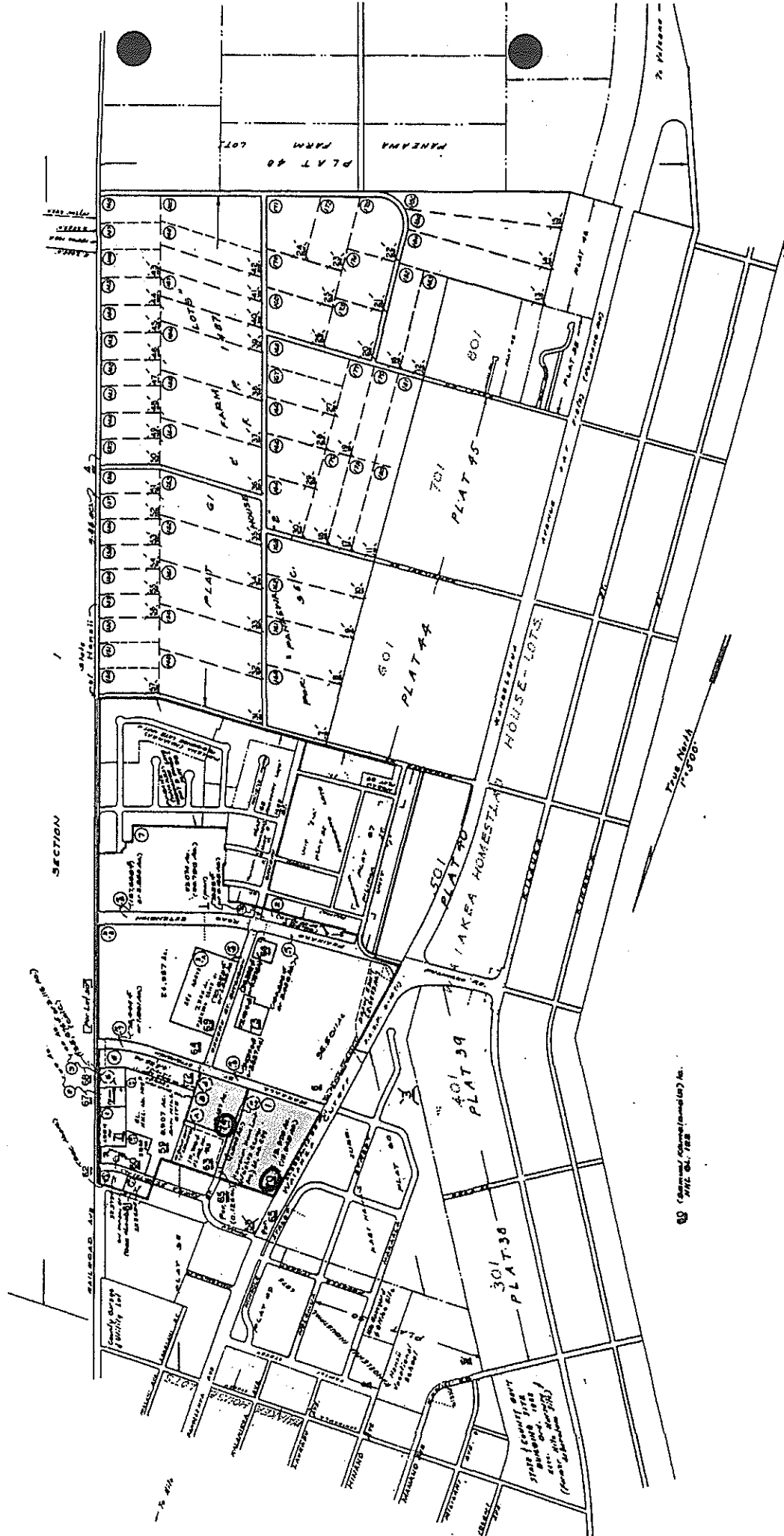
Aloha and mahalo,

Micah A. Kane, Chairman  
Hawaiian Homes Commission

Enc.

COPY

- 62 Hawaiian Home Lands (Hawaii Home Loan Corporation) (Hawaii Home Loan Corporation) (Hawaii Home Loan Corporation)
- 63 Hawaiian Home Lands (Hawaii Home Loan Corporation) (Hawaii Home Loan Corporation) (Hawaii Home Loan Corporation)
- 64 Hawaiian Home Lands (Hawaii Home Loan Corporation) (Hawaii Home Loan Corporation) (Hawaii Home Loan Corporation)
- 65 Hawaiian Home Lands (Hawaii Home Loan Corporation) (Hawaii Home Loan Corporation) (Hawaii Home Loan Corporation)
- 66 Hawaiian Home Lands (Hawaii Home Loan Corporation) (Hawaii Home Loan Corporation) (Hawaii Home Loan Corporation)
- 67 Hawaiian Home Lands (Hawaii Home Loan Corporation) (Hawaii Home Loan Corporation) (Hawaii Home Loan Corporation)



Revised August 2, 1960  
1/4 of 1/2 of 1/4

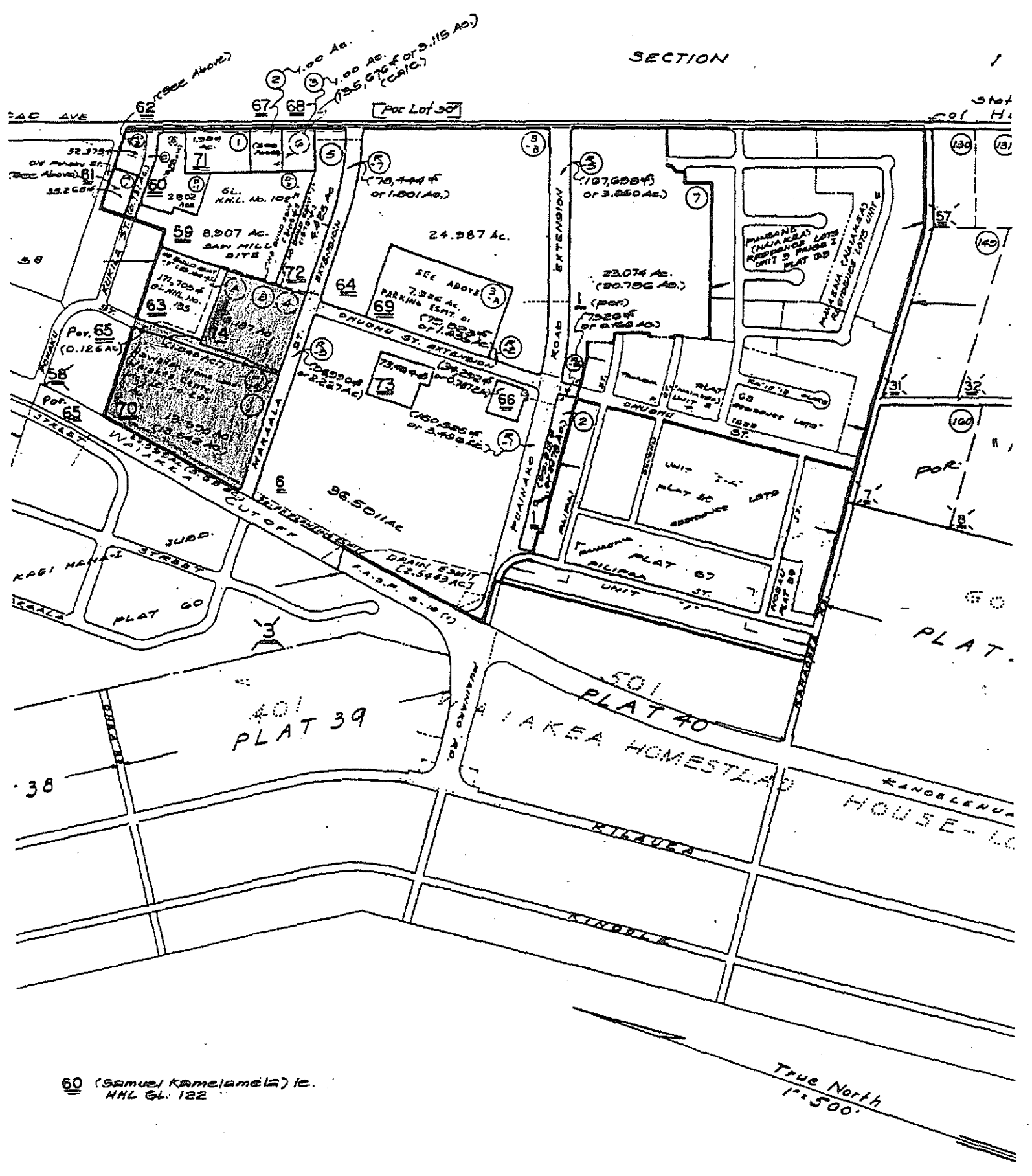
THIRD ZONE	DIVISION
2	2
SECTION	PLAT
2	2
47	47

SCALE: 1 INCH = 20 FEET  
PRINTED

NOTE: All lots owned by Hawaiian Home Loans unless otherwise noted.

ADVANCE SHEET  
SUBJECT TO CHANGE

SECTION



240 AVE

304  
401 H.

1.00 AC.  
1.00 AC. OF 3.115 AC.  
(CALC.)

62 (See Above)

67 68

[Por Lot 30]

32.375 AC.  
ON HAWAII ST.  
(See Above) 61  
35.260 AC.

1.384 AC.  
N.H.L. No. 102

2800 AC.

59 8.907 AC.  
SAN HILL SITE

17,700 AC.  
N.H.L. No. 102

63 725

Por. 65  
(0.126 AC.)

58

24.987 AC.

SEE ABOVE 3A  
7.324 AC.  
PARKING EST. OF  
(70,000 SF)  
OF 1,000 AC.

64 69

23.074 AC.  
(20,756 AC.)

107,000 SF  
OF 3.050 AC.

(Por)  
7520 SF  
OF 0.160 AC.

70

73,000 SF (0.371 AC.)

750,000 SF  
OF 3.480 AC.

66 67

23.074 AC.  
(20,756 AC.)

68 RESERVE LOTS  
1500 SF

60

36.501 AC.

501  
PLAT 40

LAKEA HOMESTEAD

PLAT 67

UNIT 7

PLAT 60

38

401  
PLAT 39

KANOLENUA  
HOUSE-LL

True North  
1"=500'