

COUNTY OF HAWAII - STATE OF HAWAII

ORDINANCE NO. 84 40

AN ORDINANCE AMENDING CHAPTER 16 (THE GENERAL PLAN) OF THE HAWAII COUNTY CODE 1983, AS AMENDED, BY AMENDING THE GENERAL PLAN LAND USE PATTERN ALLOCATION GUIDE MAP RELATING TO HONOKAA, HAMAKUA.

BE IT ORDAINED BY THE COUNCIL OF THE COUNTY OF HAWAII:

SECTION 1. Chapter 16 of the Hawaii County Code is amended by amending the General Plan Land Use Pattern Allocation Guide Map for approximately 2.8 acres of land, identified by Tax Map Key 4-5-10:85 and located at Paalaea and Papaanui, Honokaa, Hamakua, from a "Low Density Urban Development" to a "Medium Density Urban Development" designation.

SECTION 2. In the event that any portion of this ordinance is declared invalid, such invalidity shall not affect the other parts of this ordinance.

SECTION 3. This ordinance shall take effect upon its approval.

INTRODUCED BY:


COUNCIL MEMBER, COUNTY OF HAWAII

Hilo, Hawaii

Date of Introduction: July 3, 1984
Date of First Reading: July 3, 1984
Date of Second Reading: July 25, 1984
Effective Date: July 31, 1984

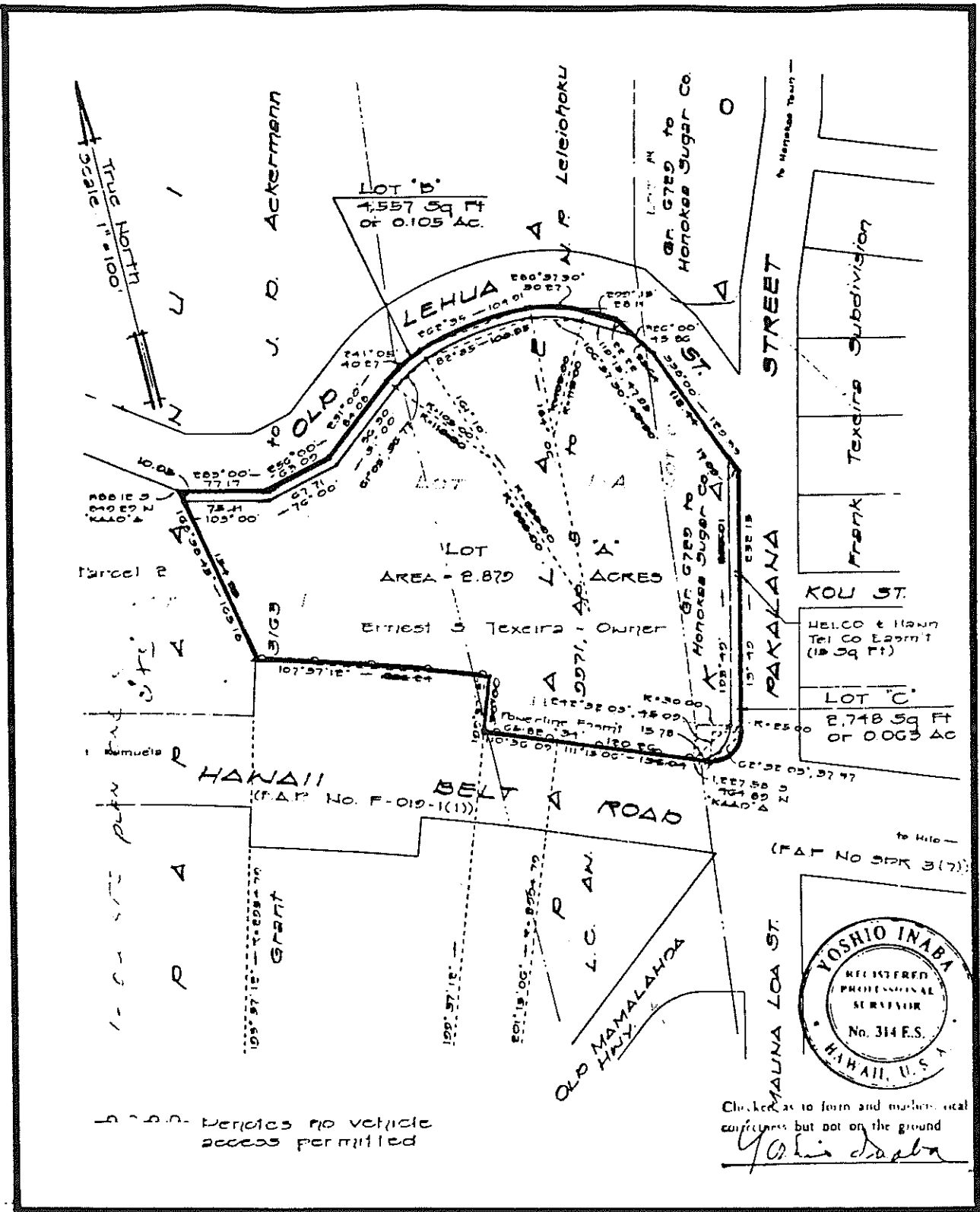


FIGURE 4. SURVEYORS MAP