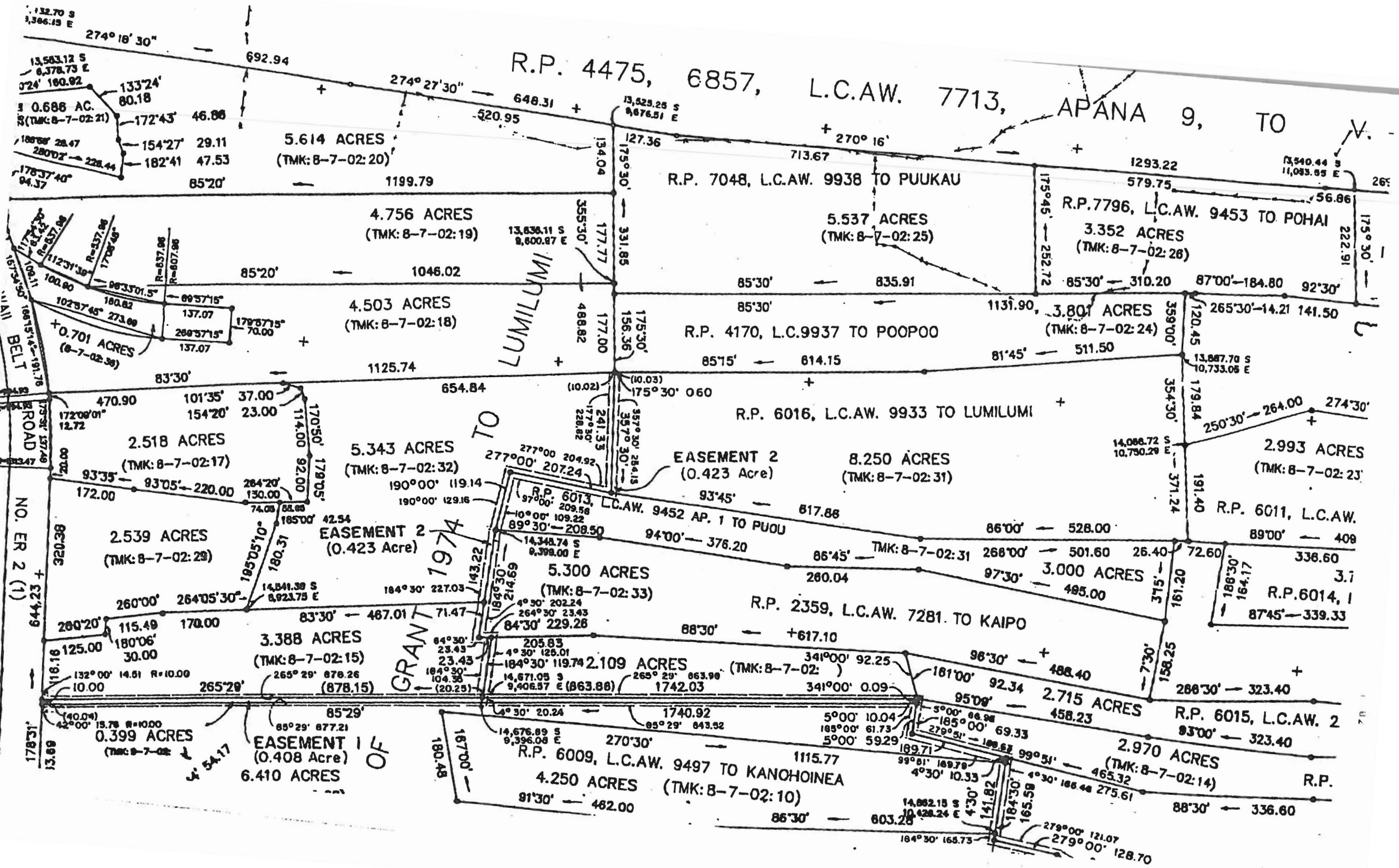


R.P. 4475, 6857, L.C.A.W. 7713, APANA 9, TO V.



132.70 S
3,366.15 E
274° 18' 30"
692.94
13,583.12 S
6,378.73 E
024' 180.92
133° 24' 80.18
0.688 AC.
(TMK: 8-7-02: 21)
180° 28' 28.47
280° 02' 228.44
178° 37' 40" 94.37
154° 27' 29.11
182° 41' 47.53
85° 20'
1199.79

5.614 ACRES
(TMK: 8-7-02: 20)

4.756 ACRES
(TMK: 8-7-02: 19)

4.503 ACRES
(TMK: 8-7-02: 18)

2.518 ACRES
(TMK: 8-7-02: 17)

2.539 ACRES
(TMK: 8-7-02: 29)

3.388 ACRES
(TMK: 8-7-02: 15)

0.399 ACRES
(TMK: 8-7-02:)

EASEMENT 1 OF
(0.408 Acre)
6.410 ACRES

5.343 ACRES
(TMK: 8-7-02: 32)

EASEMENT 2
(0.423 Acre)

5.300 ACRES
(TMK: 8-7-02: 33)

2.109 ACRES
(TMK: 8-7-02:)

R.P. 6009, L.C.A.W. 9497 TO KANOHOINEA
4.250 ACRES
(TMK: 8-7-02: 10)

R.P. 7048, L.C.A.W. 9938 TO PUUKAU

5.537 ACRES
(TMK: 8-7-02: 25)

R.P. 4170, L.C.9937 TO POOPOO

R.P. 6016, L.C.A.W. 9933 TO LUMILUMI

EASEMENT 2
(0.423 Acre)

8.250 ACRES
(TMK: 8-7-02: 31)

R.P. 6013, L.C.A.W. 9452 AP. 1 TO PUOU

R.P. 2359, L.C.A.W. 7281 TO KAIPO

2.109 ACRES
(TMK: 8-7-02:)

R.P. 6009, L.C.A.W. 9497 TO KANOHOINEA
4.250 ACRES
(TMK: 8-7-02: 10)

R.P. 7796, L.C.A.W. 9453 TO POHAI
3.352 ACRES
(TMK: 8-7-02: 26)

3.801 ACRES
(TMK: 8-7-02: 24)

2.993 ACRES
(TMK: 8-7-02: 23)

R.P. 6011, L.C.A.W.

R.P. 6014, 1

R.P. 6015, L.C.A.W. 2

R.P.

ALL BELT ROAD NO. ER 2 (1)

LUMILUMI

GRANT 1974