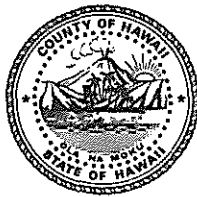


Stephen K. Yamashiro
Mayor



Virginia Goldstein
Director

Norman Olesen
Deputy Director

County of Hawaii

PLANNING DEPARTMENT

25 Aupuni Street, Room 109 • Hilo, Hawaii 96720-4252
(808) 961-8288 • Fax (808) 961-9615

January 4, 1996

Mr. Gordon Inaba
Inaba Engineering, Inc.
273 Waiuanuenue Avenue
Hilo, HI 96720

Dear Mr. Inaba:

Determination of Pre-Existing Lots
Richard Smart Revocable Personal Trust
Waikoekoe Lots
Waikoekoe and Lalakea, Hamakua Hawaii
TMK: 4-7-07:15

We have recently been asked by Title Guaranty Escrow Services, Inc. to verify our letter of May 26, 1995 to you to determine the status of Waikoekoe Lots. Our letter concurred that Waikoekoe Lots were created prior to the Planning Department and the Planning and Traffic Commission's administration of the County's Subdivision requirements, however, our letter referenced an incorrect Tax Map Key. The correct Tax Map Key is 4-7-07:15 and not 4-4-07:13.

We apologize for any inconvenience this error may have caused. Should you have any questions, please contact Rodney Nakano of my staff.

Sincerely,

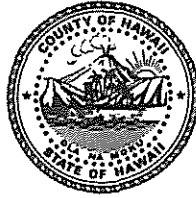

VIRGINIA GOLDSTEIN
Planning Director

RKN:dmo
LInaba1.rkn

00135

JAN 04 1996

Stephen K. Yamashiro
Mayor



Virginia Goldstein
Director

Norman Olesen
Deputy Director

County of Hawaii

PLANNING DEPARTMENT

25 Aupuni Street, Room 109 • Hilo, Hawaii 96720-4252
(808) 961-8288 • Fax (808) 961-9615

May 26, 1995

Gordon Inaba
Inaba Engineering, Inc.
273 Waianuenue Avenue
Hilo, HI 96720

Dear Mr. Inaba:

Determination of Pre-Existing Lots
Richard Smart Revocable Personal Trust
Waikoekoe Lots
Waikoekoe and Lalakea, Hamakua, Hawaii
TMK: 4-4-07:13 15

*RECEIVED
MAY 26 1995*

This is to acknowledge receipt of your recent letter containing the documents regarding the subject property.

Please be advised that based upon the document submitted and a review of our records, as well as those of the Real Property Tax Division, we find the above referenced subdivision is a pre-existing subdivision established prior to the first County-wide Subdivision Ordinance of November 22, 1944.

Should you have any questions, please feel free to contact Ed Cheplic of this department.

Sincerely,

Rodney K. Nakano

Virginia Goldstein
VIRGINIA GOLDSTEIN
Planning Director

EC:lm
6563D(11)

xc/map: Tax Map Section-HONOLULU
Real Property Tax Division-HILO

MAY 30 1995
Rec. 1 5281

TRUE NORTH

WAIPIO VALLEY

HAMAKUA

FOREST

RESERVE

KEEA

U

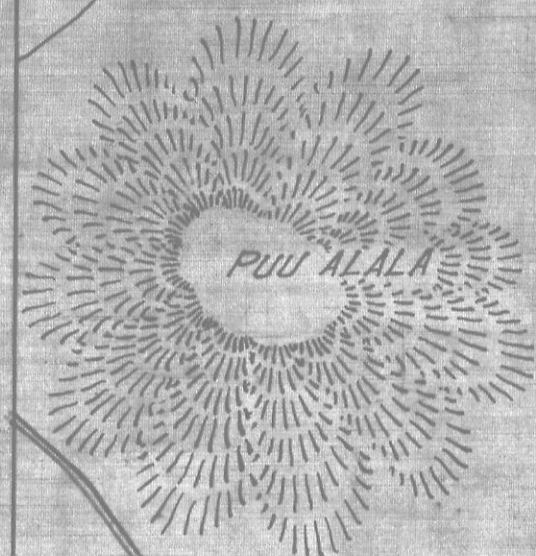
K

O

M

A

K



PUU ALALA

Deed of Kamehameha IV to W.C. Lunaliio
LALAKEA
Boundary Certificate
AW Carter
Guardian

Sold by Samuel Parker
Parker Ranch -
163+ Acres
Lalakea
Waikoeke

699 Ac.
Baker
Est

John Baker
Reservation
300 Ac.

John Baker
Estate

PUUKAPU

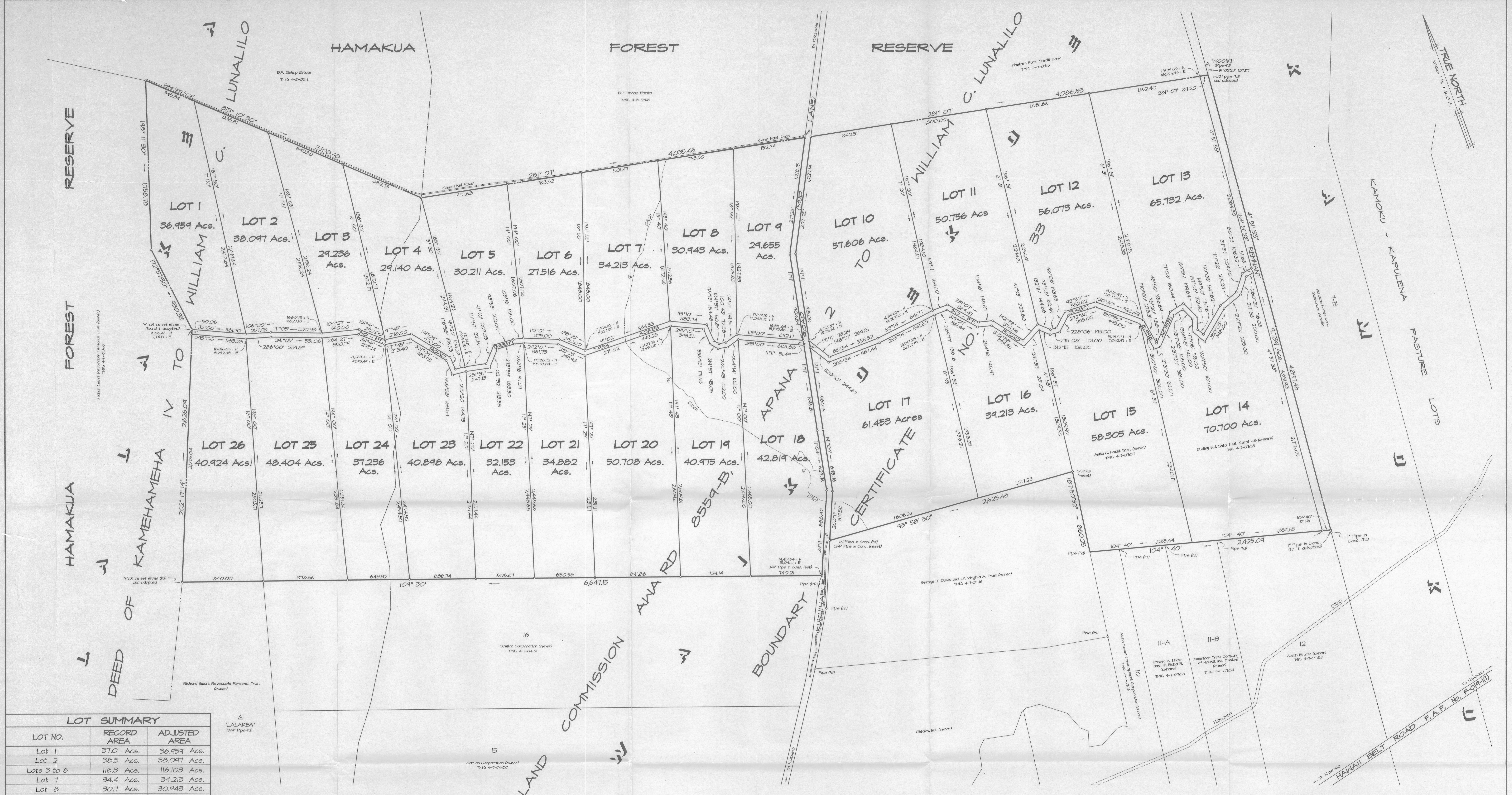
HOMESTEADS

2ND SERIES

Kalapapohaku
+ on rock

PORTION OF
LALAKEA & WAIKOEKOE
HAMAKUA, HAWAII, T.H
Scale. 1 in = 1000 ft.
Wright, Harvey & Wright.
Sept. 29 1934.





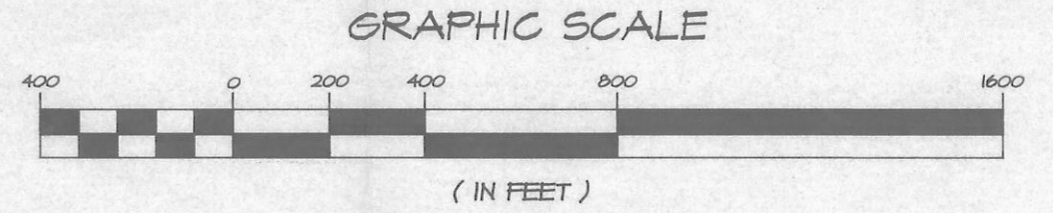
LOT SUMMARY		
LOT NO.	RECORD AREA	ADJUSTED AREA
Lot 1	37.0 Ac.	36.959 Ac.
Lot 2	38.5 Ac.	38.097 Ac.
Lots 3 to 6	116.3 Ac.	116.103 Ac.
Lot 7	34.4 Ac.	34.213 Ac.
Lot 8	30.7 Ac.	30.943 Ac.
Lot 9	28.9 Ac.	29.655 Ac.
Lot 10	58.6 Ac.	57.606 Ac.
Lot 11	51.4 Ac.	50.756 Ac.
Lot 12	57.3 Ac.	56.073 Ac.
Lot 13	68.0 Ac.	65.732 Ac.
Lot 14	70.6 Ac.	70.700 Ac.
Lot 15	58.3 Ac.	58.305 Ac.
Lot 16 & 17	100.64 Ac.	100.666 Ac.
Lot 18	43.0 Ac.	42.819 Ac.
Lot 19	40.5 Ac.	40.975 Ac.
Lot 20	51.7 Ac.	50.708 Ac.
Lots 21 & 22	66.2 Ac.	67.035 Ac.
Lot 23	40.3 Ac.	40.898 Ac.
Lot 24	37.5 Ac.	37.236 Ac.
Lot 25	47.3 Ac.	48.404 Ac.
Lot 26	40.4 Ac.	40.924 Ac.
TOTAL LOT AREAS	1,117.54 Ac.	1,114.807 Ac.
50-ft. Road (West)		7.934 Ac.
50-ft. Road (East)		6.946 Ac.
Remnant		9.784 Ac.
TOTAL AREA		1,139.716 Ac.

PREPARED FOR:
 Melvin B. Hewett, Trustee
 Richard Smart Revocable Personal Trust
 dba Parker Ranch
 P.O. Box 458
 Kamuela, Hawaii 96743

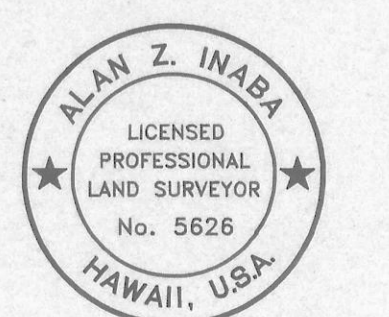
- NOTES:
- Map prepared from metes & bounds descriptions of lots compiled from available recorded deeds.
 - Azimuths and coordinates referred to "WAIMEA EAST BASE 1948" Triangulation Station.
 - Available record azimuths and distances of lots were adjusted for mathematical correctness and closures.

WAIKOEKOE LOTS

BEING A PORTION OF LAND COMMISSION AWARD 8559-B
 APANA 2 TO WILLIAM C. LUNALILO (BOUNDARY CERTIFICATE NO. 33)
 AND A PORTION OF DEED OF KAMEHAMEHA IV TO WILLIAM C. LUNALILO
 SITUATED AT WAIKOEKOE AND LALAKEA
 HAMAKUA, ISLAND OF HAWAII, HAWAII
 TAX MAP KEY: 3rd DIV. 4-7-07:15



INABA ENGINEERING, INC.
 273 Wai'anae Ave.
 Hilo, Hawaii 96720



This work was prepared by me or under my supervision.
 Alan Z. Inaba
 May 3, 1995
 IEI #91043 FB #252
 H:\PKR-RCH\WIKI\WIKI

27"x40" = 750 Sq. Ft.