

W A I K O L A

R.P. 5671, L.C. Aw. 8521-B, Ap. 1 to G.D. Hueu

NOTE:
Azimuths and Coordinates referred to "WAIMEA EAST BASE" Δ

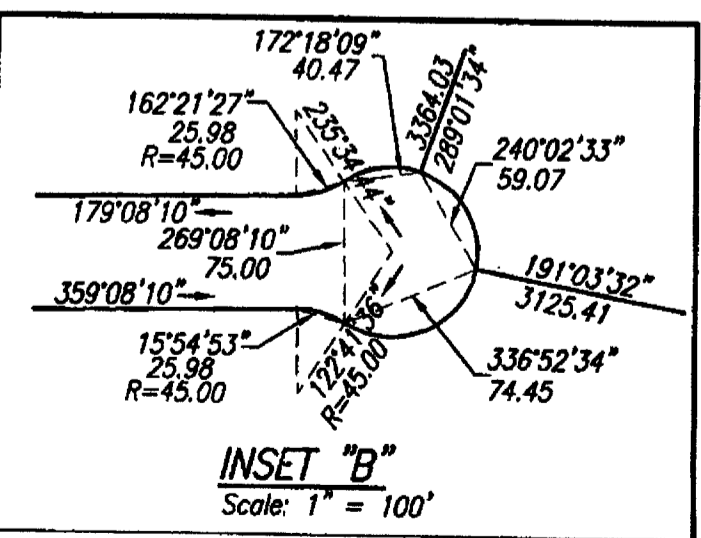
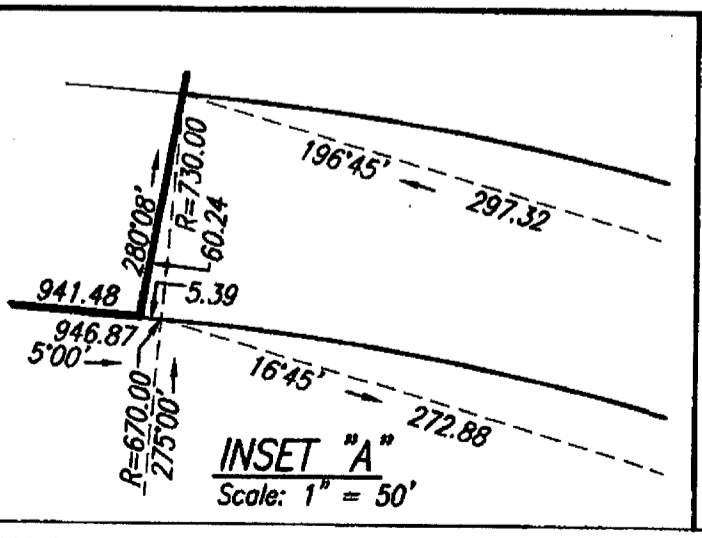
**PUUKAPU PASTURE LOTS
SECTION 1-C**

PLAN SHOWING

SUBDIVISION OF LOT 170 OF
PUUKAPU PASTURE LOTS, SECTION 1-A
INTO LOTS 1 TO 8, INCLUSIVE AND LOT R-1

AT PUUKAPU, WAIMEA, SOUTH KOHALA
ISLAND OF HAWAII, HAWAII
TAX MAP KEY: 3RD. DIV. 6-4-04 :

OWNER: HAWAIIAN HOME LANDS
**ADDRESS: 91-5420 KAPOLEI PARKWAY, ROOM 124
KAPOLEI, HAWAII 96707**



This work was prepared by me or under my direct supervision.
Engineers Surveyors Hawaii, Inc.
Kendall N. H. Hee Exp. 4-30-10
Licensed Professional Land Surveyor
Certificate Number 5649

ENGINEERS SURVEYORS HAWAII, INC.
CIVIL ENGINEERS - SURVEYORS - PLANNERS