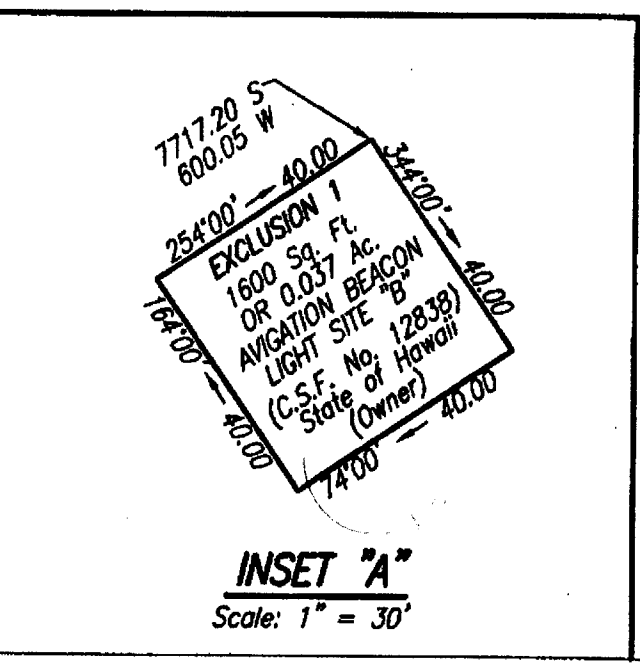


Deed: Hawaiian Homes Commission to Richard Smart dated July 7, 1956 and recorded in Liber J138, page 426.

NOTE: Azimuths and Coordinates referred to "WAIMEA EAST BASE" Δ



This work was prepared by me or under my direct supervision. Engineers Surveyors Hawaii, Inc.
 Kendall N. H. Hee Exp.: 4-30-10
 Licensed Professional Land Surveyor
 Certificate Number 5649

PUUKAPU PASTURE LOTS SECTION 1-B

PLAN SHOWING

SUBDIVISION OF LOT 16 OF
 PUUKAPU PASTURE LOTS, SECTION 1
 (FILE PLAN 1769)
 INTO LOTS 16-A AND 16-B
 AND SUBDIVISION OF PORTION
 OF LOT 23 (F.P. 1769) INTO
 LOTS 23-A, 23-B AND 23-C

AT PUUKAPU, WAIMEA, SOUTH KOHALA ISLAND OF HAWAII, HAWAII
 TAX MAP KEY: 3RD. DIV. 6-4-04 : 9 (Por.) and 47

OWNER: HAWAIIAN HOME LANDS
ADDRESS: 91-5420 KAPOLEI PARKWAY, ROOM 124 KAPOLEI, HAWAII 96707

89-74.1

HONOLULU, HAWAII
 89-74.1

ENGINEERS SURVEYORS HAWAII, INC.
 CIVIL ENGINEERS - SURVEYORS - PLANNERS

1020 AUAHI ST.
 OCTOBER 4, 1990