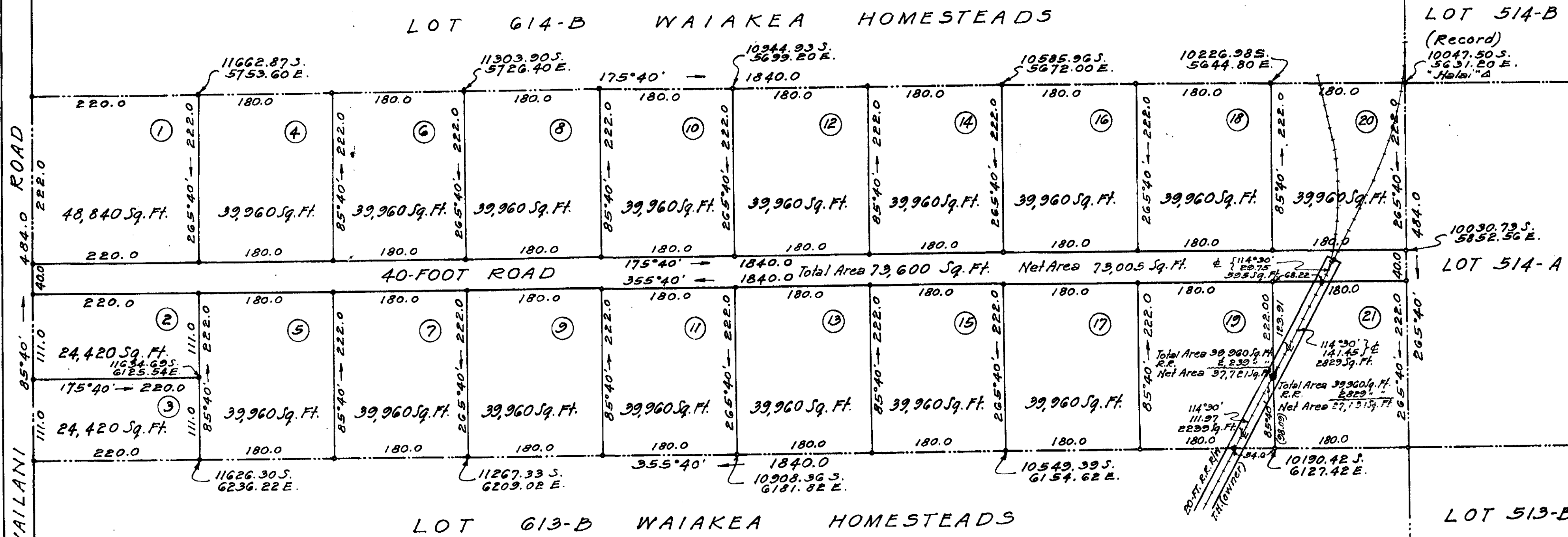


True North  
Scale: 1 in. = 100 Ft.



SUBDIVISION APPROVED  
By: *John L. Padgett*  
John L. Padgett  
Chief Engineer  
Public Works Department  
County of Hawaii Date:

NOTE:  
All Lot corners are marked  
with pipes  
Coordinate References  
are to "Halai" Trig. Station

SUBDIVISION OF LOT 614-A  
WAIAKEA HOMESTEADS  
Into Lots 1 to 21 (Inclusive)  
WAIAKEA, SOUTH HILO, HAWAII  
Scale: 1 Inch = 100 Feet  
Survey and plan by Chas. L. Murray, March, 1947