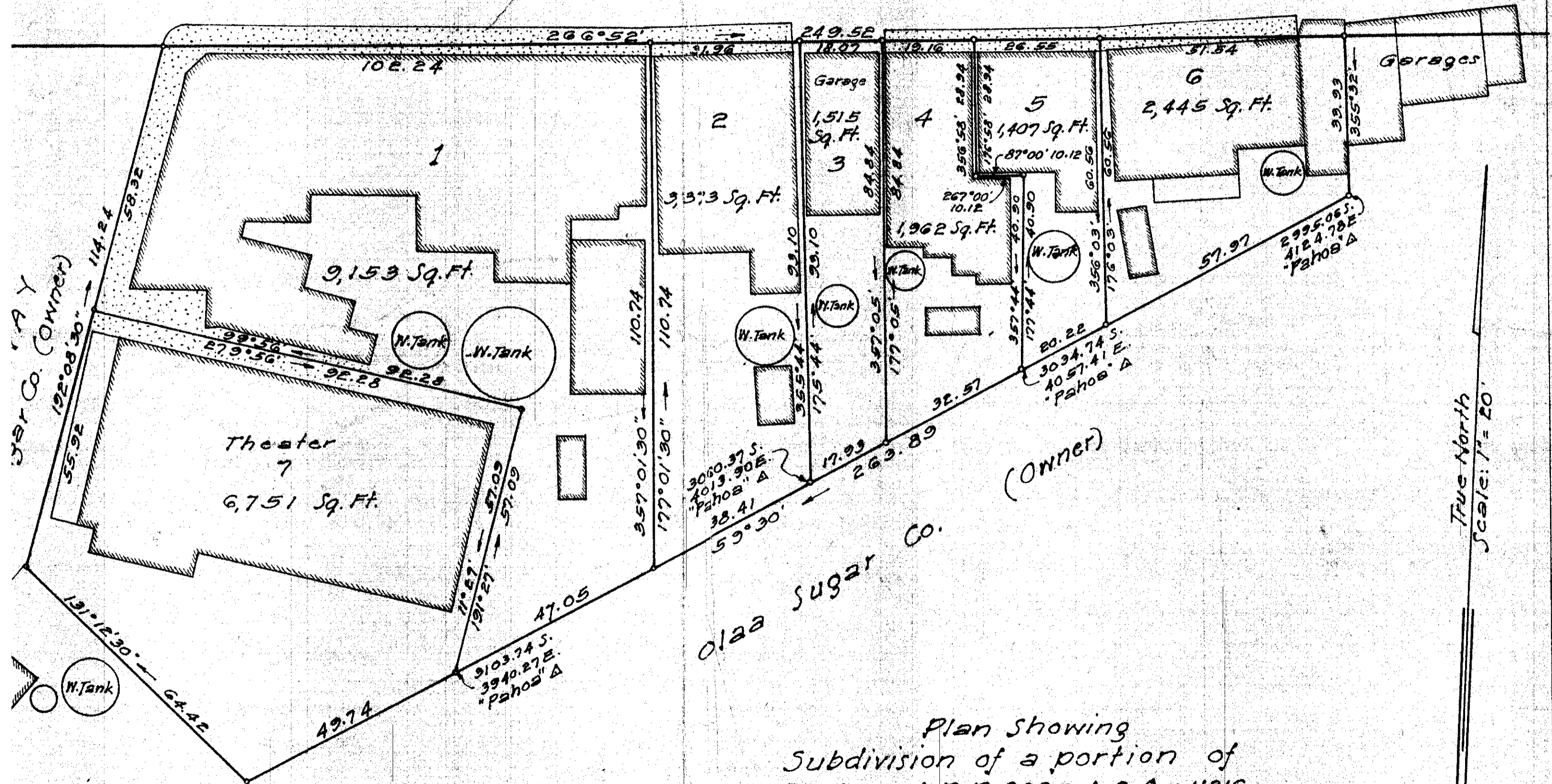


P A H O A R O A D  
(Government Main Road)

To Kalapana & Kapoho →



Olaa Sugar Co. (Owner)

Plan showing  
Subdivision of a portion of  
Part 2 of R.P. 8095, L.C. AW. 11216,  
Apana 40 to Kekauonohi  
Waiakahiula, Puna, Hawaii  
Scale: 1 in. = 20 Ft.  
Survey & plan by John N. Smith  
January - 1948

True North  
Scale: 1" = 20'

APPROVED:  
L. Padgett  
of Engineer  
of Public Works  
nty of Hawaii  
January 19, 1948