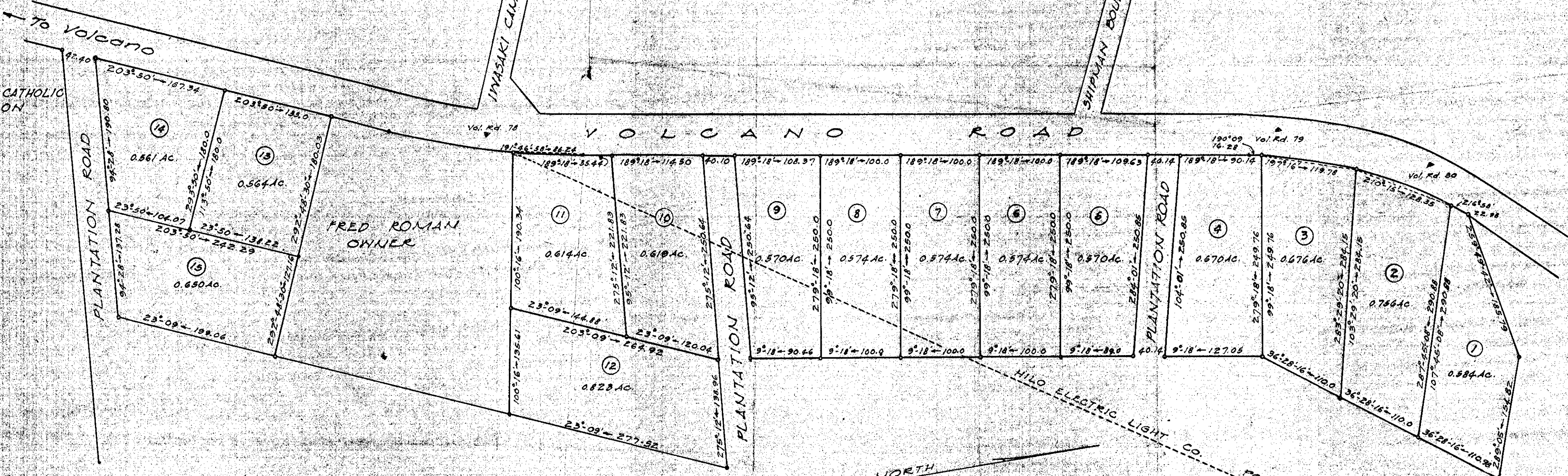


ROMAN CATHOLIC MISSION



FIELD J-3

PROPOSED HOUSE LOTS  
AT 10 MILES OLAA, DISTRICT OF PUNA  
COUNTY & TERRITORY OF HAWAII

TAX KEY:

THIRD DIVISION - ZONE 1, SEC. 7, PLAT 17, PARCEL 1

APPROVED

E. G. Wong  
COUNTY ENGINEER

SUBMITTED BY  
OLAA SUGAR CO., LIMITED  
JUNE 10, 1946