

GRANT

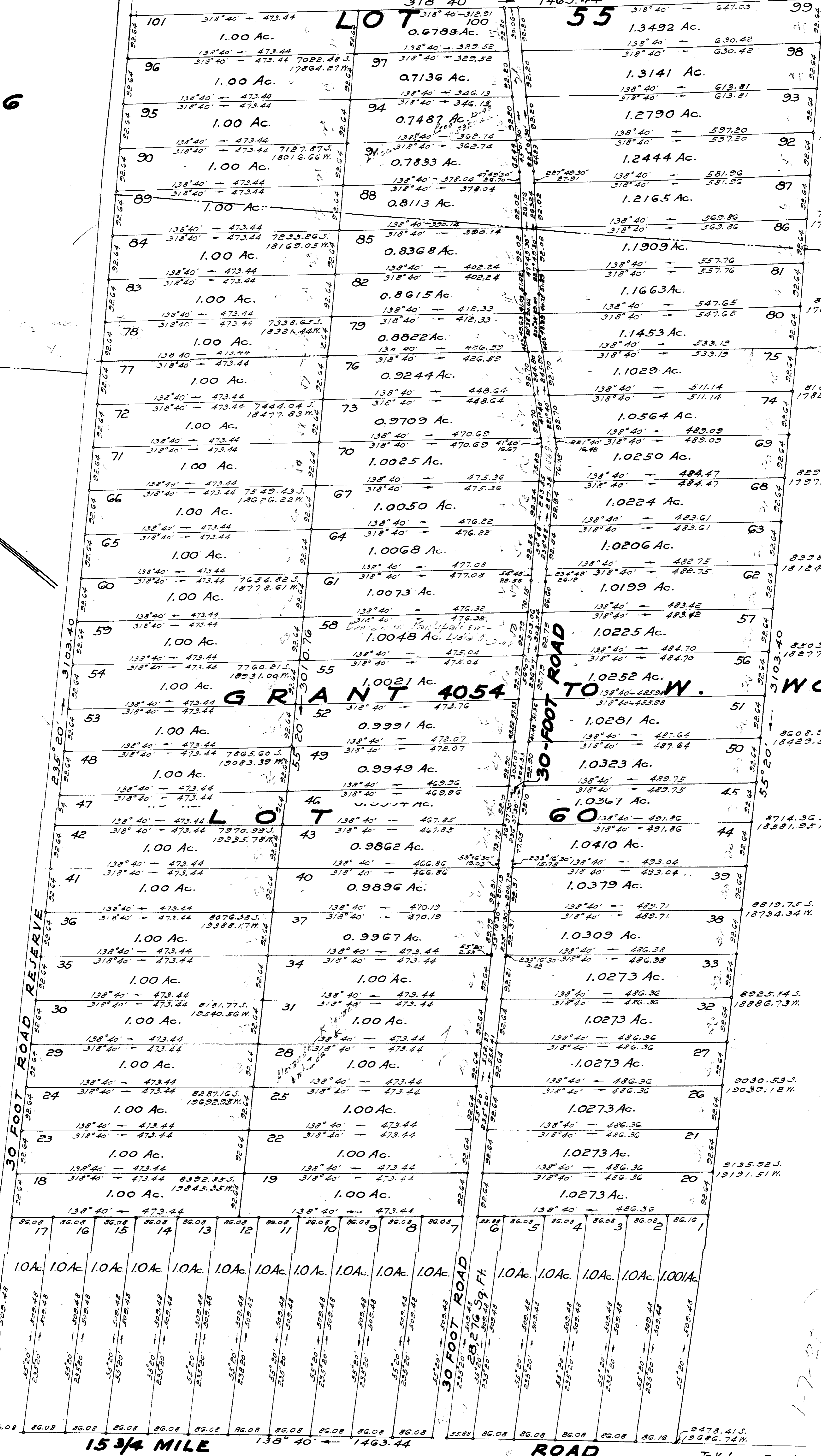
LOT 56

LOT 55

LOT 54

LOT 61

True North
Scale 1" = 100'



15 3/4 MILE

ROAD

To Volcano Road

MAUNALANI LOTS

SUBDIVISION OF A PORTION OF GRANT 4054 TO W. WOLTERS
AND A PORTION OF GRANT 4159 TO Mrs. L. M. STAPLES

OLAA RESERVATION LOTS

OLAA, PUNA, HAWAII

Scale 1 in. = 100 Ft.

Survey & plan by John N. Smith
Coord. referred to OLA A

SUBDIVISION APPROVED
By: E. L. Wung, Chief Engineer
Dept. of Public Works
County of Hawaii - Dec. 1946