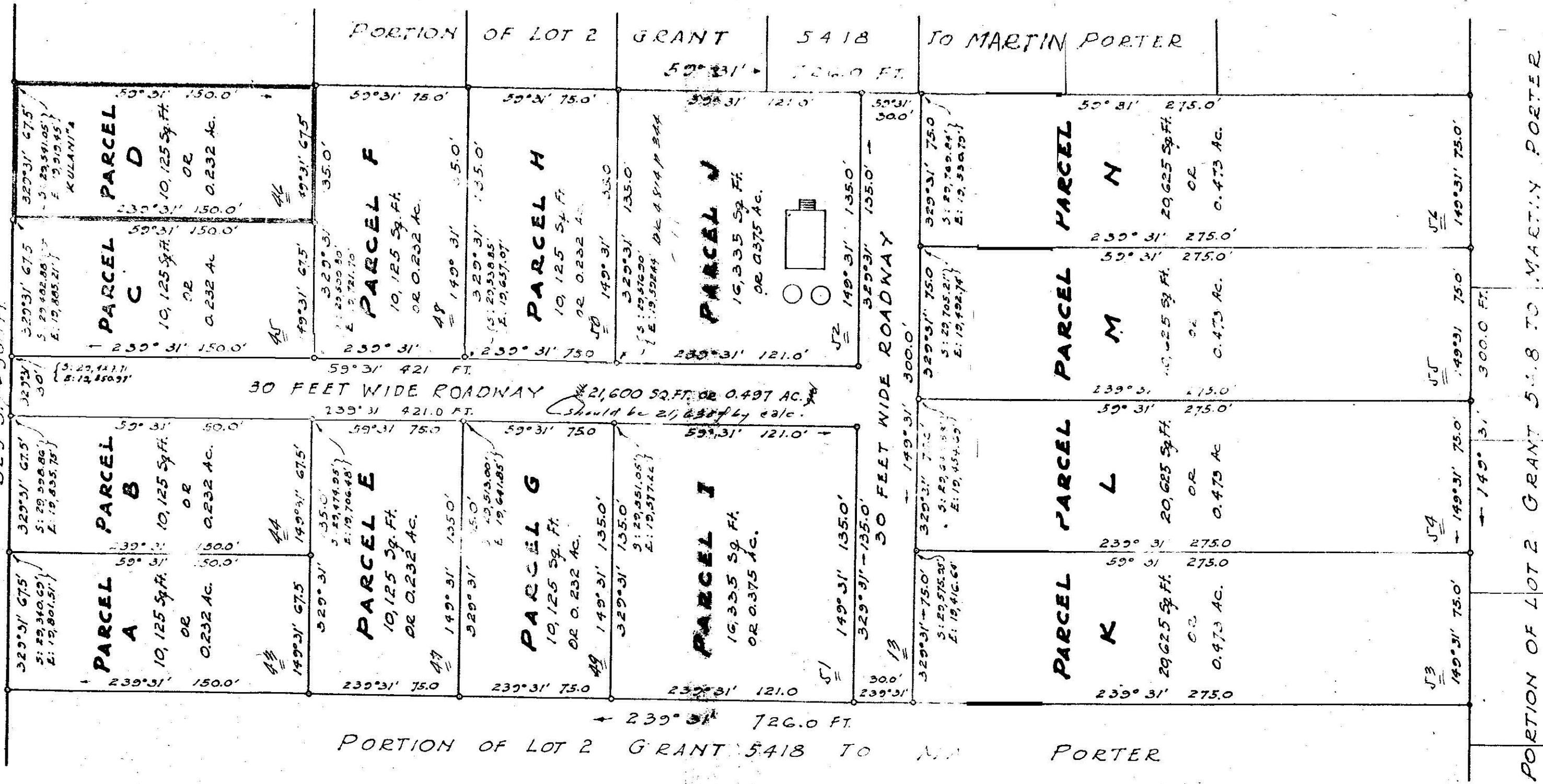


**H A U N A N I R O A D**

329°31' 300.0 FT

0.85 MILE TO VOLCANO ROAD



PORTION OF LOT 2 GRANT 5418 TO MARTIN PORTER

Total Lots Area: 217,770.4 or 4.999 Ac.

**SUBDIVISION OF A PORTION OF LOT 2 GRANT 5418 TO MARTIN PORTER INTO PARCELS A, B, C, D, E, F, G, H, I, J, K, L, M, & N**

SITUATED AT 29 MILES, OLAHA, PUNA, HAWAII, I.H.

SCALE: 1 IN. = 50 FT

MAY 4, 1946

SURVEY & PLAN BY:

*E. L. Wung*  
Registered Professional Surveyor

SUBDIVISION APPROVED BY:

*E. L. Wung*  
E. L. WUNG  
CHIEF ENGINEER  
COUNTY OF HAWAII

All corners marked with Galium Pipe  
All Coordinates referred to Government Survey Triangulation Station 'KULANI'