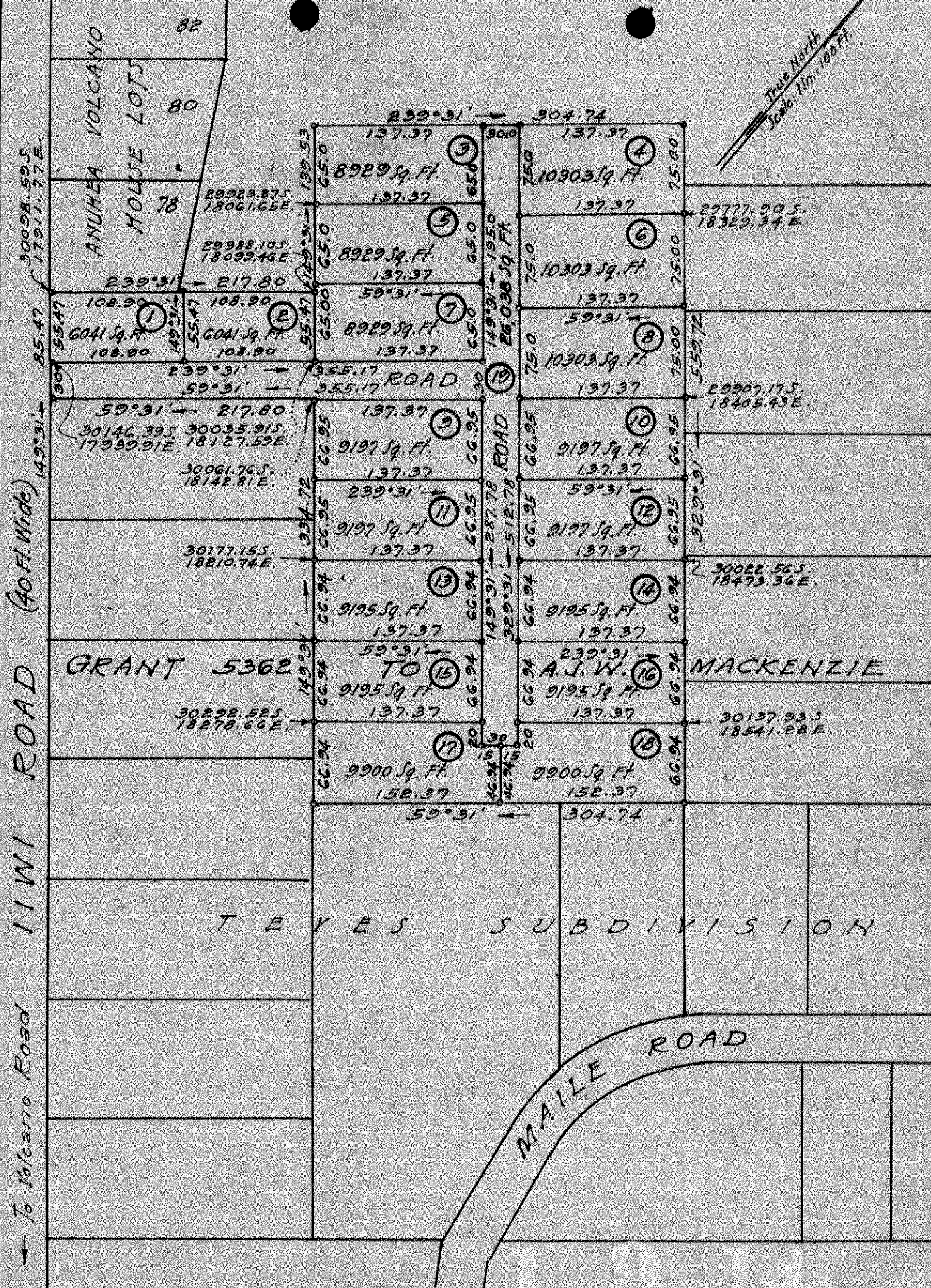


True North
Scale: 1 in. = 100 Ft.



Lots 1 to 19 (Inclusive)
 Subdivision of a portion of
 Grant 536 E to A. J. W. Mackenzie
 Oloa, Puna, Hawaii
 Scale: 1 in. = 100 Ft.

SUBDIVISION APPROVED:
 By: E. L. Wung
 Chief Engineer
 County of Hawaii
 Date: Feb. 1, 1946

By: Chas. L. Murray - January 31, 1946

Note: Coordinate Reference is to "Kulani" A