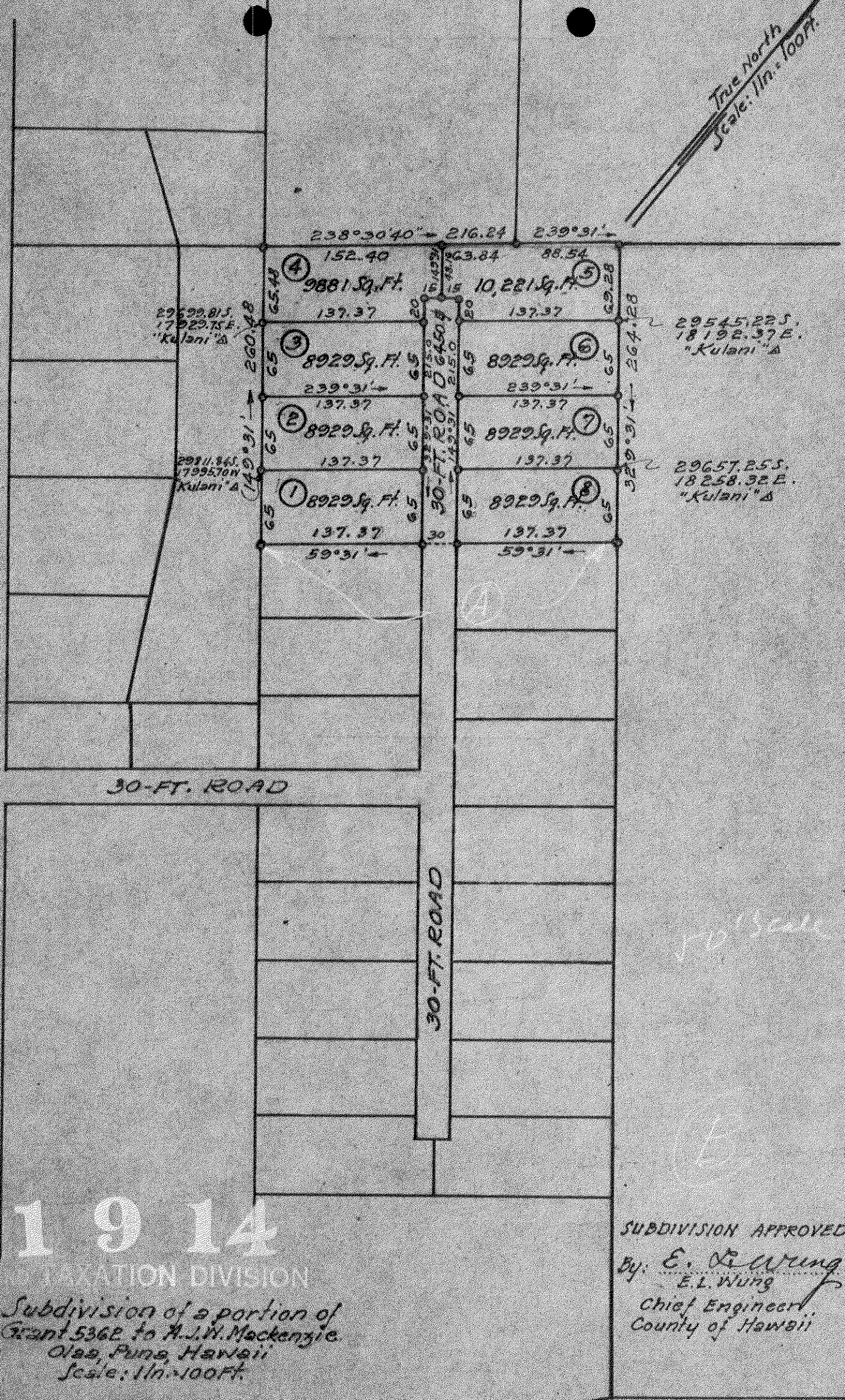


True North
Scale: 1/4" = 100 FT.

IIWI ROAD



29530.81 S.
17929.75 E.
"Kulani" A

29211.86 S.
17995.70 E.
"Kulani" A

29545.22 S.
18192.37 E.
"Kulani" A

29657.25 S.
18258.32 E.
"Kulani" A

1914

REGISTRATION DIVISION
Subdivision of a portion of
Grant 5362 to A. J. W. Mackenzie
Olae, Puna, Hawaii
Scale: 1/4" = 100 FT.

SUBDIVISION APPROVED
By: *E. L. Wung*
E. L. Wung
Chief Engineer,
County of Hawaii

MAILE ROAD