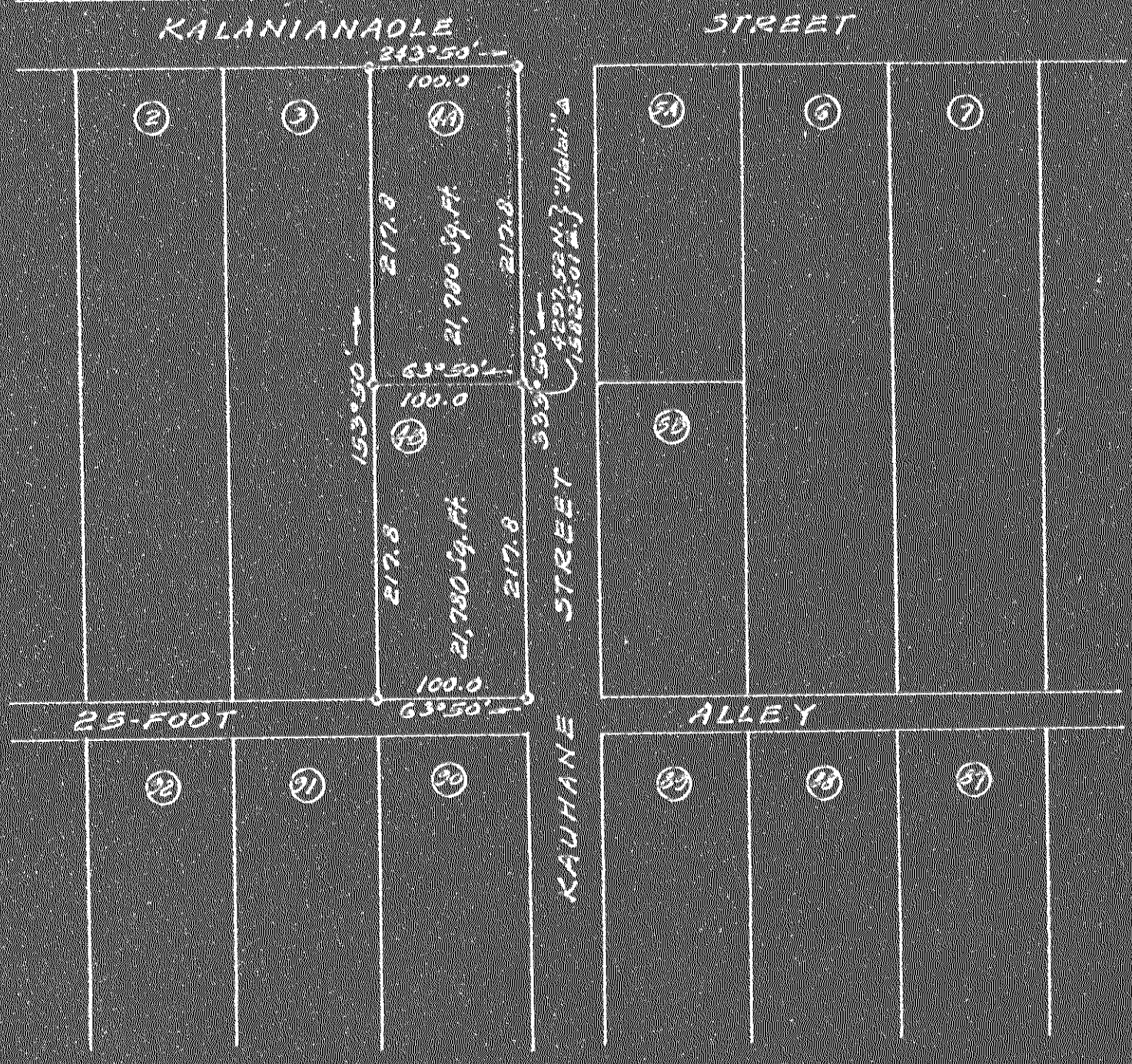


True North
Scale: 1 in. = 100 ft.



Subdivision of Lot 4
 Into Lots 4-A and 4-B
 Keaukaha Residence Lots
 Keaukaha, Waikeke, South Hilo, Hawaii
 Scale: 1 Inch = 100 Feet
 Survey and plan by Char. L. Murray
 February - 1948

Subdivision Approved
 By: *John L. Padgett*
 John L. Padgett
 Chief County Engineer
 County of Hawaii
 February 27, 1948