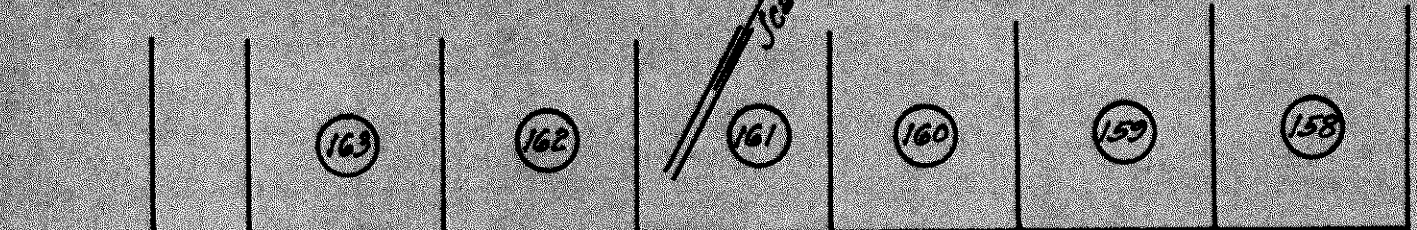
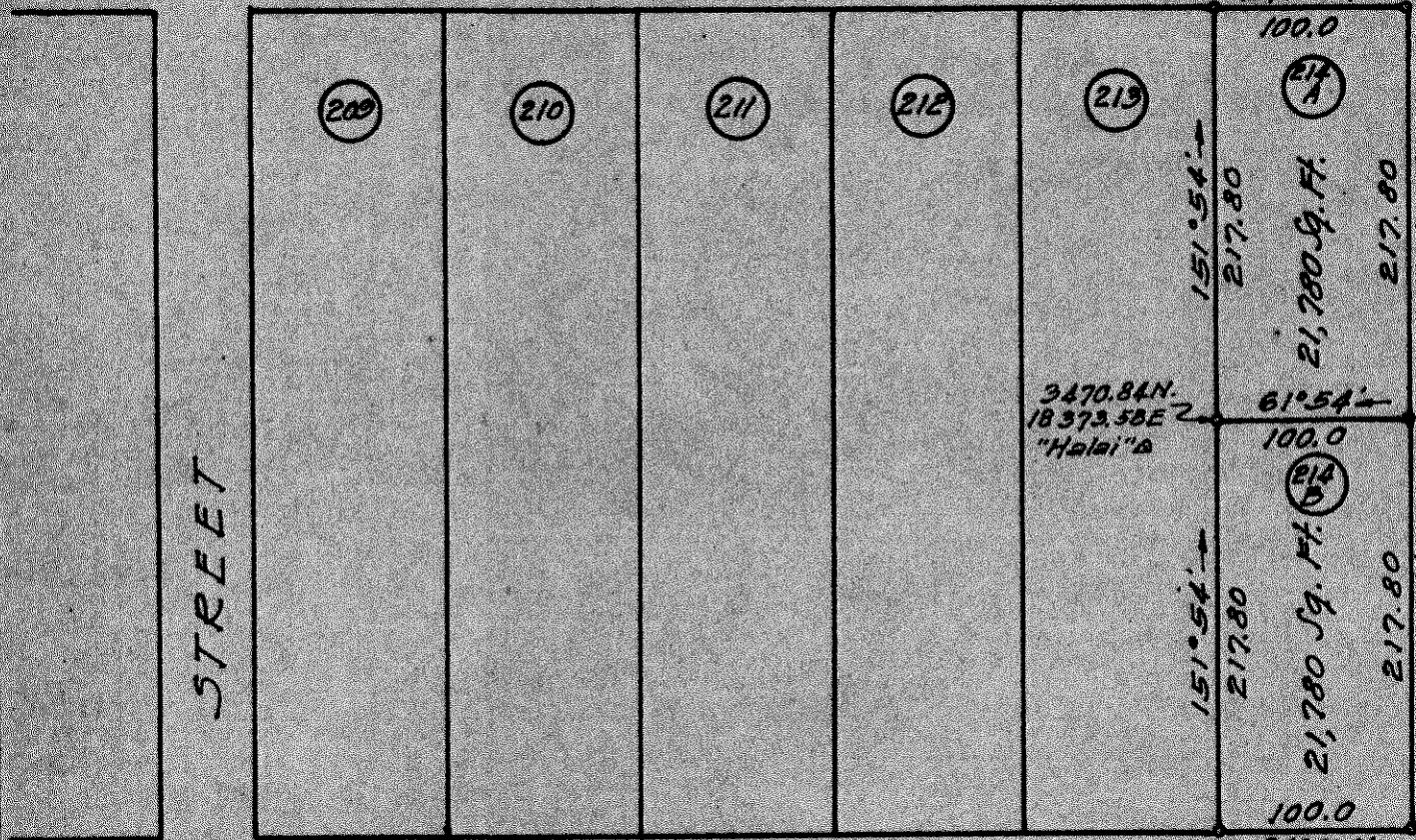


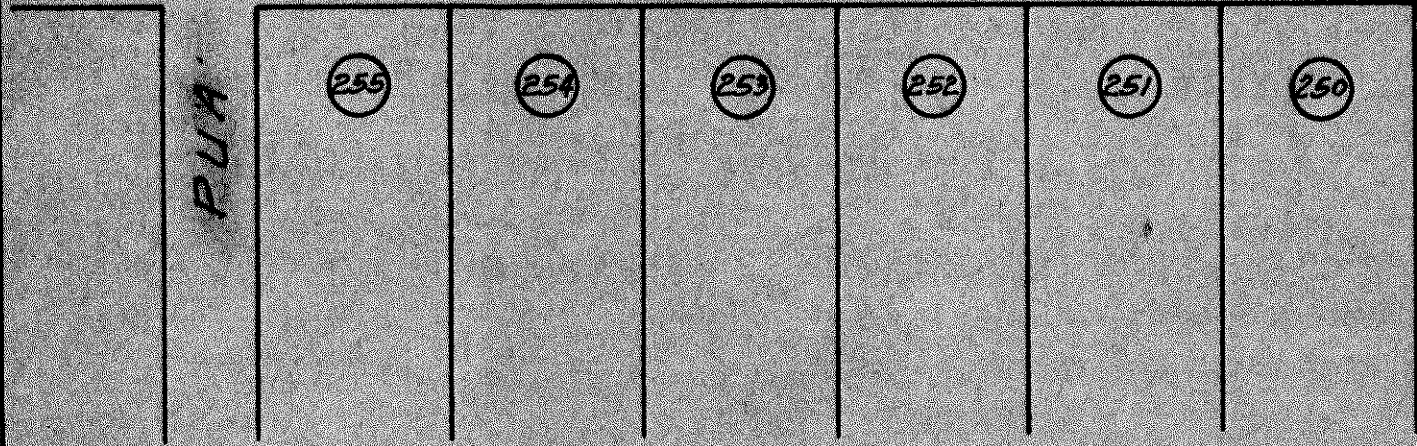
True North
Scale: 1/4" = 100 Ft.



TODD STREET



KING STREET



Subdivision of Lot 214
 Into Lots 214-A and 214-B
 Keaukaha Residence Lots
 Keaukaha, Waiakoa, South Hilo, Hawaii
 Scale: 1/4" = 100 Feet
 Survey and plan by Char. L. Murray
 April - 1947

Subdivision Approved:
 By: *John L. Faggett*
 John L. Faggett
 Chief County Engineer
 County of Hawaii
 Date: