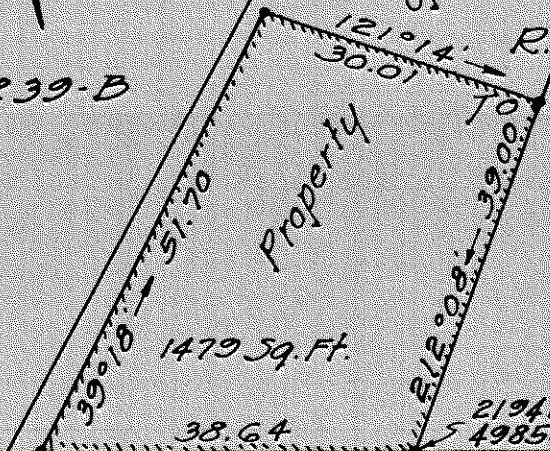


True North
Scale: 1 in. = 20 Ft.

L.C. Award 4239-B

of Wang Leong Do Association
L.C. Award 1106
R.P. 1149
to Haae



2194.10 N. } "Halai" Δ
4985.74 E. }

Kam. 5
Steel Plug in
concrete curb
2211.24 N.
4944.10 E.
"Halai" Δ

KAMEHAMEHA AVENUE

sidewalk

Lease
Portion of Wang Leong Do Association property
In L.C. Award 1106, R.P. 1149 to Haae
Located on the South side of Kamehameha Avenue
Kukuau 2, Hilo City, South Hilo, Hawaii
Scale: 1 Inch = 20 Feet
Survey conducted by Chester Murray, March 1947

Subdivision Approved
By *John L. Padgett*
John L. Padgett
Chief Engr., Public Wks. Dept.
County of Hawaii