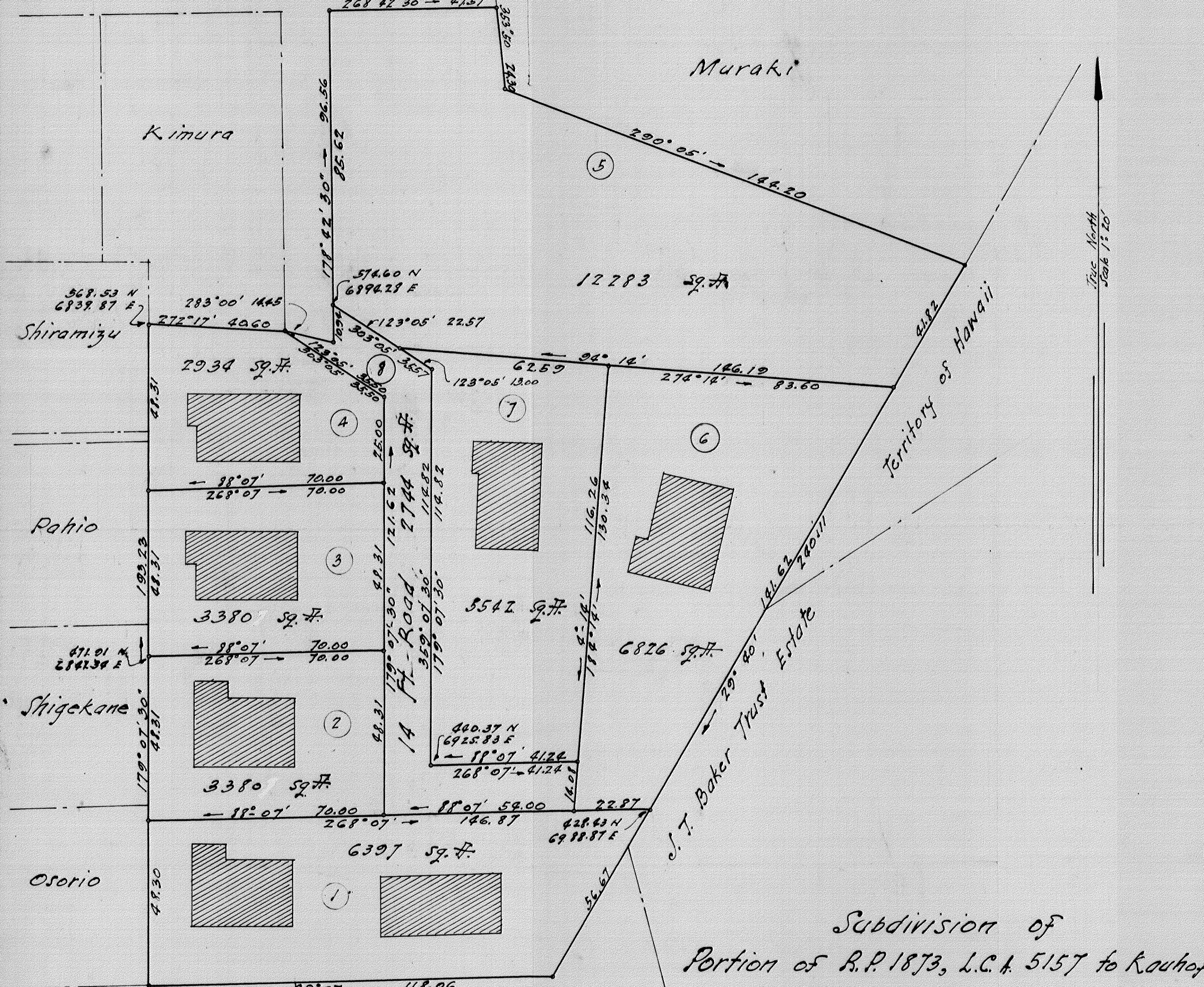


OHIA LANE



Subdivision of
 Portion of R.P. 1873, L.C.A. 5157 to Kouhōpe
 Waiakoa, Hilo, Hawaii
 Scale 1" = 20'

Subdivision Approved
 E. J. Wang
 Chief Engineer
 Dept. of Public Works

12/22/46

Surveyed Plan by M. Tsugawa

Notes: Coordinates referred to Adlai A

True North
 Scale 1" = 20'