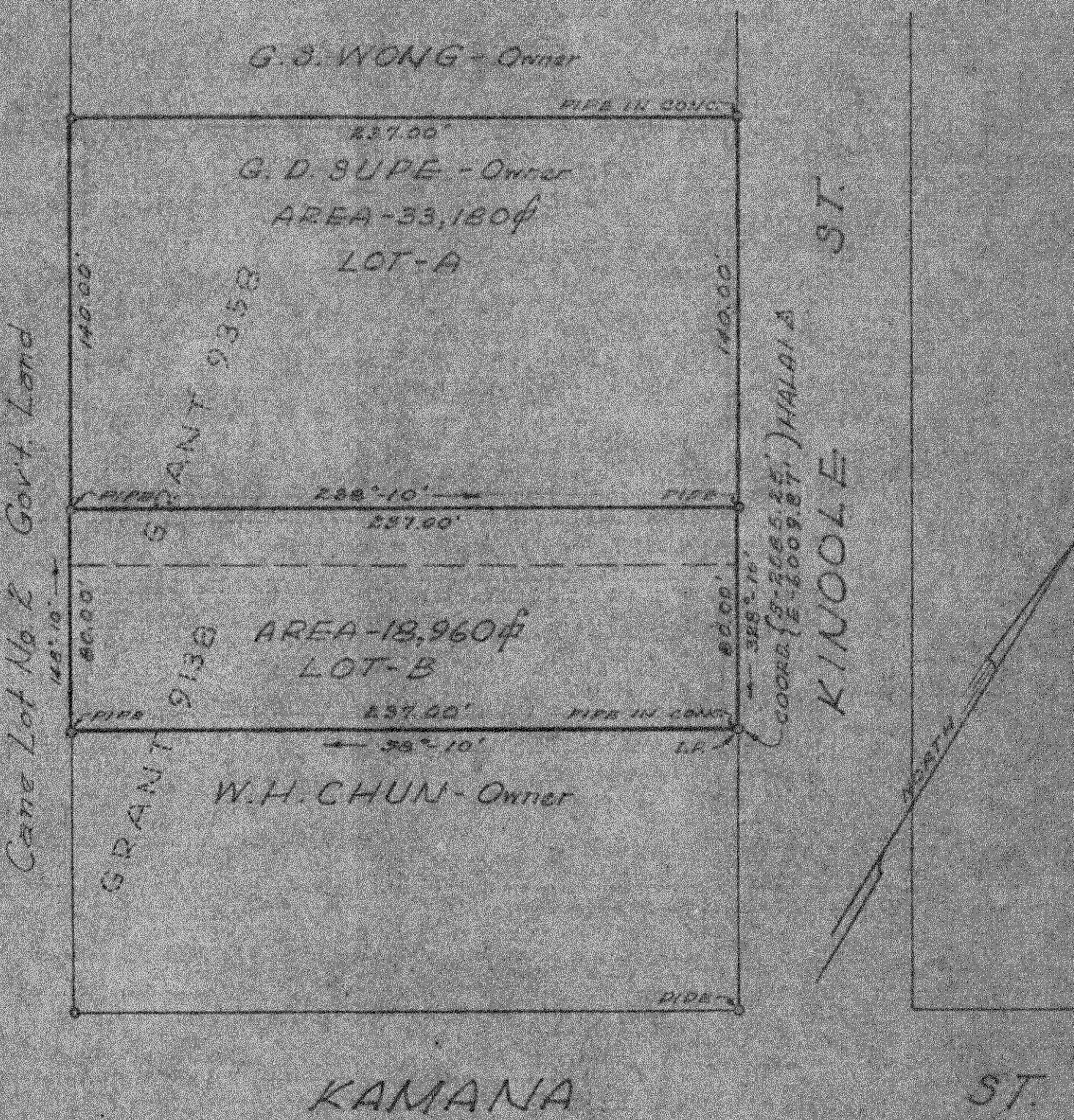


PLAN SHOWING A SUBDIVISION OF GUS SUPE'S LOT, TAX KEY -2-2-22-22,  
 BEING A PORTION OF GR. 9138 AND GR. 9358, WAIAKEA HOUSELOTS, SECOND SERIES  
 LAND OF WAIAKEA, SOUTH HILLO, HAWAII, TERRITORY OF HAWAII.

Scale ----1" = 50 feet.



Approved by *[Signature]*  
 Chief Eng'r. D. E. W.  
 County of Hawaii.  
 3/31/47

Surveyed by *[Signature]*  
 Land Surveyor  
 License No. 46

Hilo, Hawaii, T. H. March 25, 1947.