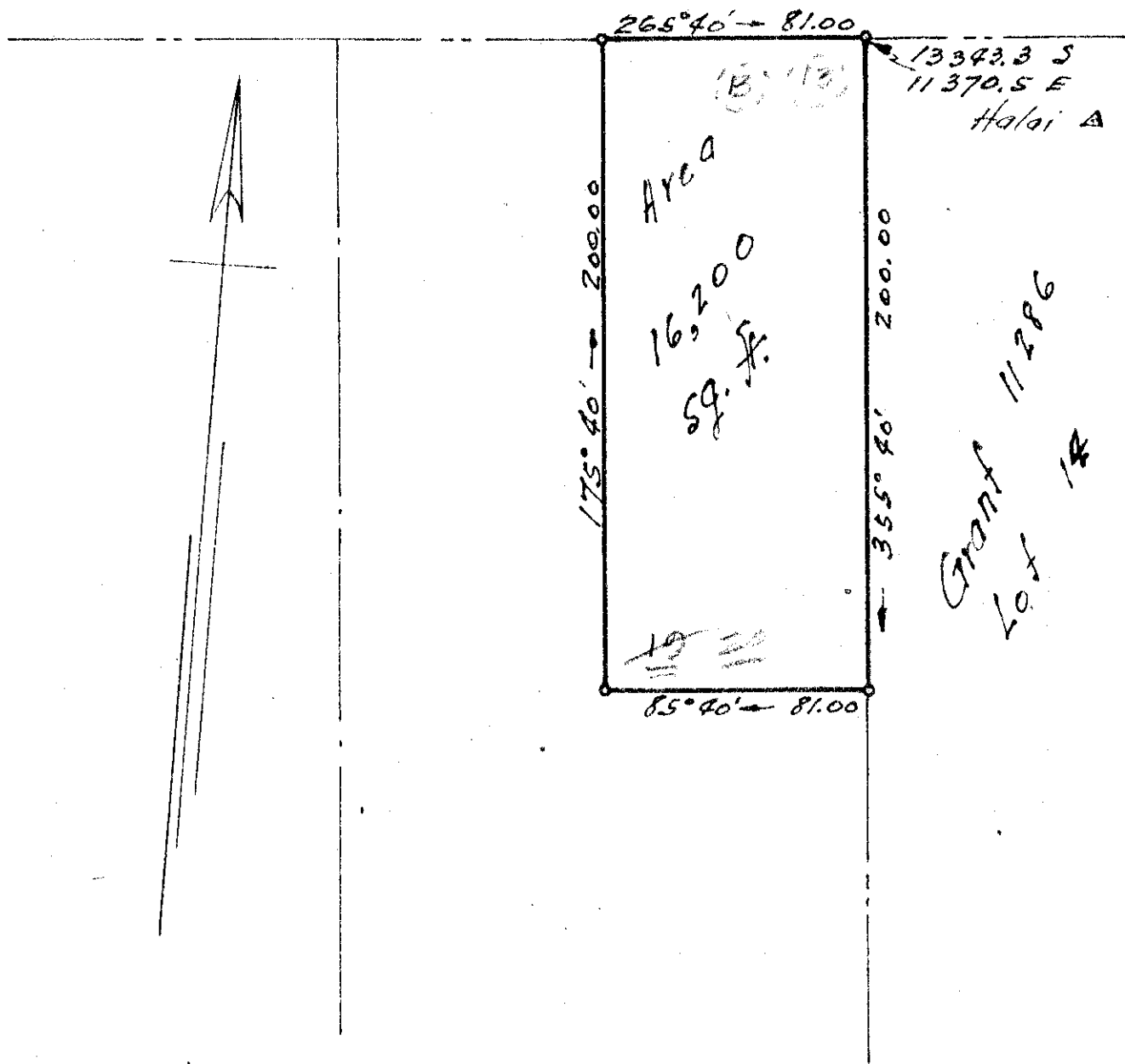


To Kilauea St.

Palai Street



Map Showing
 Portion of Land Patent 11537
 Lot 13, Block 801, Waiakea Homesteads, 1st Series
 South Hilo, Hawaii
 Scale 1" = 50'

Approved by
 John P. [Signature]
 S. L. Radgett
 Chief Eng. Dept. of Public Works
 5/14/48

J. H. [Signature]
~~2-2-48-19~~
 2-2-55-20
 M. Tsugawa 5/2/48