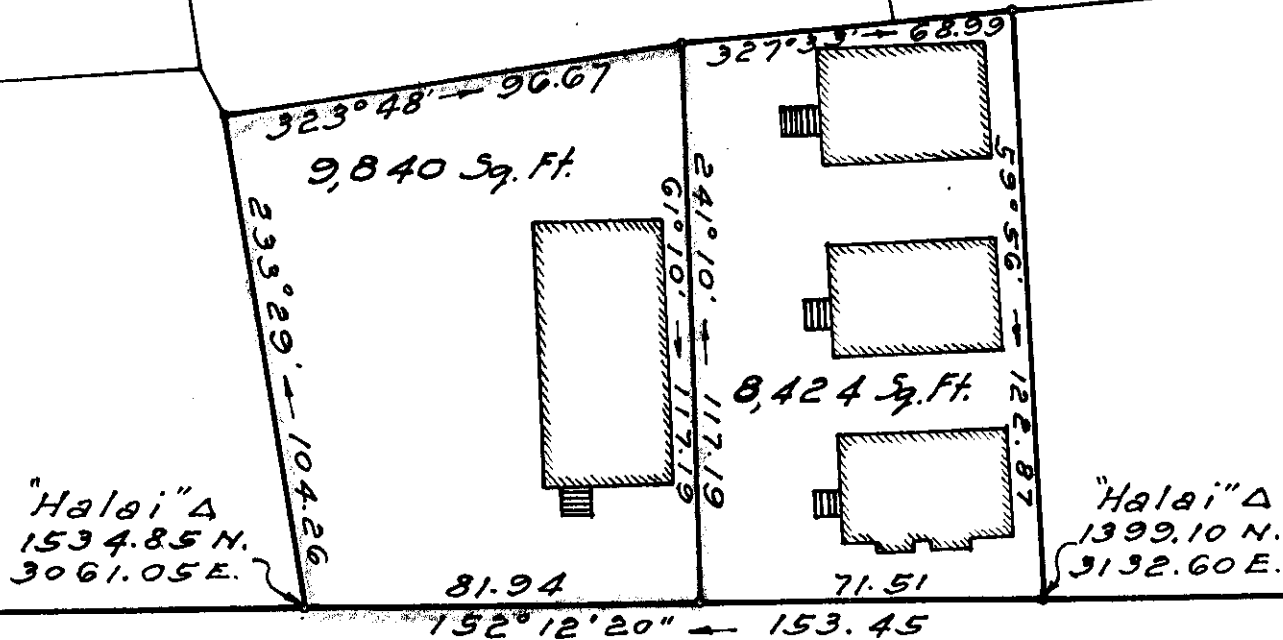


LINCOLN PARK  
Executive Order 128

True North  
Scale 1" = 40'

P.C. Beamer  
(Owner)



40.0  
ULULANI

STREET

Plan Showing  
SUBDIVISION OF A PORTION OF  
GRANT 252 TO B. PITMAN  
Situated on the Northeast side of Ululani St.  
Ponahawai, South Hilo, Hawaii  
Scale 1 in. = 40 Ft.

SUBDIVISION APPROVED:  
By *John L. Padgett*  
John L. Padgett  
Chief Engineer  
Dept. of Public Works  
June 19, 1947

Survey & plan by John N. Smith