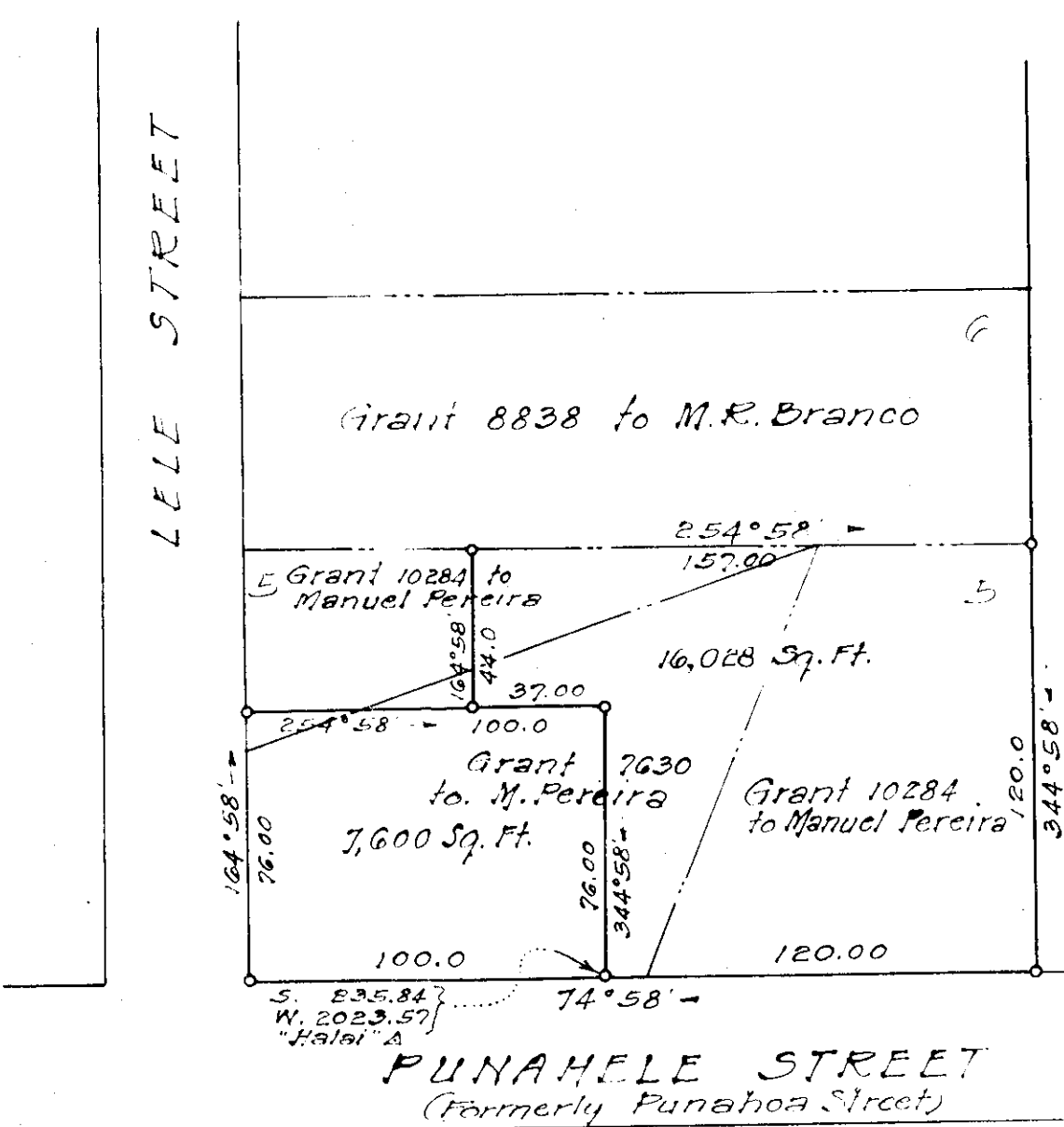


True North
Scale: 1 in. = 50 Ft.



Grant 9120
to C. Pereira

Subdivision of Portions of
Grant 10284 to Manuel Pereira
And Grant 7630 to M. Pereira
Pihionua, South Hilo, Hawaii
Scale: 1 in. = 50 Ft.

Subdivision Approved
By: *[Signature]*
John L. Padgett
Chief Engineer
Public Works Dept
County of Hawaii
January 12, 1948

Plan by Chas. L. Murray, Jan. 12, 1948