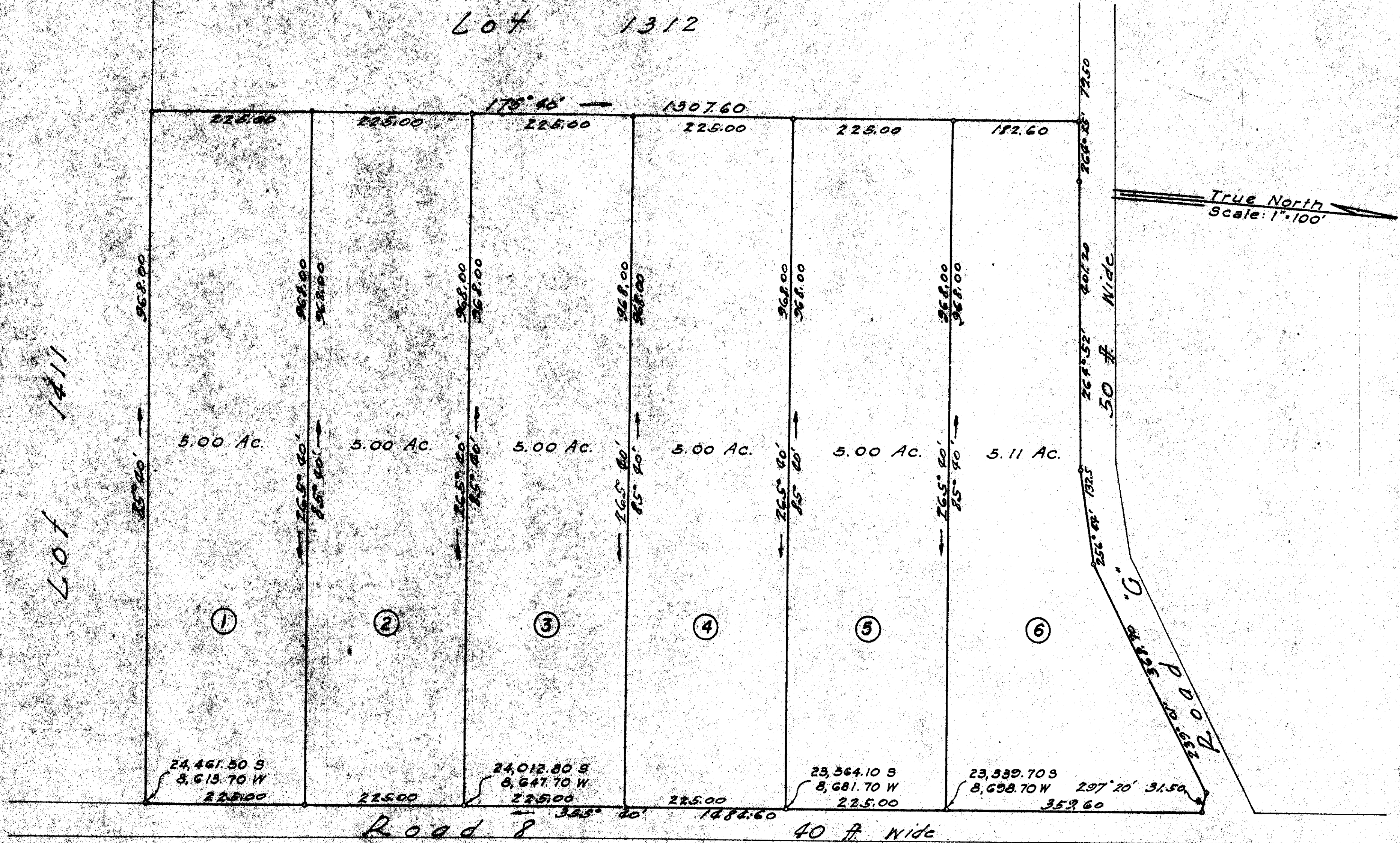


Lot 1312

Lot 1311



Subdivision of Lot 1311
 Waiakea Homesteads 2nd Series
 Waiakea - South Hilo - Hawaii
 Scale 1" = 100'

Subdivision Approved
 John L. Pidgeon
 Civil Engineer
 Dept of Public Works
 County of Hawaii

Coord. Referred to Haka A

Survey and Plan by Masaru Tsugawa

3/1/47