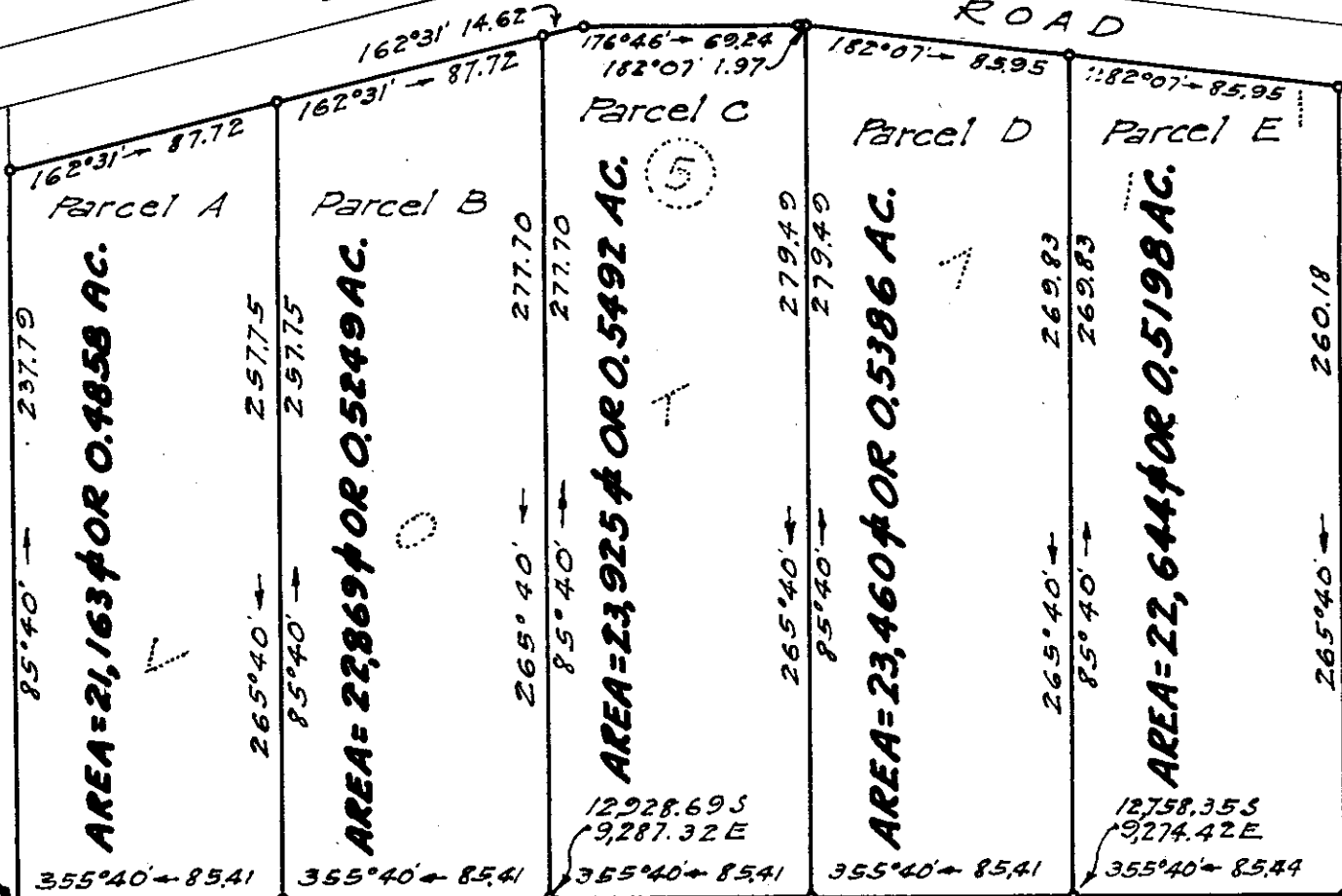


(8)

(6)

20 FT. RAILROAD RIGHT-OF-WAY
20-FOOT ROAD



13,099.03 S
9,300.22 E

12,228.69 S
9,287.32 E

12,758.35 S
9,274.42 E

(2) BLOCK 703 (5)

Note: Coordinates Referred to Halai "A"

PLAN SHOWING
SUBDIVISION OF A PORTION OF LOT 711-A
WAIAKEA HOMESTEADS SOUTH HILO, HAWAII T.H.

Scale: 1 inch = 60 Ft.

Dec. 13, 1946

Subdivision Approved
By: E. C. Wong
Chief Engineer
County of Hawaii