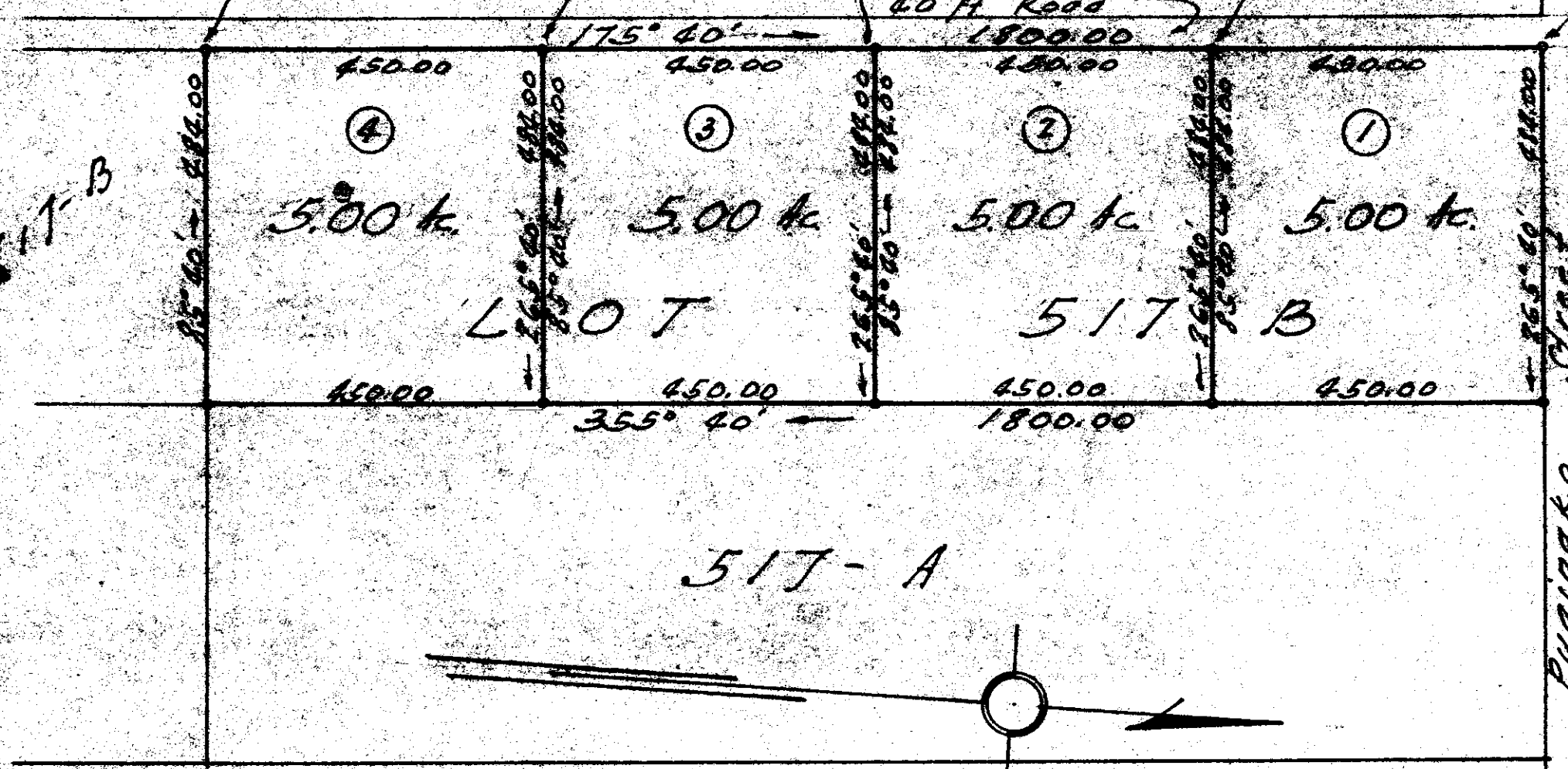


1030.3 S Halai A
2253.0 E
9854.5 Halai A
2219.0 E
9405.9 S Halai A
2185.0 E
1957.5 S Halai A
2181.0 E



8508.5 S
2117.0 E
Halai A

Subdivision of
 Lot 517-B Grant 9040
 Waiakea Homestead 1st Series
 Waiakea, South Hilo, Hawaii
 Scale 1" = 200'

Subdivision approved
 by the Board of Public Works
 Chief Eng. Dept. of Public Works

By Masaru Tsugawa 2/18/47