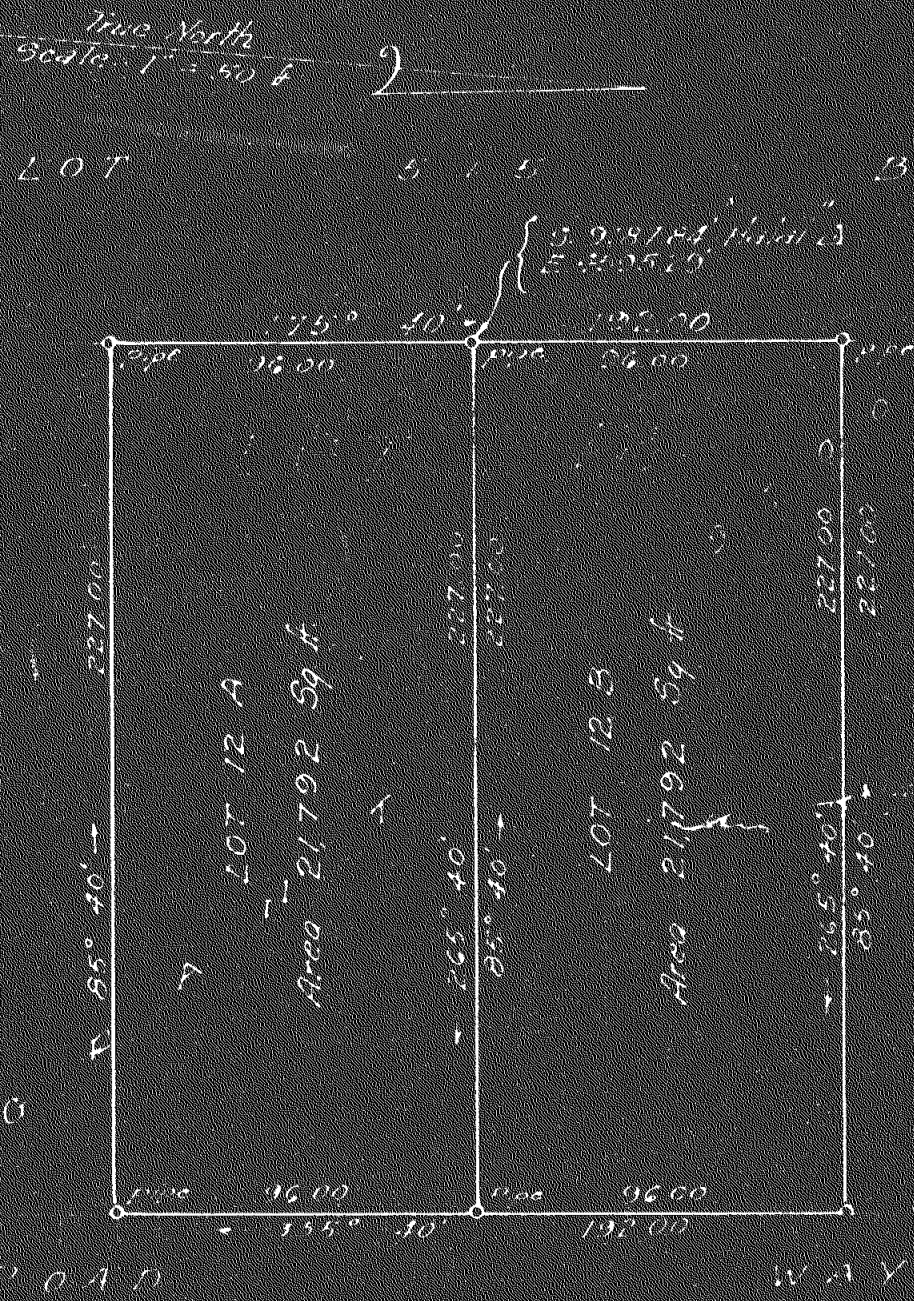


SUBDIVISION OF LOT 12 OF PORTION OF
GRANT 9700, HOOLUANA TRACT TO LOTS
12 A & 12 B. WAIAKEA, SOUTH HILO, HAWAII, TH.

Scale: - 1 inch = 50' Survey & Plan by: E. S. Young 1/15/47

March, 1947

Subdivision approved
By *[Signature]*
City Engineer
County of Hawaii



LOT 13 LOT 11 LOT 9
H O O L U A N A W A I A K E A