

SUBDIVISION OF LOT 10 OF PORTION OF
 GRANT 9700 HOOLUANA TRACT TO LOTS
 10 A & 10 B WAIKAE, SOUTH HILO, HAWAII, TH

Scale: 1 inch = 50' Survey & Plan by E. K. Knight 2/3/47

March 1947

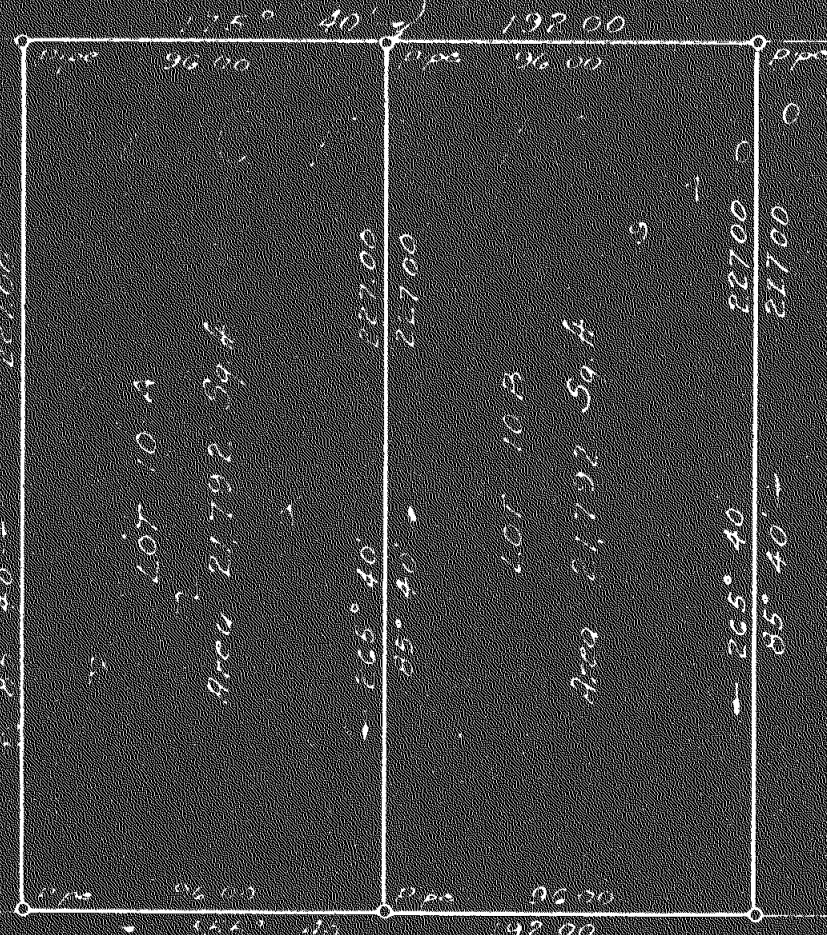
Subdivision Approved
 by *[Signature]*
 Chief Engineer
 County of Hawaii

See North
 page 11-50

2

LOT 5 1 5 B

9 8906 39' Halo
 4 4580 79'



ROAD WAY

LOT 13 LOT 11 LOT 9
 HOOLUANA TRACT