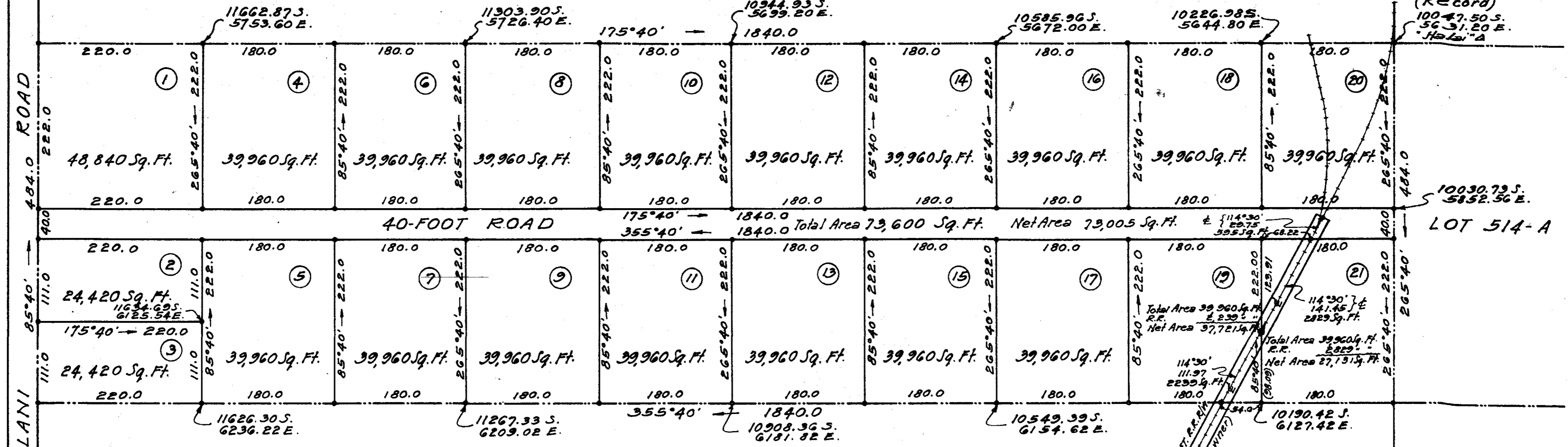


True North
Scale: 1 in. = 100 Ft.

LOT 614-B WAIAKEA HOMESTEADS

LOT 514-B



KAWAILANI ROAD

LOT 613-B WAIAKEA HOMESTEADS

LOT 513-B

SUBDIVISION APPROVED
By: *John L. Padgett*
John L. Padgett
Chief Engineer
Public Works Department
County of Hawaii Date:

NOTE:
All Lot corners are marked
with pipes
Coordinate References
are to "Halai" Trig. Station

SUBDIVISION OF LOT 614-A
WAIAKEA HOMESTEADS
Into Lots 1 to 21 (Inclusive)
WAIAKEA, SOUTH HILO, HAWAII
Scale: 1 Inch = 100 Feet
Survey and plan by Chas. L. Murray, March, 1947