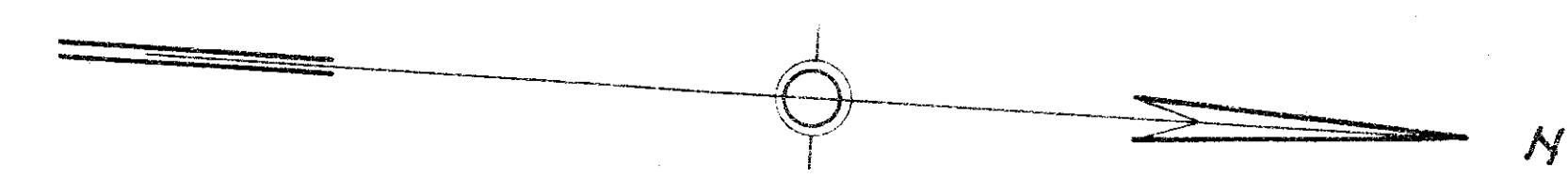


GRANT 9781

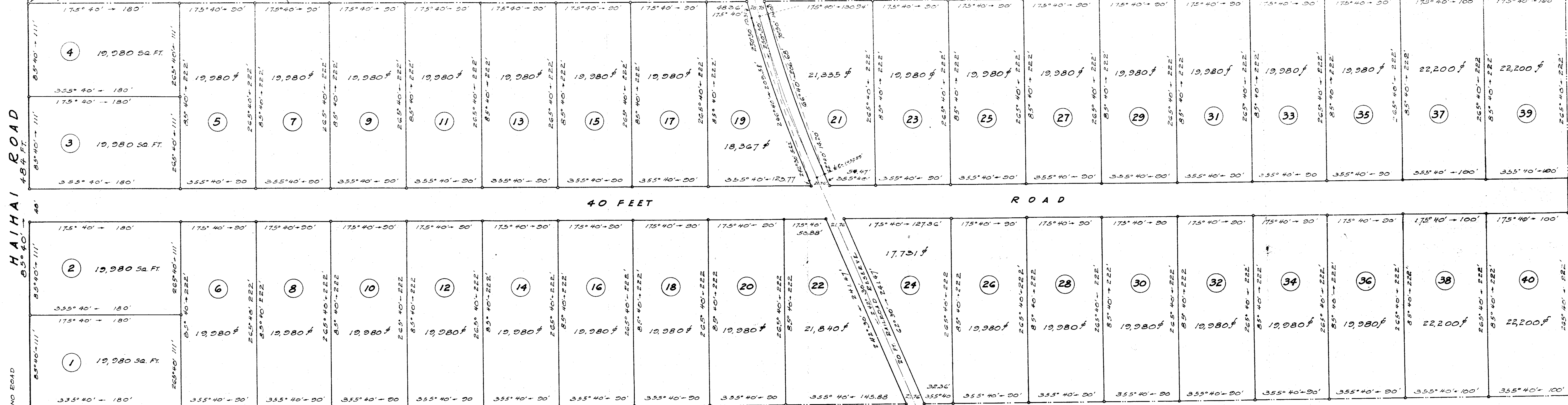
175° 40' - 1840 FT.

± CURVE DATA

D = 4°
R = 1432.29 FT.
T = 102.34 FT.
L = 3.8 FT.



Elev. HALAI GOV'T TRIG STA
S: 15,588.42'
E: 5,565.60'
1/2" PIPE (Spike)



HAIHAI ROAD
48.4 FT.
85° 40' - 111'

TO CITY & VOLCANO ROAD
85° 40' - 111'

40 FEET

ROAD

48.4 FT.
85° 40' - 111'

GRANT 1111

355° 40' - 1840 FT.

GRANT 8907

I WALANI HEIGHTS SUBDIVISION

BEING ALL OF GRANT 9835 TO A. BAPTISTE SR.
WAIAKEA HOMESTEADS
CITY OF HILO,
HAWAII, T. H.

SCALE: 1 INCH = 50 FEET

AUGUST 1946

- (25) Denotes Lot Number
- Denotes corners marked with 1/2" pipe or spike in rock.

TAX MAP KEY 2-4-02

APPROVED *E. Leung*
CHIEF ENGINEER, COUNTY OF HAWAII

Y. Inaba
Y. INABA
SURVEYOR & MAKER OF PLAN