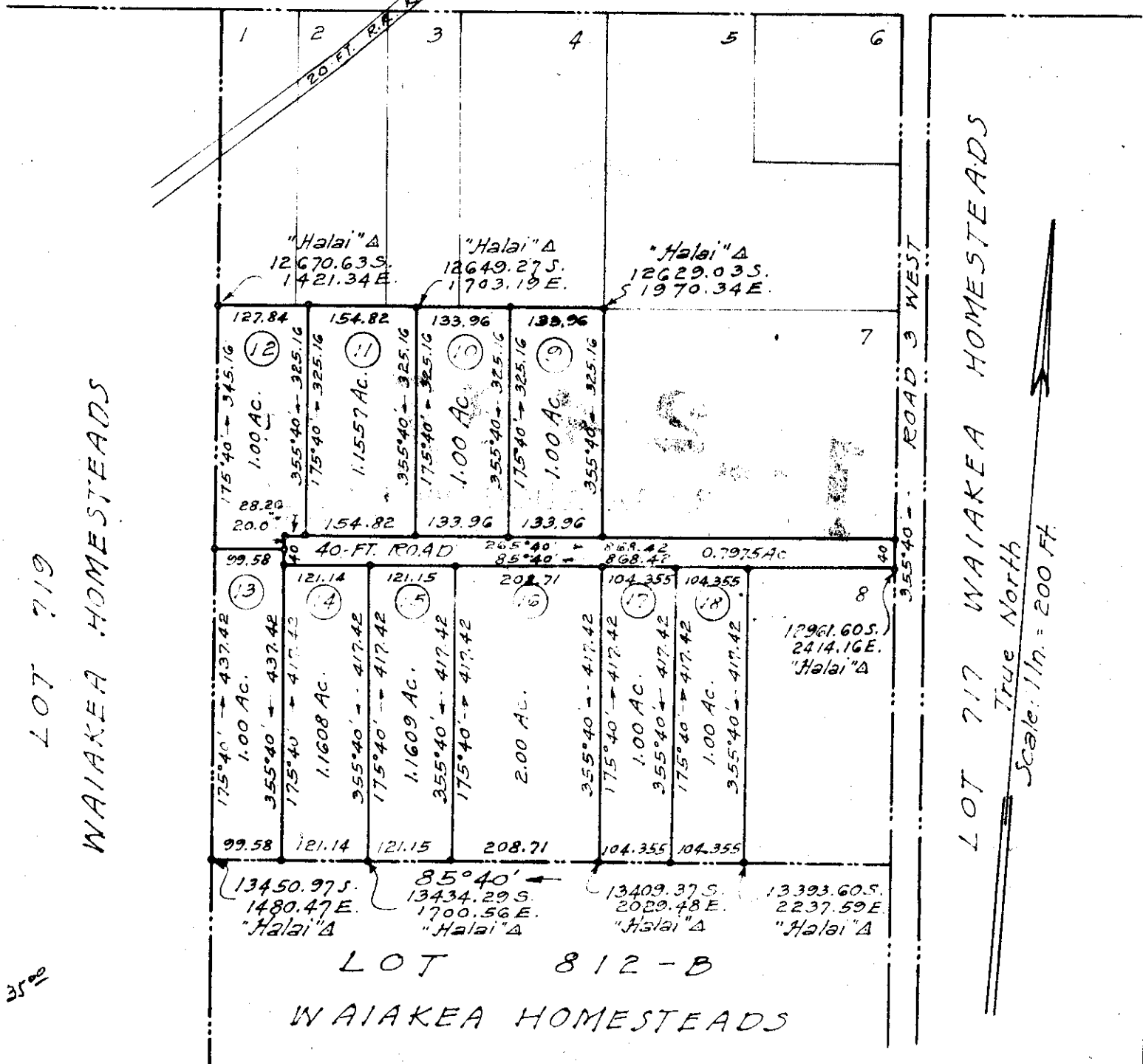


W A I A K E A H O M E S T E A D S

LOT 619

LOT 618

LOT 617



LOT 719
W A I A K E A H O M E S T E A D S

LOT 717 W A I A K E A H O M E S T E A D S
True North
Scale: 1 in. = 200 Ft.

LOT 812-B
W A I A K E A H O M E S T E A D S

Plan showing
Subdivision of portion of Lot 718
Waiakea Homesteads
Waiakea, South Hilo, Hawaii
Scale: 1 in. = 200 Ft.
Survey and plan by Chas. L. Murray
May - 1947

SUBDIVISION APPROVED
By *John L. Padgett*
John L. Padgett
Chief Engineer
Public Works Dept.
County of Hawaii
Date: 5/27/47