

True North  
Scale: 1 In. = 100 Ft.

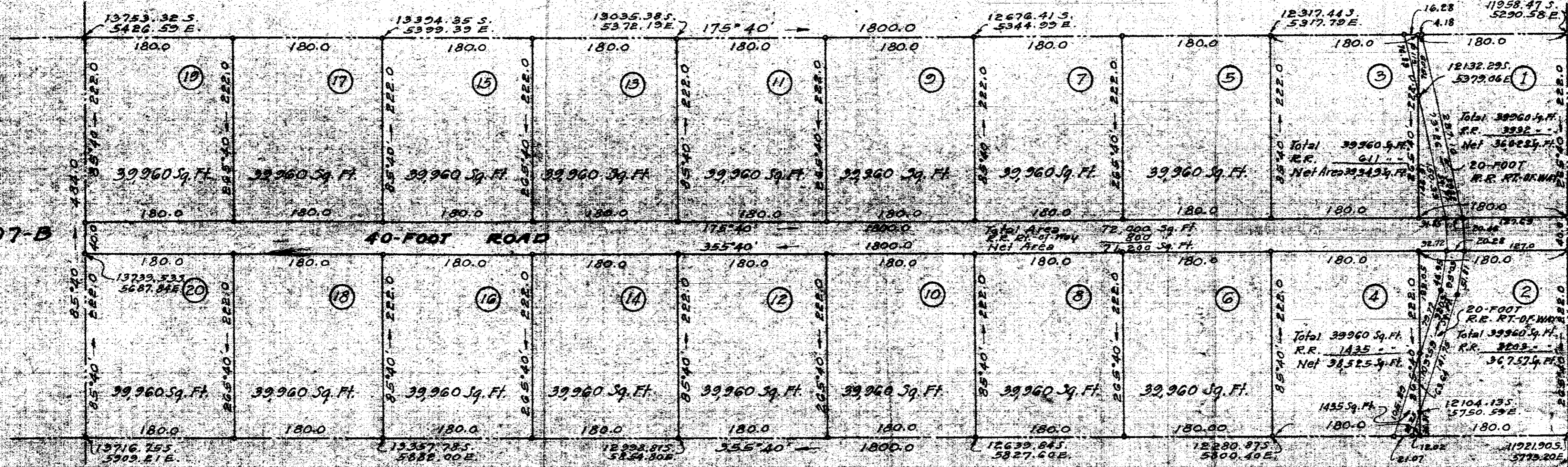
LOT 715-A WAIAKEA HOMESTEADS

LOT 808-A

LOT 807-B

LOT 807-A

LOT 714-A WAIAKEA HOMESTEADS



SUBDIVISION APPROVED

By: *John L. Padgett*  
John L. Padgett  
Chief Engineer  
Public Works Department  
County of Hawaii  
December 10, 1947

NOTE

All Lot Corners are marked  
with pipes  
Coordinate References  
are to "Halai" Trig. Station

SUBDIVISION OF LOT 714-B

WAIAKEA HOMESTEADS  
Into Lots 1 to 20 (Inclusive)  
WAIAKEA, SOUTH HILO, HAWAII  
Scale: 1 Inch = 100 Feet  
Survey and plan by Chas. L. Murray, Dec., 1947