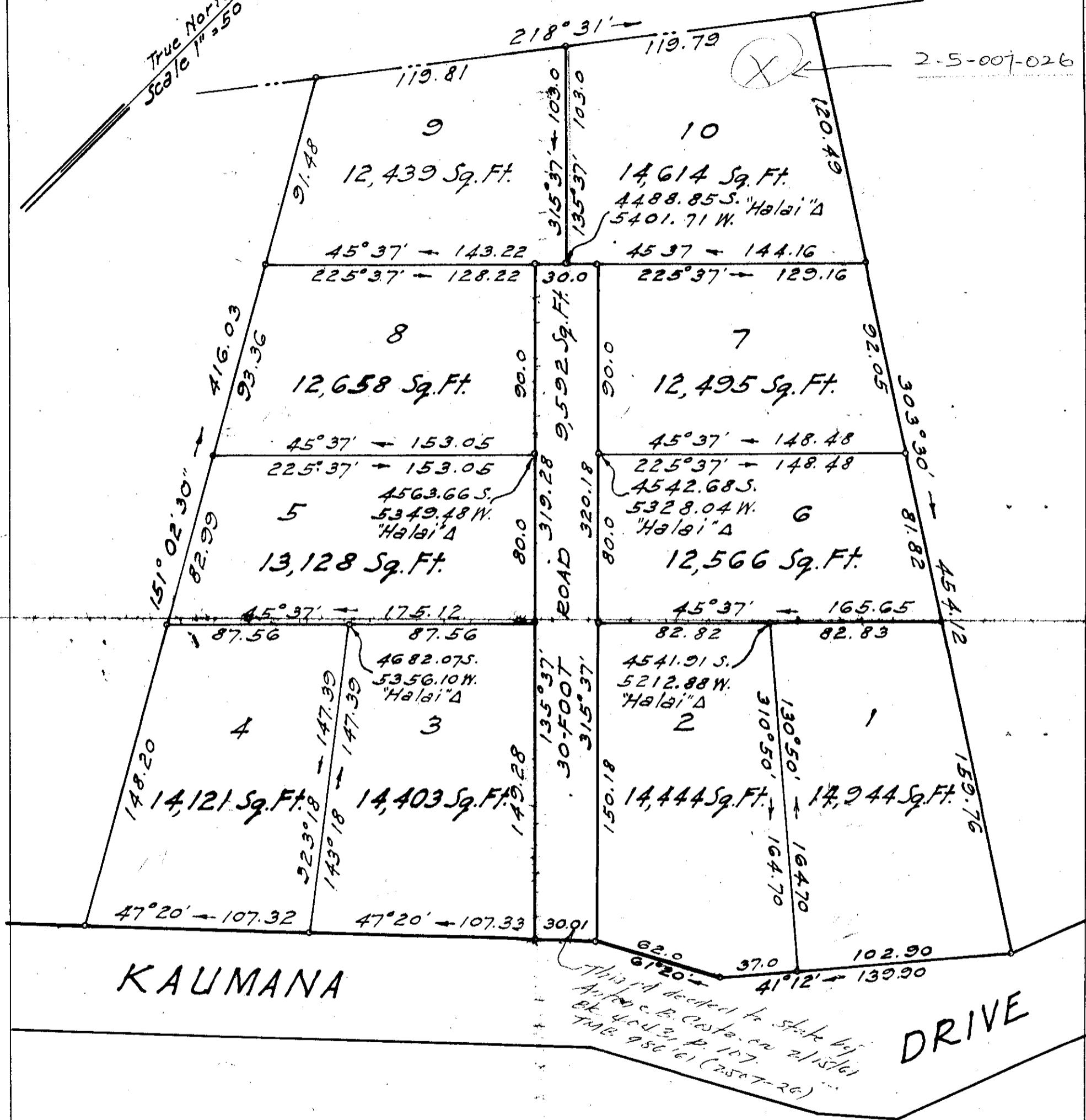


Center of Coast
 Point 411
 Hilo, Hawaii

True North
 Scale 1" = 50'

2-5-007-026



Plan Showing
 SUBDIVISION OF A PORTION OF
 LOT 2, GRANT 4673 TO JOAO VIERRA

Ponahawai Homesteads
 Ponahawai, South Hilo, Hawaii
 Scale 1 in. = 50 Ft.
 Survey & Plan by John N. Smith, Surveyor County of Hawaii July 1946

SUBDIVISION APPROVED:
 By E.L. Wung, Chief Engineer
 Dept. of Public Works