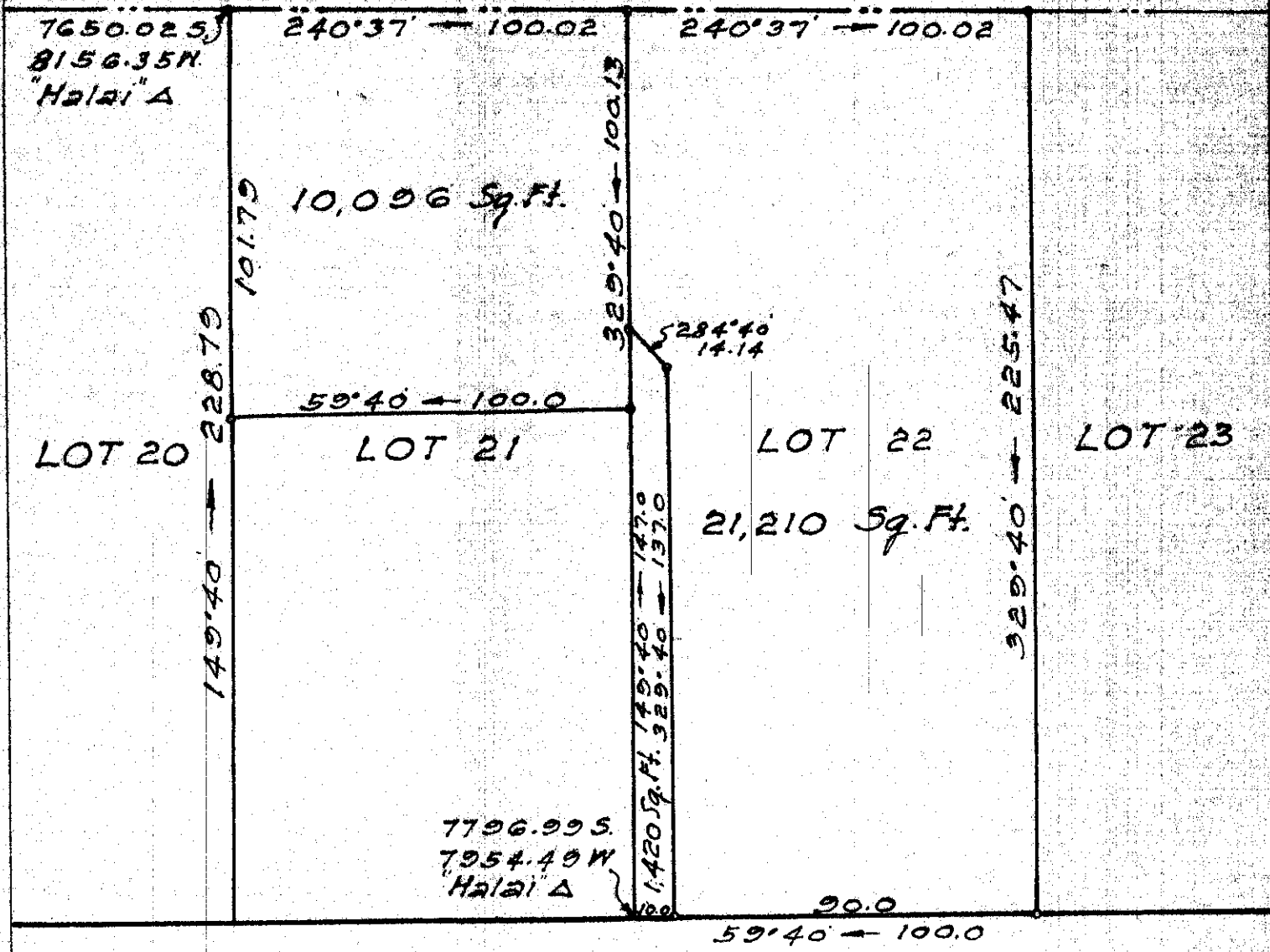


Grant 4801 to Jose G. Serrao



KAUMANA DRIVE

True North
Scale 1" = 40'

Plan Showing
 Subdivision of Lot 22
 J. E. Gamalielson Subdivision
 Being a portion of Grant 5484 to J. E. Gamalielson
 Pahoa, South Hilo, Hawaii

Scale 1 in. = 40 Ft.

Note: Road will not
 be accepted by
 the County of Hawaii

Plan by John N. Smith

SUBDIVISION APPROVED.

By *[Signature]*
 John L. Padgett
 Chief Engineer
 Dept. of Public Works

3/3/48