

True North  
Scale: 1 in. = 50 Ft.

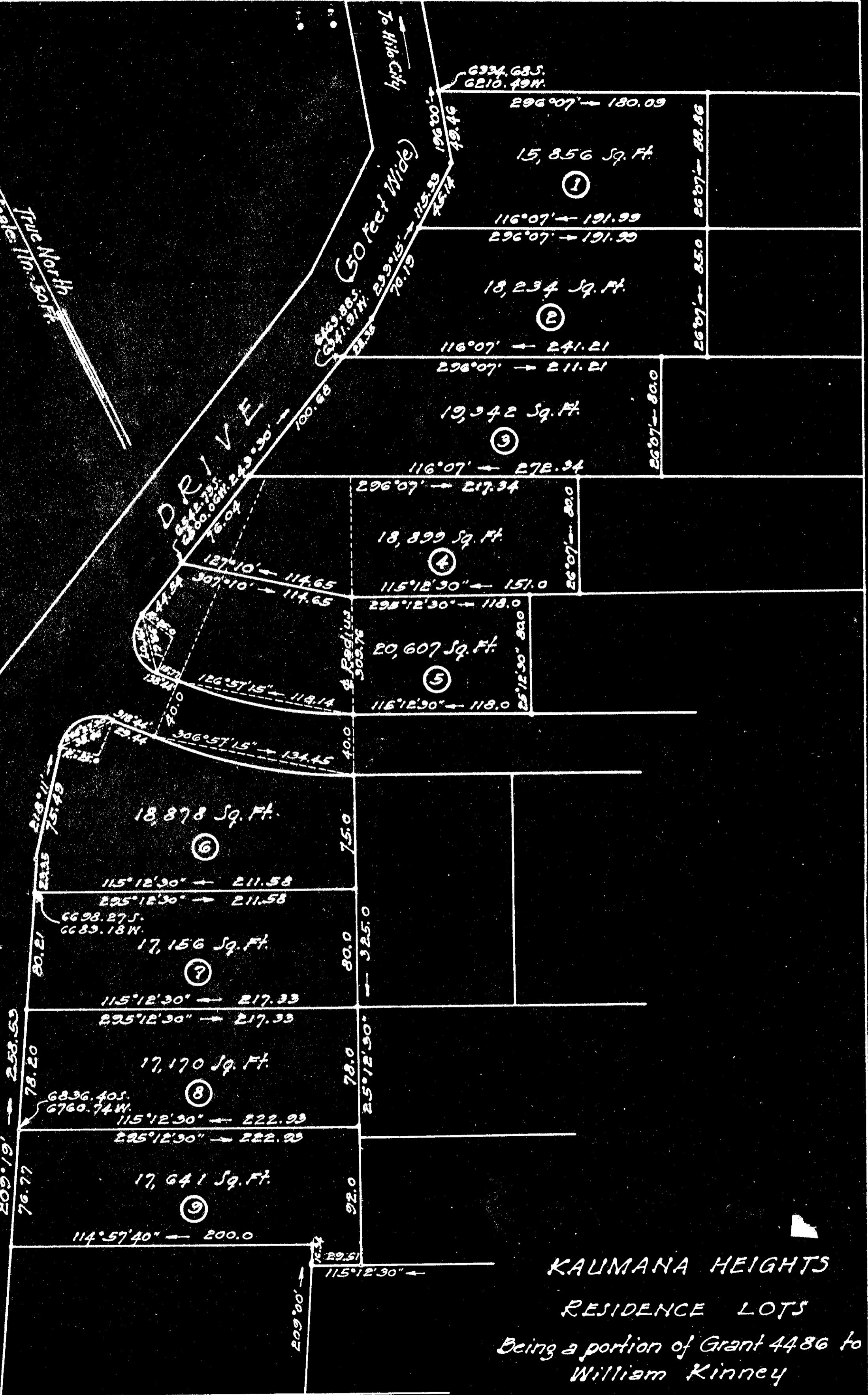
To Hilo City

(50 feet wide)

DRIVEWAY

K A U M A N A

To Hilo Country Club



**KAUMANA HEIGHTS**

**RESIDENCE LOTS**

Being a portion of Grant 4486 to William Kinney

Ponahawai, South Hilo, Hawaii

Scale: 1 in. = 50 Ft.

Survey & plan by Chas. L. Murray & John N. Smith  
Coordinates referred to "Hawai" Δ

SUBDIVISION APPROVED:  
By: E. L. Wung, June 12, 1946.  
E. L. Wung, Chief Engineer  
Dept. of Public Works, County of Hawaii