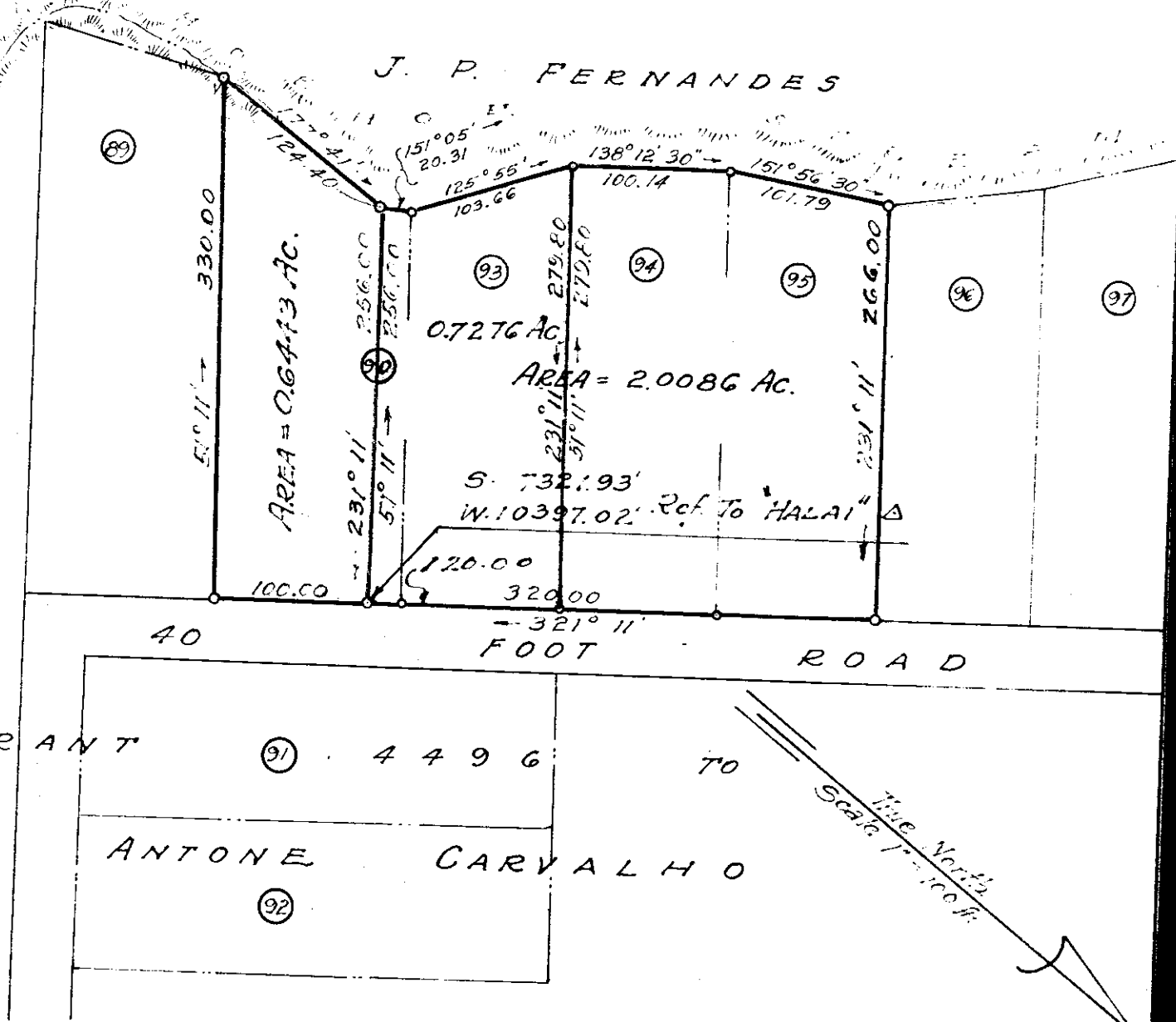


J. P. FERNANDES

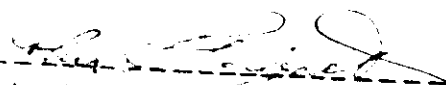


SUBDIVISION OF LOT 90 & LOT 93 AND CONSOLIDATION OF
 PORTION OF LOT 90, AND ALL OF LOTS 93, 94 & 95 OF
 THE CHARLES CHONG MAN SUBDIVISION GRANT 4496
 TO ANTONE CARVALHO.

PONAHAWAI, SOUTH HILO, HAWAII, T. H.

SCALE 1 inch = 100 ft.

Subdivision and Consolidation

APPROVED BY: 
 Chief Engineer
 Dept. of Public Works.
 County of Hawaii.

Survey & Plan by: E. K. Bright
 Surveyor