

Kaumana School

KAUMANA

DRIVE

To City →

Grant 5470
L.C. Lyman

1743 S.
819.45 W.
Kaumana

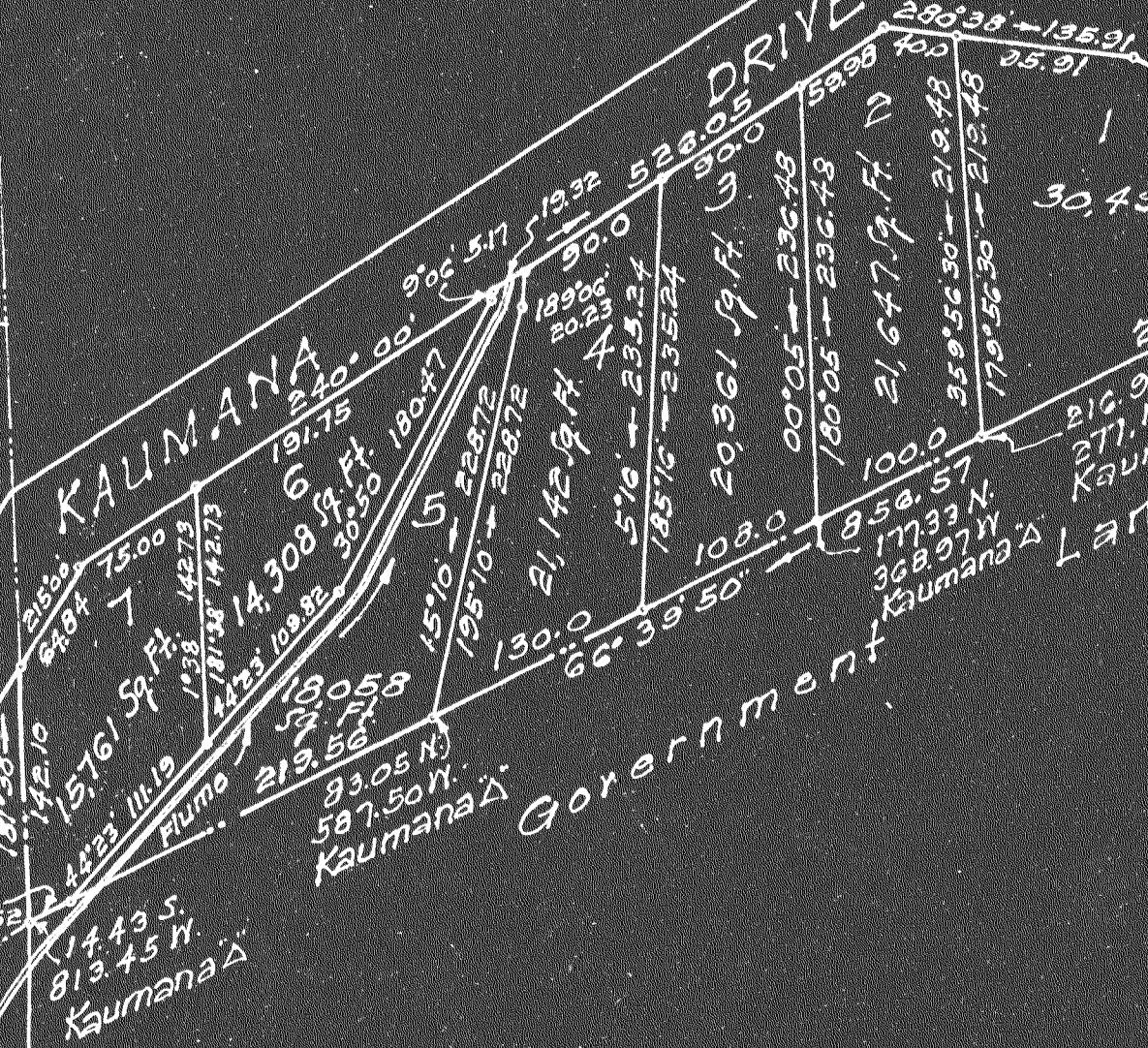
FILED

18058
Sq. Ft.
Kaumana

Government
Kaumana

Kaumana Land

30,494.97 Ft.



SUBDIVISION APPROVED:
 By: E. L. Wung
 E. L. Wung, Chief Engineer
 Dept. of Public Works
 May 2, 1946.

Plan showing
 Subdivision of a portion of Gr. 4601 to Mary E. Kaitenui
 Kaumana, South Hilo, Hawaii
 Scale 1 in. = 100 Ft.
 Survey & plan by J. N. Smith

True North
 Scale 1" = 100'