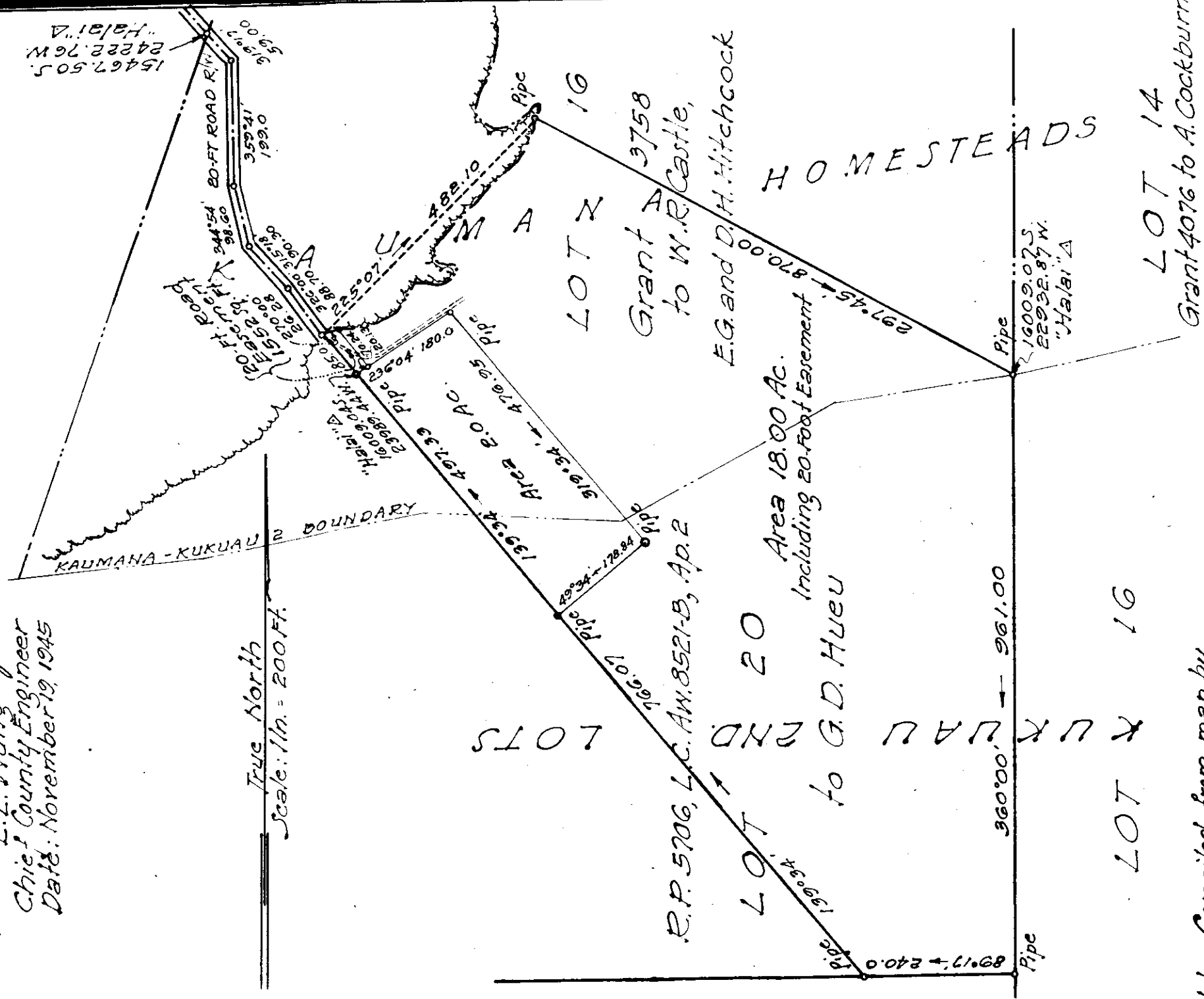


SUBDIVISION APPROVED

By: E. O. Wong

E. L. Wong
Chief County Engineer
Date: November 19, 1945

True North
Scale: 1 in. = 200 Ft.



Note: Compiled from map by
Peter E. Arioli dated March 1940

Subdivision of
A portion of Lot 16, Grant 3758
To W.R. Castle and E.G. and D.H. Hitchcock
Kaumana Homesteads, South Hilo, Hawaii
And a portion of Lot 20, Kukuaui End Lots
Kukuaui 2, South Hilo, Hawaii
Scale: 1 in. = 200 Ft.