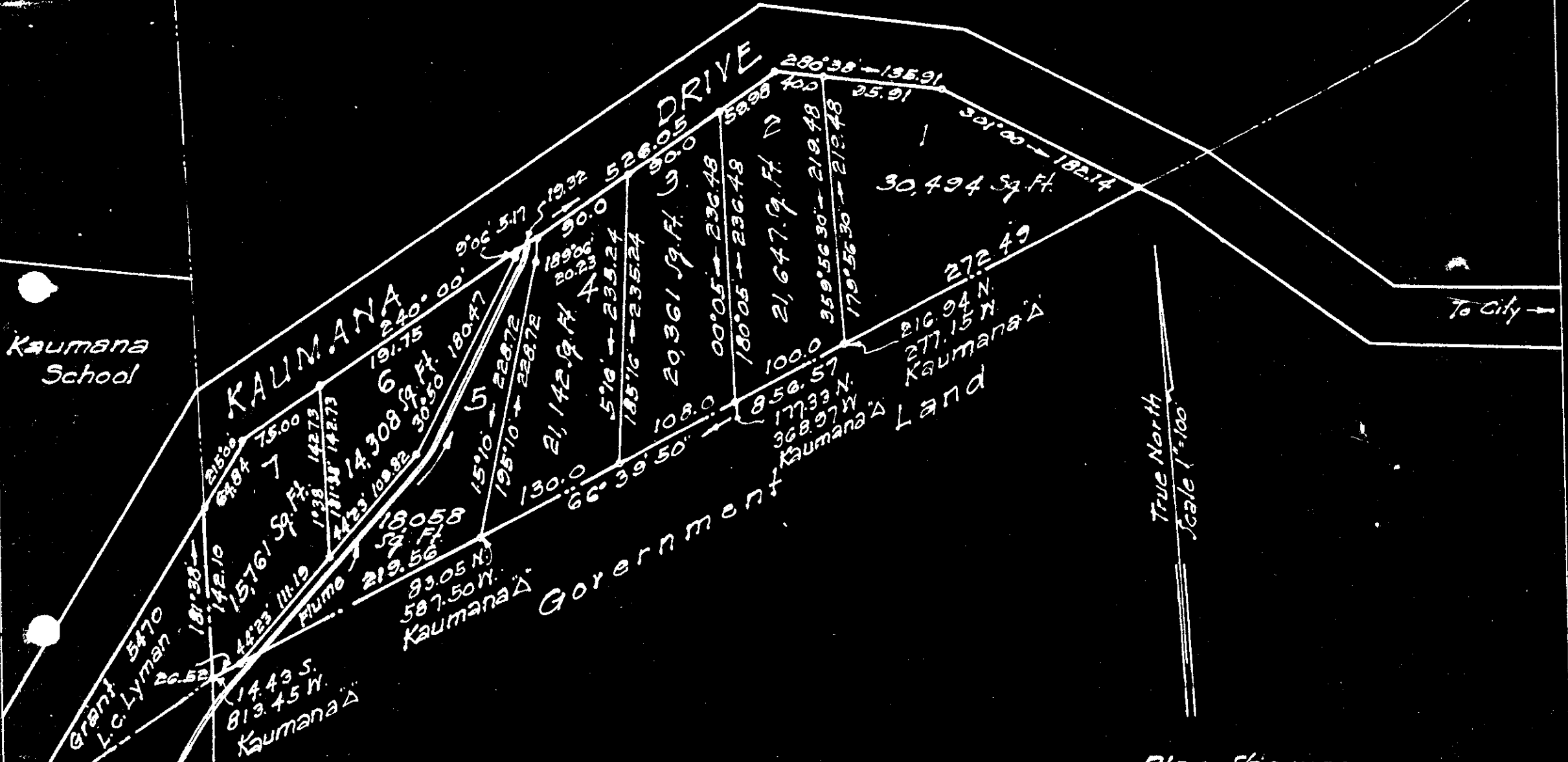


Kaumana
School



Grant 5470
L.C. Lyman
181°38'
26.52
142.10
15761 Sq. Ft.
75.00
138 14273
14135 14273
4423 111.19
11443 S.
813.45 W.
Kaumana Δ

SUBDIVISION APPROVED:

By: E. L. Nung
E. L. Nung, Chief Engineer
Dept of Public Works
May 2, 1946.

True North
Scale 1"=100

Plan showing
Subdivision of a portion of Gr. 4601 to Mary E. Kaihenui
Kaumana, South Hilo, Hawaii
Scale 1 in. = 100 Ft.
Survey & plan by J. N. Smith