

True North
Scale: 1 in. = 50 ft.

Grant 8255
to
H. Spencer

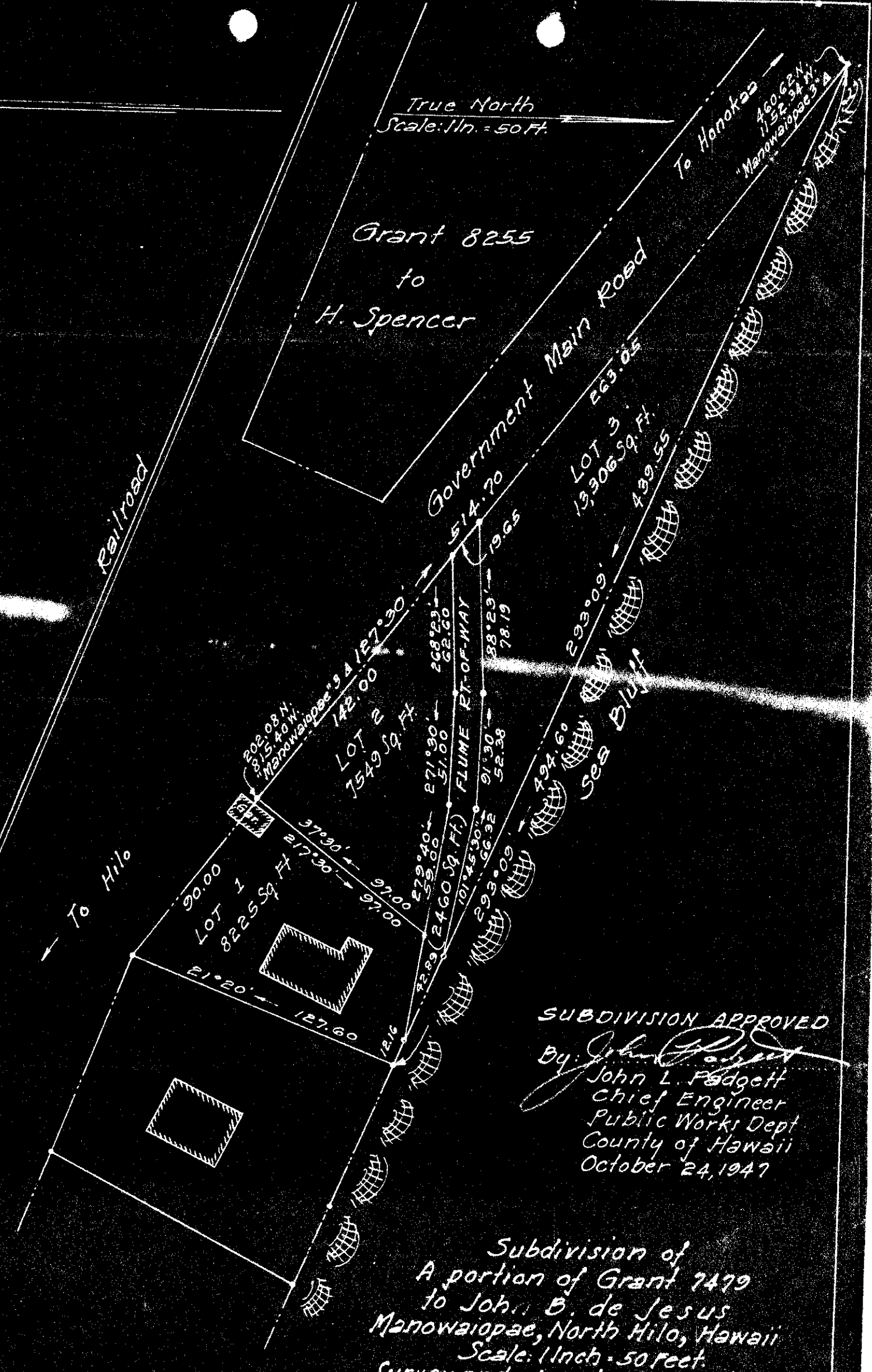
Railroad

Government Main Road

To Hanalei

To Hilo

Sea Bluff



SUBDIVISION APPROVED

By: *John L. Fodgett*
John L. Fodgett
Chief Engineer
Public Works Dept
County of Hawaii
October 24, 1947

Subdivision of
A portion of Grant 7479
to John B. de Jesus
Manowaiopae, North Hilo, Hawaii
Scale: 1 Inch = 50 feet.
Survey and plan by Chas. L. Murray
October 1947