

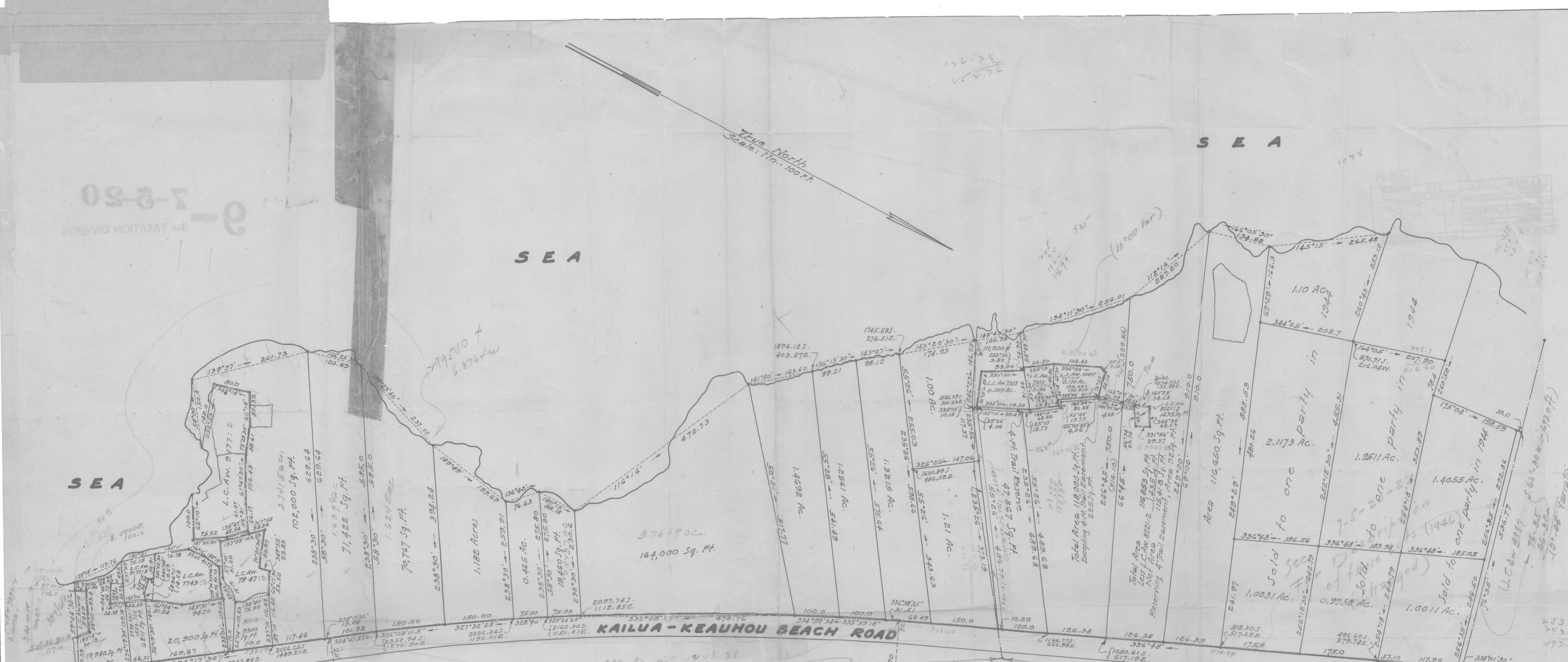
7-2-50
TAXATION DIVISION

True North
Scale: 1 in. = 100 ft.

SEA

SEA

SEA



PUAPUAA 2
R.P. 7819, L.C. AWARD 8559-D, APANA 8
TO WM. C. LUNALILO

PUAPUAA 1
R.P. 6716, L.C. AWARD 4887
TO SAM THOMAS

FRANK GOUVEIA BEACH LOTS SUBDIVISION
PUAPUAA 1 AND PUAPUAA 2
NORTH KONA, HAWAII
Scale: 1 inch = 100 Feet
Survey and plan by Charles L. Murray
June, 1944 to December, 1946
Note: Coordinate References to "Kahelo" Δ

SUBDIVISION APPROVED:
By: E. L. Wung
E. L. Wung
Chief Engineer
Public Works Dept.
County of Hawaii
Date: Dec. 16, 1946

Handwritten notes and signatures at the bottom of the page, including names like 'W' and 'Murray'.