

COUNTY OF HAWAII - STATE OF HAWAII

ORDINANCE NO. 138

AN ORDINANCE AMENDING SECTION 7.13, THE HONOKAA-HAINA-KUKUIHAELE ZONE MAP, ORDINANCE NO. 63 (ZONING ORDINANCE), REVISED ORDINANCES OF THE COUNTY OF HAWAII 1967, AS AMENDED, BY CHANGING THE DISTRICT CLASSIFICATION FOR A CERTAIN AREA OF LAND FROM SINGLE FAMILY RESIDENTIAL TO VILLAGE COMMERCIAL IN KAAO HOMESTEADS, HAMAKUA, HAWAII.

BE IT ORDAINED BY THE BOARD OF SUPERVISORS IN AND FOR THE COUNTY OF HAWAII:

SECTION 1. Section 7.13 of Ordinance No. 63 (Zoning Ordinance), Revised Ordinances of the County of Hawaii 1967, as amended, is hereby further amended by adding thereto the following subsection:

"7.13(a) The District Classification of the following area situated at Kaao Homesteads, Hamakua, Hawaii, shall be Village-Commercial:

Beginning at the west corner of this parcel of land, being also the east corner of the Hawaii Belt Road-Pakalana Street intersection, the coordinates of said point of beginning referred to Government Survey Triangulation Station "Kaao" being 1,252.46 feet south and 373.98 feet west and running by azimuths measured clockwise from true south:

- 1. 193° 49' 131.94 feet along the east side of Pakalana Street;
- 2. 283° 49' 150.00 feet along the south side of Kou Street;
- 3. 13° 49' 151.51 feet along Lot 73-A of Teixeira Subdivision;
- 4. 111° 15' 151.27 feet along the north side of Hawaii Belt Road to the point ~~of beginning and~~ containing an area of 21,259 square feet more or less.

as shown on the map attached hereto, marked Exhibit A, and by reference made a part hereof."

SECTION 2. This ordinance shall take effect upon its approval.

INTRODUCED BY:

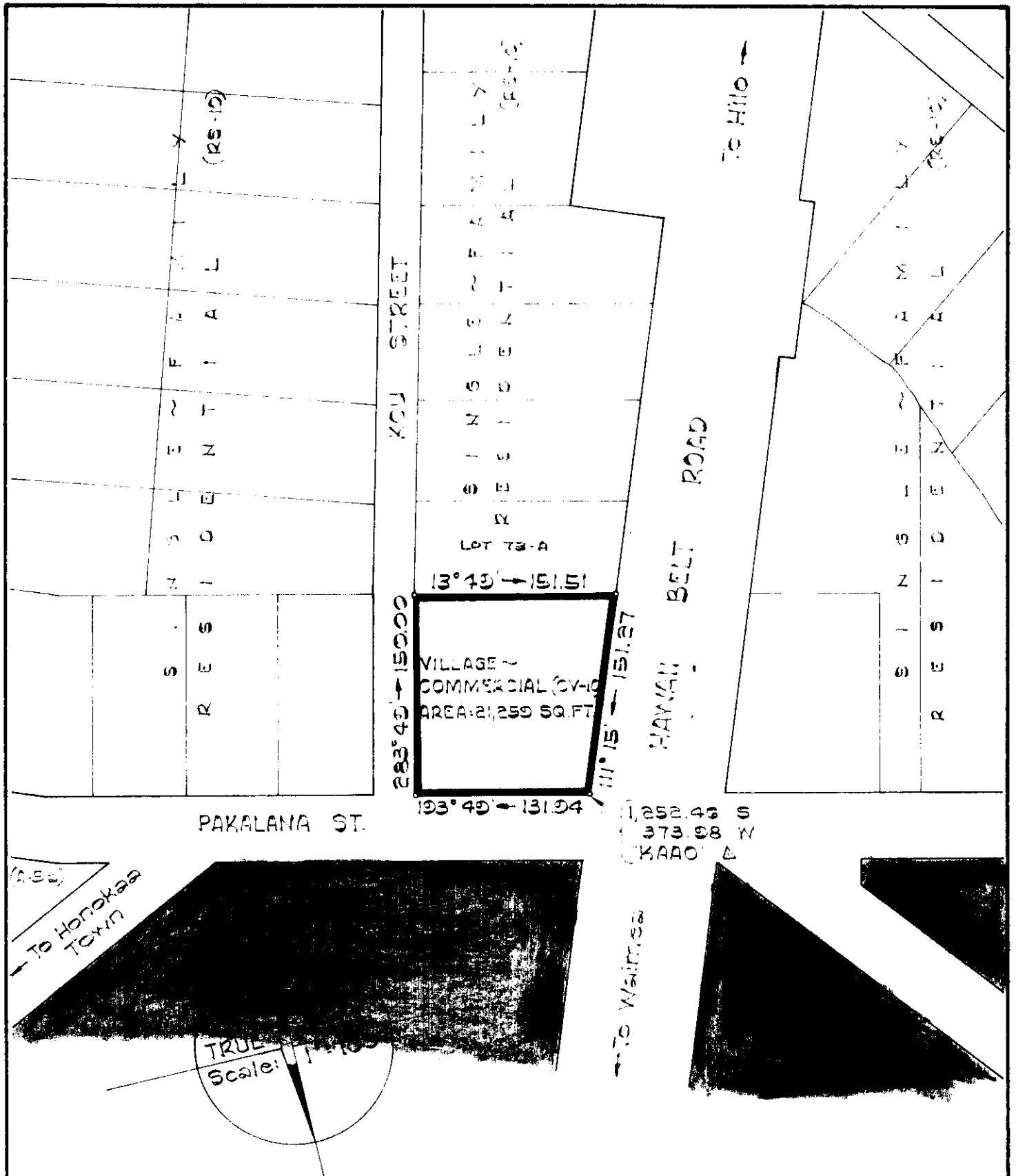


SUPERVISOR, COUNTY OF HAWAII

Hilo, Hawaii

Date of Introduction: July 3, 1968

Date of Adoption: July 17, 1968



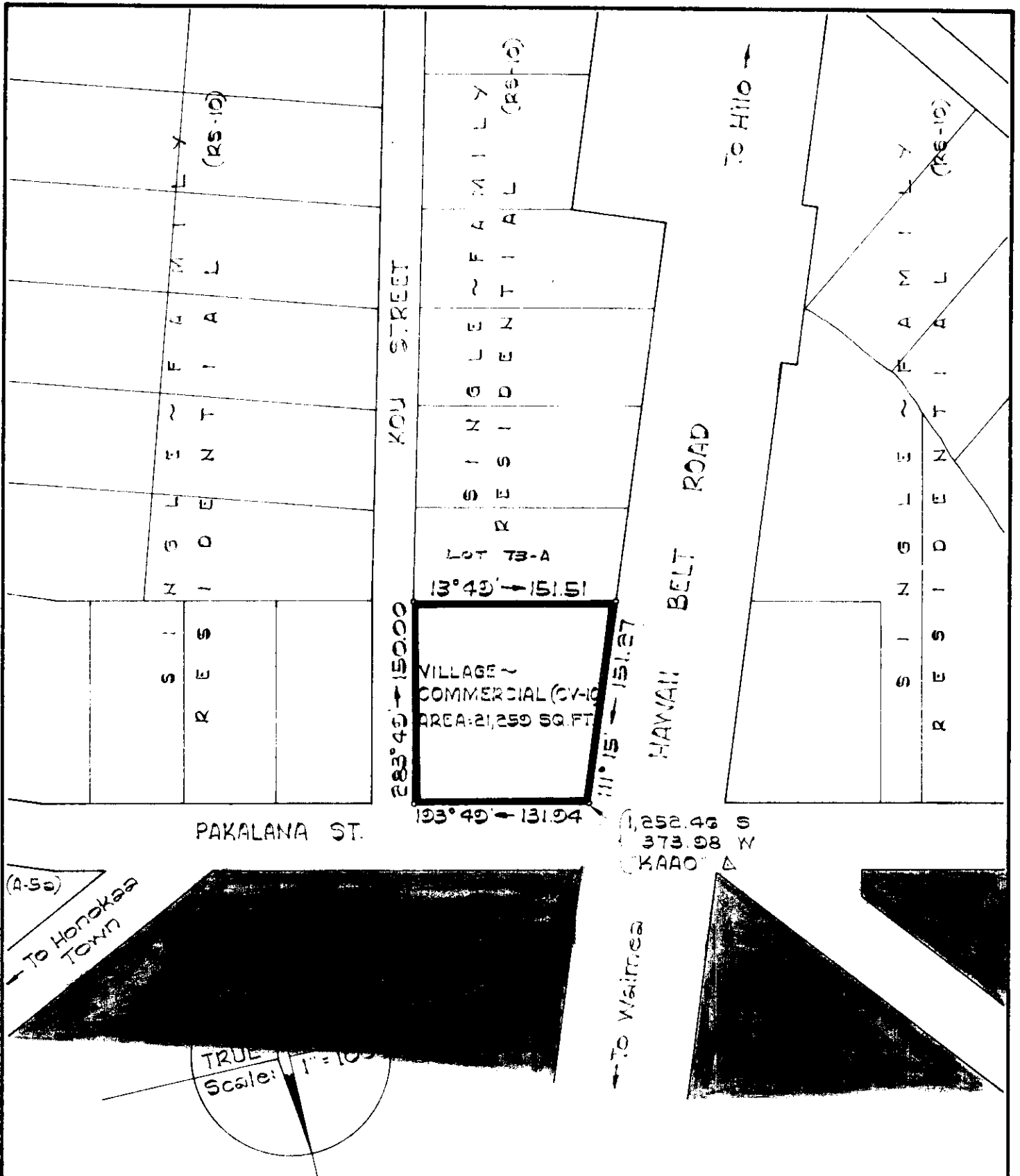
AMENDMENT TO THE COUNTY ZONING ORDINANCE

AMENDMENT NO. 1 OF SECTION 7.13, CHANGING THE DISTRICT CLASSIFICATION OF A PORTION OF ORDINANCE NO. 110, BEING THE HONOKAA~HAINA~KUKUIHAELE ZONE MAP FROM SINGLE FAMILY RESIDENTIAL (RS-10) TO VILLAGE COMMERCIAL (CV-10) IN KAAO HOMESTEADS, HAMAKUA, HAWAII.

DATE OF PUBLIC HEARINGS: MARCH 15, 1968 & MAY 13, 1968

DATE OF APPROVAL:

PREPARED BY: PLANNING COMMISSION
COUNTY OF HAWAII



AMENDMENT TO THE COUNTY ZONING ORDINANCE

AMENDMENT NO. 1 OF SECTION 7.13, CHANGING THE DISTRICT CLASSIFICATION OF A PORTION OF ORDINANCE NO. 110, BEING THE HONOKAA~HAINA~KUKUIHAELE ZONE MAP FROM SINGLE FAMILY RESIDENTIAL (RS-10) TO VILLAGE COMMERCIAL (CV-10) IN KAAO HOMESTEADS, HAMAKUA, HAWAII.

DATE OF PUBLIC HEARING: MARCH 15, 1968 & MAY 13, 1968
 DATE OF APPROVAL:

PREPARED BY: PLANNING COMMISSION
 COUNTY OF HAWAII

ORDINANCE NO. 137

(Bill No. 508 - 1968)

AN ORDINANCE TO AMEND THE GENERAL PLAN OF HONOKAA BY CHANGING THE LAND USE DESIGNATION FOR A CERTAIN AREA OF LAND FROM SINGLE-FAMILY RESIDENTIAL USE TO VILLAGE-COMMERCIAL USE AT KAAO HOMESTEADS, HAMAKUA, HAWAII."

Date Introduced: July 3, 1968 - Date Approved:
July 17, 1968 - Date Effective: July 17, 1968.

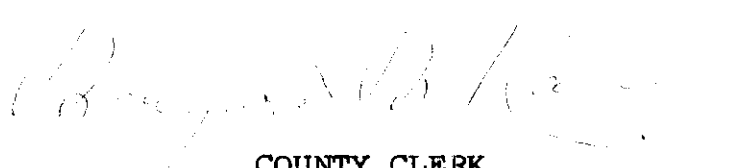
ORDINANCE NO. 138

(Bill No. 509 - 1968)

AN ORDINANCE AMENDING SECTION 7.13, THE HONOKAA-HAINA-KUKUIHAELE ZONE MAP, ORDINANCE NO. 63 (ZONING ORDINANCE), REVISED ORDINANCES OF THE COUNTY OF HAWAII 1967, AS AMENDED, BY CHANGING THE DISTRICT CLASSIFICATION FOR A CERTAIN AREA OF LAND FROM SINGLE FAMILY RESIDENTIAL TO VILLAGE COMMERCIAL IN KAAO HOMESTEADS, HAMAKUA, HAWAII.

Date Introduced: July 3, 1968 - Date Approved:
July 17, 1968 - Date Effective: July 17, 1968

Copies of the foregoing Ordinances, in full, are on file in the Office of the County Clerk for use and examination by the public.


COUNTY CLERK
COUNTY OF HAWAII