

## COUNTY OF HAWAII - STATE OF HAWAII

ORDINANCE NO. 400

AN ORDINANCE AMENDING SECTION 7.04, THE KAILUA URBAN ZONE MAP, ORDINANCE NO. 63 (ZONING ORDINANCE), REVISED ORDINANCES OF THE COUNTY OF HAWAII 1967, AS AMENDED, BY CHANGING THE DISTRICT CLASSIFICATION FROM GENERAL INDUSTRIAL (MG-1a) TO OPEN (O) AND VILLAGE COMMERCIAL (CV-10) IN KEAHUOLU, NORTH KONA, HAWAII, COVERED BY TAX MAP KEY 7-4-08; PORTION OF 2.

BE IT ORDAINED BY THE COUNTY COUNCIL IN AND FOR THE COUNTY OF HAWAII:

SECTION 1. Section 7.04 of Ordinance No. 63 (Zoning Ordinance), Revised Ordinances of the County of Hawaii 1967, as amended, is hereby further amended by adding thereto the following subsections:

"7.04(e-1). The district classification of the following area situated at Keahuolu, North Kona, Hawaii, shall be Open (O):

Beginning at the west corner of this parcel of land, the coordinates of which referred to Government Survey Triangulation Station "KAILUA" being 1609.61 feet north and 732.72 feet west and running by azimuths measured clockwise from true south:

1. 205<sup>o</sup> 51' 134.00 feet along remainder of R.P. 6851, L. C. Aw. 8452, Apana 12 to Keohokalole;  
 Thence following along remainder of R. P. 6851, L. C. Aw. 8452, Apana 12 to Keohokalole on a curve to the right with a radius of 30.00 feet, the chord azimuth and distance being:
2. 250<sup>o</sup> 51' 42.43 feet;
3. 295<sup>o</sup> 51' 190.00 feet along the south side of Kailua-Kawaihae Road;
4. 298<sup>o</sup> 42' 39" 158.64 feet along the south side of Kailua-Kawaihae Road;
5. 25<sup>o</sup> 11' 59" 156.09 feet along remainder of R. P. 6851, L. C. Aw. 8452, Apana 12 to Keohokalole;
6. 115<sup>o</sup> 51' 380.21 feet along remainder of R. P. 6851, L. C. Aw. 8452, Apana 12 to Keohokalole to the point of beginning and containing an area of 1.403 acres.

"7.04(e-2). The district classification of the following area situated at Keahuolu, North Kona, Hawaii, shall be Village Commercial (CV-10):

Beginning at the north corner of this parcel of land, the coordinates of which referred to Government Survey Triangulation Station "KAILUA" being 1,609.61 feet north and 732.72 feet west and running by azimuths measured clockwise from true south:

1. 295<sup>o</sup> 51' 380.21 feet along remainder of R. P. 6851, L. C. Aw. 8452, Apana 12 to Keohokalole;
  2. 25<sup>o</sup> 11' 59" 371.17 feet along remainder of R. P. 6851, L. C. Aw. 8452, Apana 12 to Keohokalole;
  3. 27<sup>o</sup> 26' 371.67 feet along remainder of R. P. 6851, L. C. Aw. 8452, Apana 12 to Keohokalole;
  4. 117<sup>o</sup> 26' 69.00 feet along remainder of R. P. 6851, L. C. Aw. 8452, Apana 12 to Keohokalole;
  5. 207<sup>o</sup> 26' 46.21 feet along remainder of R. P. 6851, L. C. Aw. 8452, Apana 12 to Keohokalole;
  6. 115<sup>o</sup> 51' 276.47 feet along remainder of R. P. 6851, L. C. Aw. 8452, Apana 12 to Keohokalole;
- Thence following along remainder of R. P. 6851, L. C. Aw. 8452, Apana 12 to Keohokalole on a curve to the right with a radius of 30.00 feet, the chord azimuth and distance being:
7. 160<sup>o</sup> 51' 42.43 feet;
  8. 205<sup>o</sup> 51' 664.55 feet along remainder of R. P. 6851, L. C. Aw. 8452, Apana 12 to Keohokalole to the point of beginning and containing an area of 6.143 acres.

All as outlined in red on the map attached hereto, marked Exhibit "A," and by reference made a part hereof."

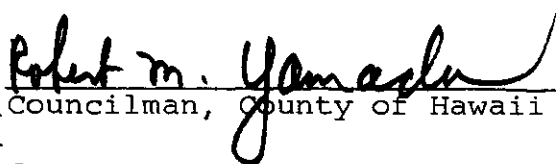
SECTION 2. This ordinance shall take effect upon its approval.

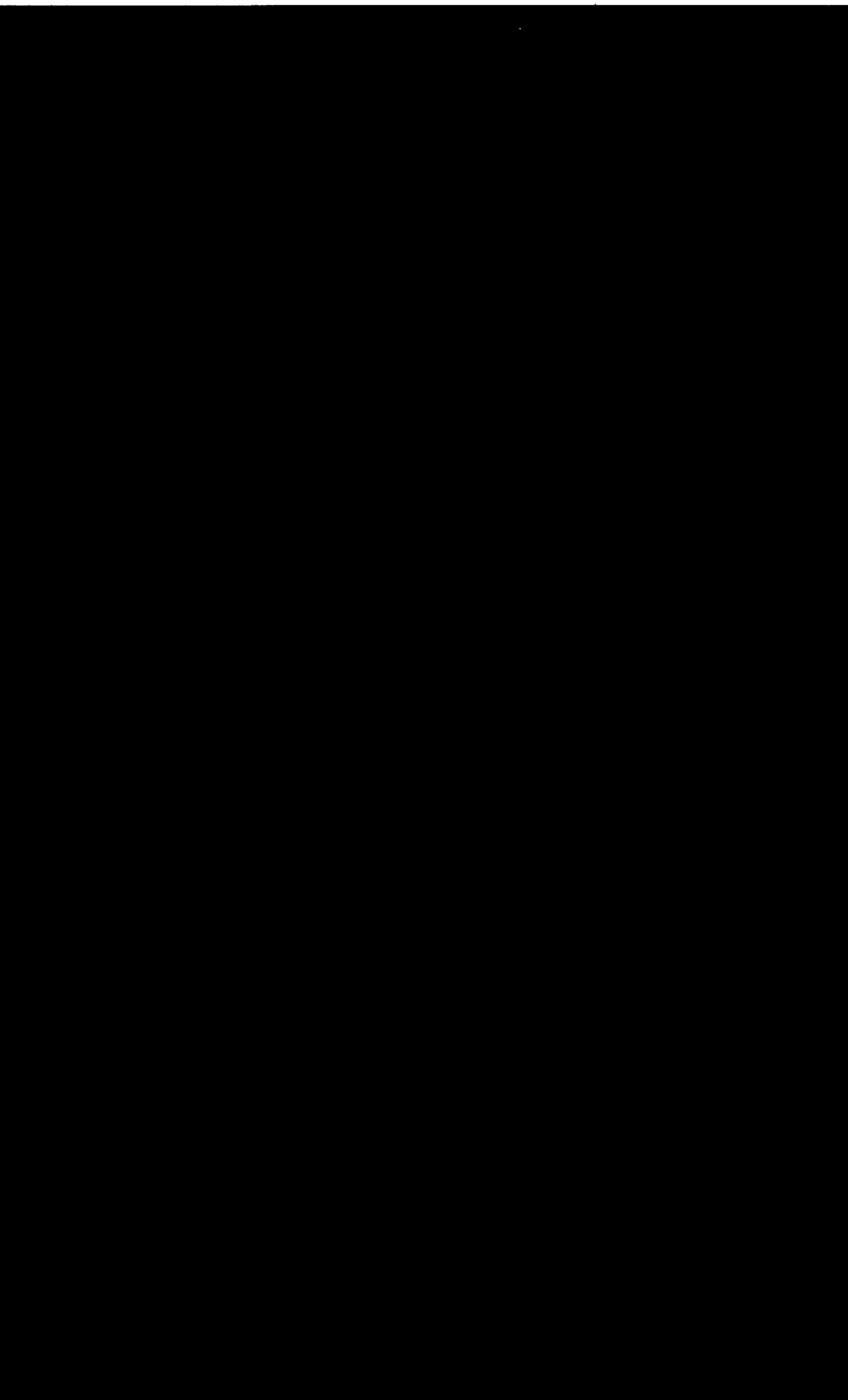
INTRODUCED BY:

Hilo, Hawaii

Date of Introduction: May 19, 1971 Councilman, County of Hawaii

Date of Adoption: June 2, 1971

  
Robert M. Yamashiro



Hilo, Hawaii

Date: May 19, 1971

FIRST READING			
	AYES	NOES	A/E
Carpenter			X
De Luz	X		
Edwards	X		
Greenwell	X		
Hisaoka	X		
Souza	X		
Yadao	X		
Yamada	X		
Chr Matayoshi	X		
	8	0	1

Publication Date: MAY 23 1971

Hilo, Hawaii

Date: June 2, 1971

SECOND & FINAL READING			
	AYES	NOES	A/E
Carpenter	X		
De Luz	X		
Edwards			X
Greenwell	X		
Hisaoka	X		
Souza	X		
Yadao	X		
Yamada	X		
Chr Matayoshi	X		
	8	0	1

Publication Date: JUN 2 1971

We do hereby certify that the foregoing BILL was adopted by the County Council and published as indicated above.

*Hubert Matayoshi*  
 Council Chairman

*Tadashi Suzuki*  
 County Clerk

Approved/Disapproved this 3 day of  
June, 1971

*Junichi Kimura*  
 Mayor, County of Hawaii

Bill No. 794

Reference: PEDLC-54

M. B. No. 1182, 1185, 1077

Ord. No. 400

Bill No. 794 - 1971

AN ORDINANCE AMENDING SECTION 7.04, THE KAILUA URBAN ZONE MAP, ORDINANCE NO. 63 (ZONING ORDINANCE), REVISED ORDINANCES OF THE COUNTY OF HAWAII 1967, AS AMENDED, BY CHANGING THE DISTRICT CLASSIFICATION FROM GENERAL INDUSTRIAL (MG-1a) TO OPEN (O) AND VILLAGE COMMERCIAL (CV-10) IN KEAHUOLU, NORTH KONA, HAWAII, COVERED BY TAX MAP KEY 7-4-08: PORTION OF 2.

This Bill proposes to amend the Kailua Urban Zone Map by changing the district classification from General Industrial 1 Acre (MG-1a) to Open (O) and Village Commercial 10,000 square feet (CV-10) in Keahuolu, North Kona, Hawaii, containing an area of 7.546 acre of land located on the makai side of the Kailua-Kawaihae Road, approximately 500 feet east of Palani Road.

Date Introduced: May 19, 1971

Copies of the foregoing Bill, in full, are on file in the Office of the County Clerk for use and examination by the public.

---

I hereby certify that the foregoing Bill passed first reading at the meeting of the County Council on May 19, 1971, by the following aye and no vote:

AYES: Councilmen De Luz, Edwards, Hisaoka, Greenwell, Souza, Yadao, Yamada and Chairman Matayoshi - 8.

NOES: None.

ABSENT AND EXCUSED: Councilman Carpenter - 1.



7.04, THE KAILUA URBAN ZONE MAP, ORDINANCE NO. 63 (ZONING ORDINANCE), REVISED ORDINANCES OF THE COUNTY OF HAWAII 1967, AS AMENDED, BY CHANGING THE DISTRICT CLASSIFICATION FROM GENERAL INDUSTRIAL (MG-1a) TO OPEN (O) AND VILLAGE COMMERCIAL (CV-10) IN KEAHUOLU, NORTH KONA, HAWAII, COVERED BY TAX MAP KEY 7-4-08: PORTION OF 2.

This Bill proposes to amend the Kailua Urban Zone Map by changing the district classification from General Industrial 1 Acre (MG-1a) to Open (O) and Village Commercial 10,000 square feet (CV-10) in Keahuolu, North Kona, Hawaii, containing an area of 7.546 acre of land located on the makai side of the Kailua-Kawaihae Road, approximately 500 feet east of Palani Road.

Date Introduced: May 19, 1971

Copies of the foregoing Bill, in full, are on file in the Office of the County Clerk for use and examination by the public.

I hereby certify that the foregoing Bill passed first reading at the meeting of the County Council on May 19, 1971, by the following aye and no vote:

AYES: Councilmen De Luz, Edwards, Hisaoka, Greenwell, Souza, Yadao, Yamada and Chairman Matayoshi—8.

NOES: None.

ABSENT AND EXCUSED: Councilman Carpenter—1.

Robert S. Shieji  
DEPUTY COUNTY CLERK  
COUNTY OF HAWAII  
(810—Hawaii Tribune-Herald:  
May 26, 1971.)

*Robert S. Shieji*  
DEPUTY COUNTY CLERK  
COUNTY OF HAWAII

ORDINANCE NO. 400  
(Bill No. 794-1971)

AN ORDINANCE AMENDING SECTION 7.04, THE KAILUA URBAN ZONE MAP, ORDINANCE NO. 63 (ZONING ORDINANCE), REVISED ORDINANCES OF THE COUNTY OF HAWAII 1967, AS AMENDED, BY CHANGING THE DISTRICT CLASSIFICATION FROM GENERAL INDUSTRIAL (MG-1a) TO OPEN (O) AND VILLAGE COMMERCIAL (CV-10) IN KEAHUOLU, NORTH KONA, HAWAII, COVERED BY TAX MAP KEY 7-4-08: PORTION OF 2.

Date Approved: June 2, 1971  
Date Effective: June 3, 1971

Copies of the foregoing Ordinance, in full, are on file in the Office of the County Clerk for use and examination by the public.

---

I hereby certify that the foregoing Ordinance passed second and final reading at the meeting of the County Council on June 2, 1971, by the following aye and no vote:

AYES: Councilmen Carpenter, De Luz, Greenwell, Hisaoka, Souza, Yadao, Yamada and Chairman Matayoshi - 8.

NOES: None.

ABSENT AND EXCUSED: Councilman Edwards - 1.

*Tadashi Suzuki*

COUNTY CLERK  
COUNTY OF HAWAII

AN ORDINANCE AMENDING SECTION 7.04, THE KAILUA URBAN ZONE MAP, ORDINANCE NO. 63 (ZONING ORDINANCE), REVISED ORDINANCES OF THE COUNTY OF HAWAII 1967, AS AMENDED, BY CHANGING THE DISTRICT CLASSIFICATION FROM GENERAL INDUSTRIAL (MG-1a) TO OPEN (O) AND VILLAGE COMMERCIAL (CV-10) IN KEAHUOLU, NORTH KONA, HAWAII, COVERED BY TAX MAP KEY 7-4-08: PORTION OF 2.

Date Approved: June 2, 1971  
Date Effective: June 3, 1971

Copies of the foregoing Ordinance, in full, are on file in the Office of the County Clerk for use and examination by the public.

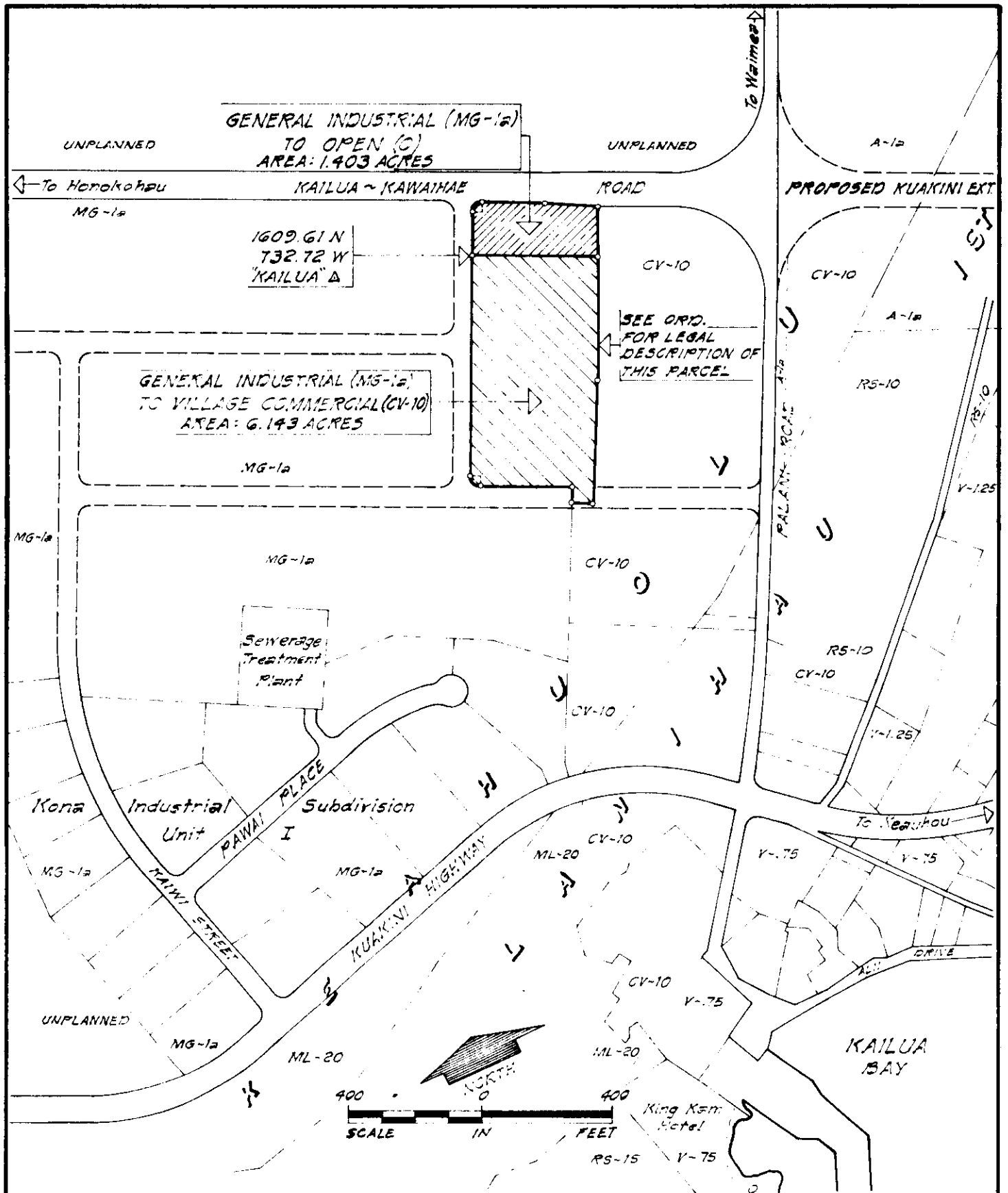
I hereby certify that the foregoing Ordinance passed second and final reading at the meeting of the County Council on June 2, 1971, by the following aye and no vote:

AYES: Councilmen Carpenter, De Luz, Greenwell, Hisaoka, Souza, Yadao, Yamada and Chairman Matayoshi - 8.

NOES: None.

ABSENT AND EXCUSED: Councilman Edwards - 1.

Tadashi Suzuki  
COUNTY CLERK  
COUNTY OF HAWAII  
(894 - Hawaii Tribune-Herald:  
June 8, 1971.)



## AMENDMENT TO THE COUNTY ZONING ORDINANCE

AMENDMENT NO. 5 OF SECTION 7.04, KAILUA URBAN ZONE MAP, PORTION OF ORDINANCE NO. 74, CHANGING THE DISTRICT CLASSIFICATION FROM GENERAL INDUSTRIAL (MG-1a) TO OPEN (O) AND VILLAGE COMMERCIAL (CV-10) IN KEAHUOLU, NORTH KONA, HAWAII.

DATE OF PUBLIC HEARING: OCT. 22, 1970

DATE OF APPROVAL:

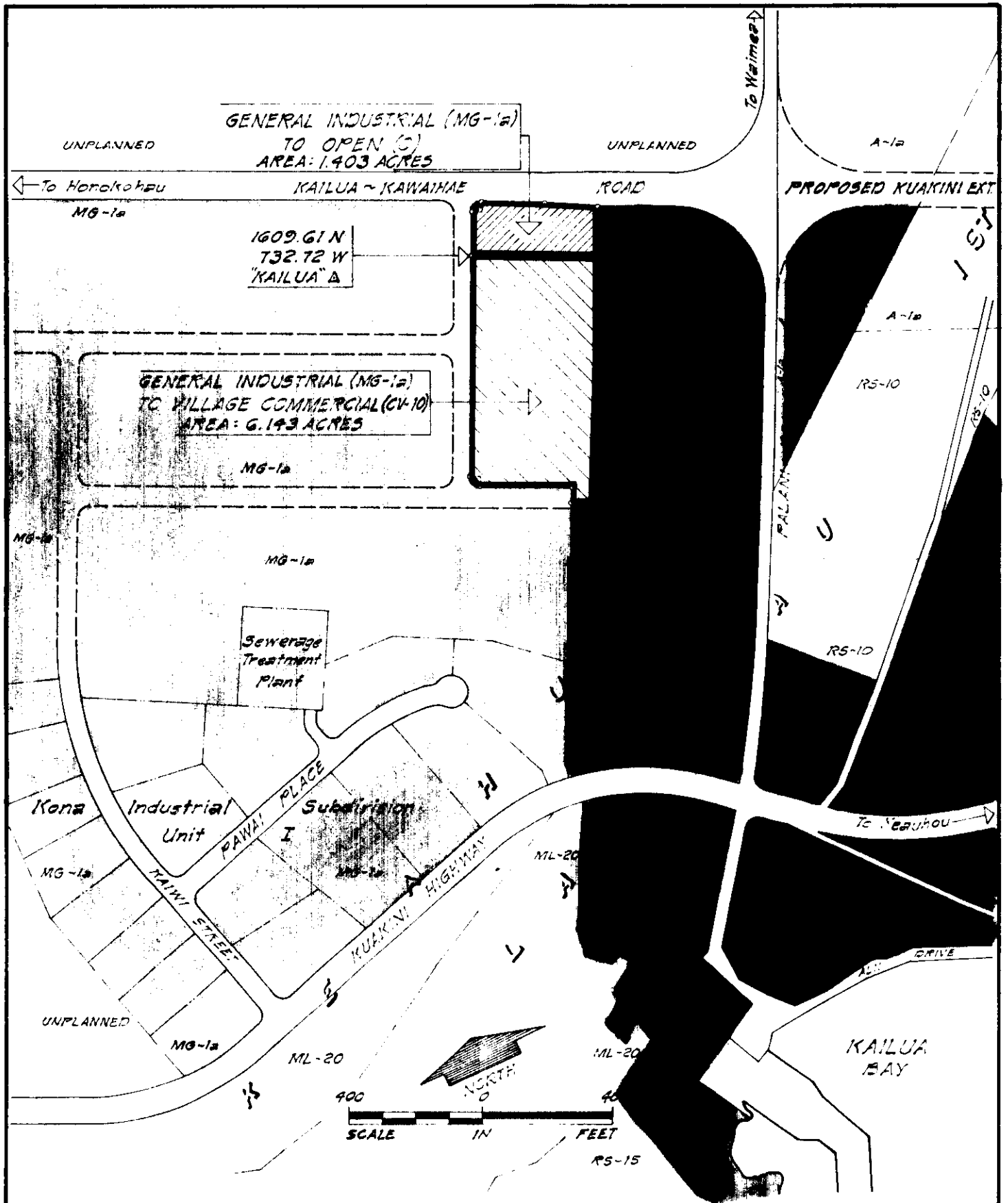
ORDINANCE NO.

PREPARED BY: PLANNING DEPARTMENT  
COUNTY OF HAWAII

Tax Map Key: 7-4-08

Apr. 7, 1971

EXHIBIT "A"



## AMENDMENT TO THE COUNTY ZONING ORDINANCE

AMENDMENT NO. 5 OF SECTION 7.04, KAILUA URBAN ZONE MAP, PORTION OF ORDINANCE NO. 74, CHANGING THE DISTRICT CLASSIFICATION FROM GENERAL INDUSTRIAL (MG-1a) TO OPEN (O) AND VILLAGE COMMERCIAL (CV-10) IN KEAHUOLU, NORTH KONA, HAWAII.

DATE OF PUBLIC HEARING: OCT. 22, 1970

DATE OF APPROVAL:

ORDINANCE NO.

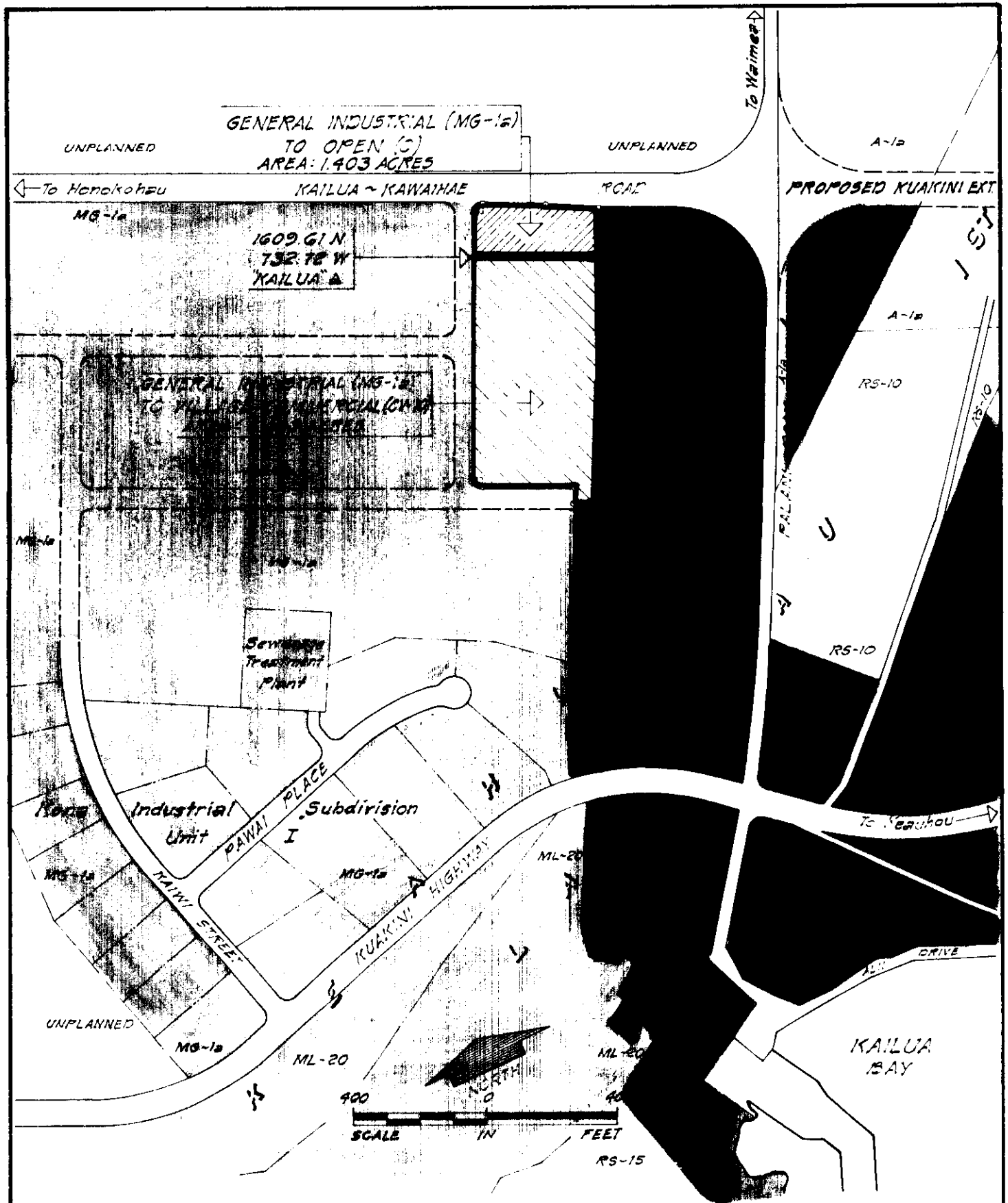
PREPARED BY: PLANNING DEPARTMENT  
COUNTY OF HAWAII

Tax Map Key: 7-4-08

Apr. 7, 1971

EXHIBIT "A"





## AMENDMENT TO THE COUNTY ZONING ORDINANCE

AMENDMENT NO. 5 OF SECTION 7.04, KAILUA URBAN ZONE MAP, PORTION OF ORDINANCE NO. 74, CHANGING THE DISTRICT CLASSIFICATION FROM GENERAL INDUSTRIAL (MG-1a) TO OPEN (O) AND VILLAGE COMMERCIAL (CV-10) IN KEAHOLOU, NORTH KONA, HAWAII.

DATE OF PUBLIC HEARING: OCT. 22, 1970

DATE OF APPROVAL:

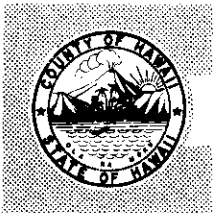
ORDINANCE NO.

PREPARED BY: PLANNING DEPARTMENT  
COUNTY OF HAWAII

Tax Map Key: 7-4-08

Apr. 7, 1971

EXHIBIT "A"



**PLANNING COMMISSION**  
**Planning Department**

25 AUPUNI STREET • HILO, HAWAII 96720

SHUNICHI KIMURA  
Mayor

COUNTY OF  
HAWAII

Chairman

April 26, 1971

The Honorable Herbert T. Matayoshi  
Chairman, County Council  
and Members of the Council  
County of Hawaii  
Hilo, Hawaii

Re: Rezoning Request - Liliuokalani Trust  
Keahuolu, North Kona, Hawaii, TMK 7-4-08; Portion of 2

The Planning Commission, after a duly held public hearing on October 22, 1970 voted to recommend for your approval the attached proposed Bill to change the district classification from General Industrial 1 Acre (MG-1a) to Open (O) and Village Commercial 10,000 square feet (CV-10) in Keahuolu, North Kona, Hawaii. The request for rezoning is a 7.546 acre parcel of land located on the makai side of the Kailua-Kawaihae Road, approximately 500 feet east of Palani Road.

O. W. Efurud, Jr.  
Chairman

lat

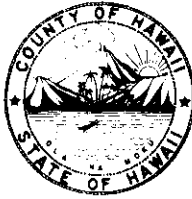
Attachments - 2

cc C. W. Stevenson  
James R. Bell  
Chief Engineer, Public Works  
Manager, Water Supply  
Department of Health  
Hilo Tax Office  
Hawaiian Telephone Co.  
Hilo Electric Light Co.

APPROVED:

SHUNICHI KIMURA  
MAYOR

Tadashi Suzuki  
COUNTY CLERK



Robert Shioji  
DEPUTY COUNTY CLERK

**OFFICE OF THE COUNTY CLERK**  
COUNTY OF HAWAII  
HILO, HAWAII 96720

Mayor Shunichi Kimura  
County of Hawaii  
Hilo, Hawaii

I hereby transmit Ordinance Bill No. 794 passed by  
the County Council on second and final reading.

*Tadashi Suzuki*  
COUNTY CLERK

Encl.

Dated: June 3, 1971