

## COUNTY OF HAWAII - STATE OF HAWAII

ORDINANCE NO. 418

AN ORDINANCE AMENDING SECTION 7.18, THE PUNA DISTRICT ZONE MAP, ORDINANCE NO. 63 (ZONING ORDINANCE), REVISED ORDINANCES OF THE COUNTY OF HAWAII 1967, AS AMENDED, BY CHANGING THE DISTRICT CLASSIFICATION FROM AGRICULTURAL (A-3a) TO AGRICULTURAL (A-1a) IN HALEKAMAHINA, PUNA, HAWAII, COVERED BY TAX MAP KEY 1-4-01:42.

BE IT ORDAINED BY THE COUNCIL OF THE COUNTY OF HAWAII:

SECTION 1. Section 7.18 of Ordinance No. 63 (Zoning Ordinance), Revised Ordinances of the County of Hawaii 1967, as amended, is hereby further amended by adding thereto the following subsection:

"7.18(c). The district classification of the following area situated at Halekamahina, Puna, Hawaii, shall be Agricultural (A-1a):


Beginning at the northwest corner of this parcel of land at the southwest corner of Parcel 2 and on the easterly side of a 40 feet roadway the coordinates of said point of beginning referred to Government Survey Triangulation Station "KAPOHO" being 4411.90 feet South and 22,250.30 feet West and running by azimuths measured clockwise from true South:

- |    |      |     |     |  |
|----|------|-----|-----|--|
| 1. | 289° | 38' | 50" | 401.89 feet along Parcel 2, a portion of R.P. 7483, Apana 3, LC Aw. 4452, Apana 1 to H. Kalama;          |
| 2. | 295° | 42' | 48" | 147.74 feet along same;  |
| 3. | 51°  | 02' | 30" | 762.97 feet along Executive Order 1750, State of Hawaii;   |
| 4. | 79°  | 07' | 30" | 175.70 feet along same;  |
| 5. | 199° | 38' | 50" | 636.12 feet along a 40 feet wide roadway to the point of beginning and containing an area of 5.55 Acres. |

All as outlined in red on the map attached hereto, marked Exhibit "A" and by reference made a part hereof."

SECTION 2. This ordinance shall take effect upon its approval.

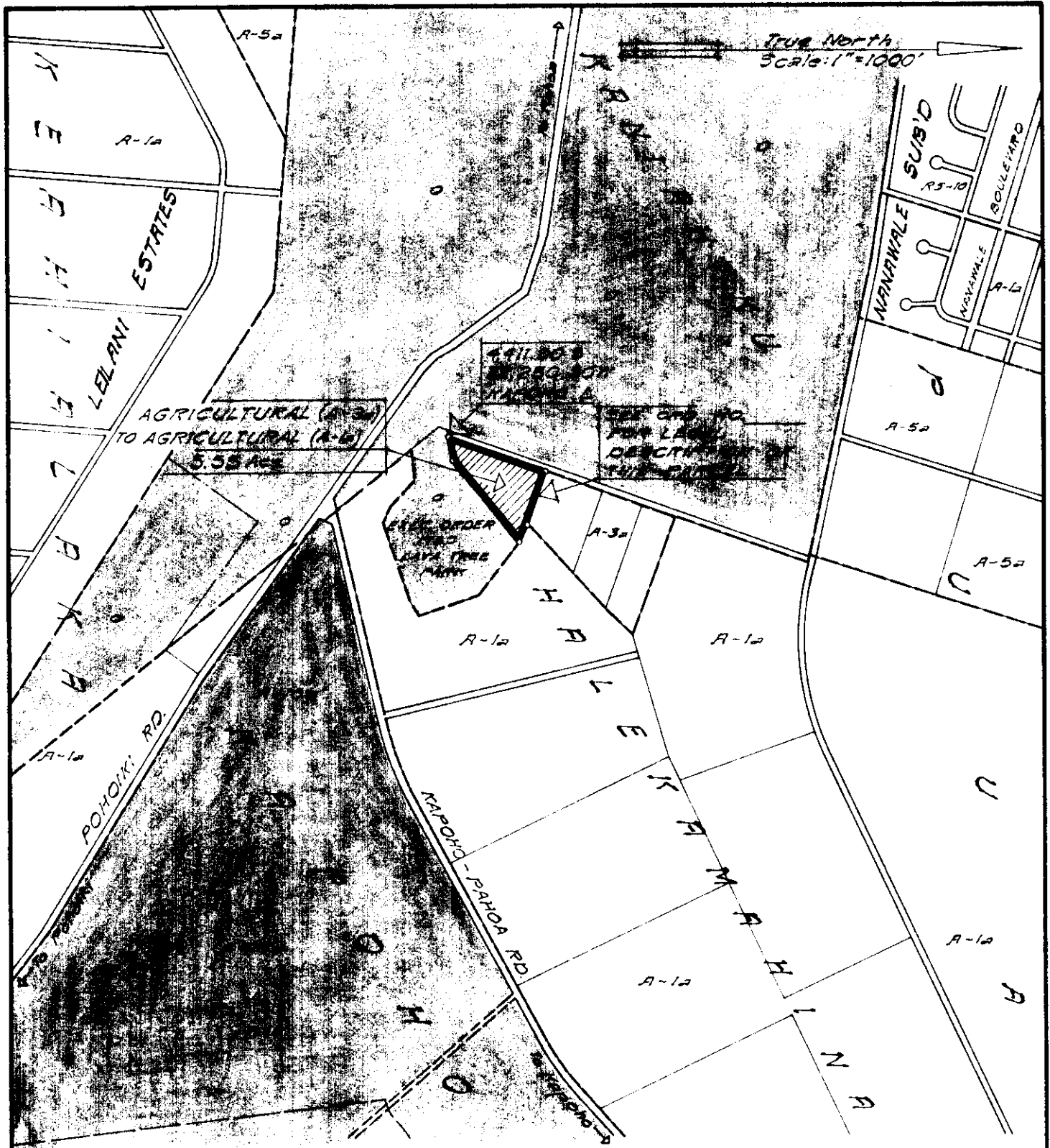
INTRODUCED BY:

  
Councilman, County of Hawaii

Hilo, Hawaii

Date of Introduction: August 11, 1971

Date of Adoption: August 25, 1971



## AMENDMENT TO THE COUNTY ZONING ORDINANCE

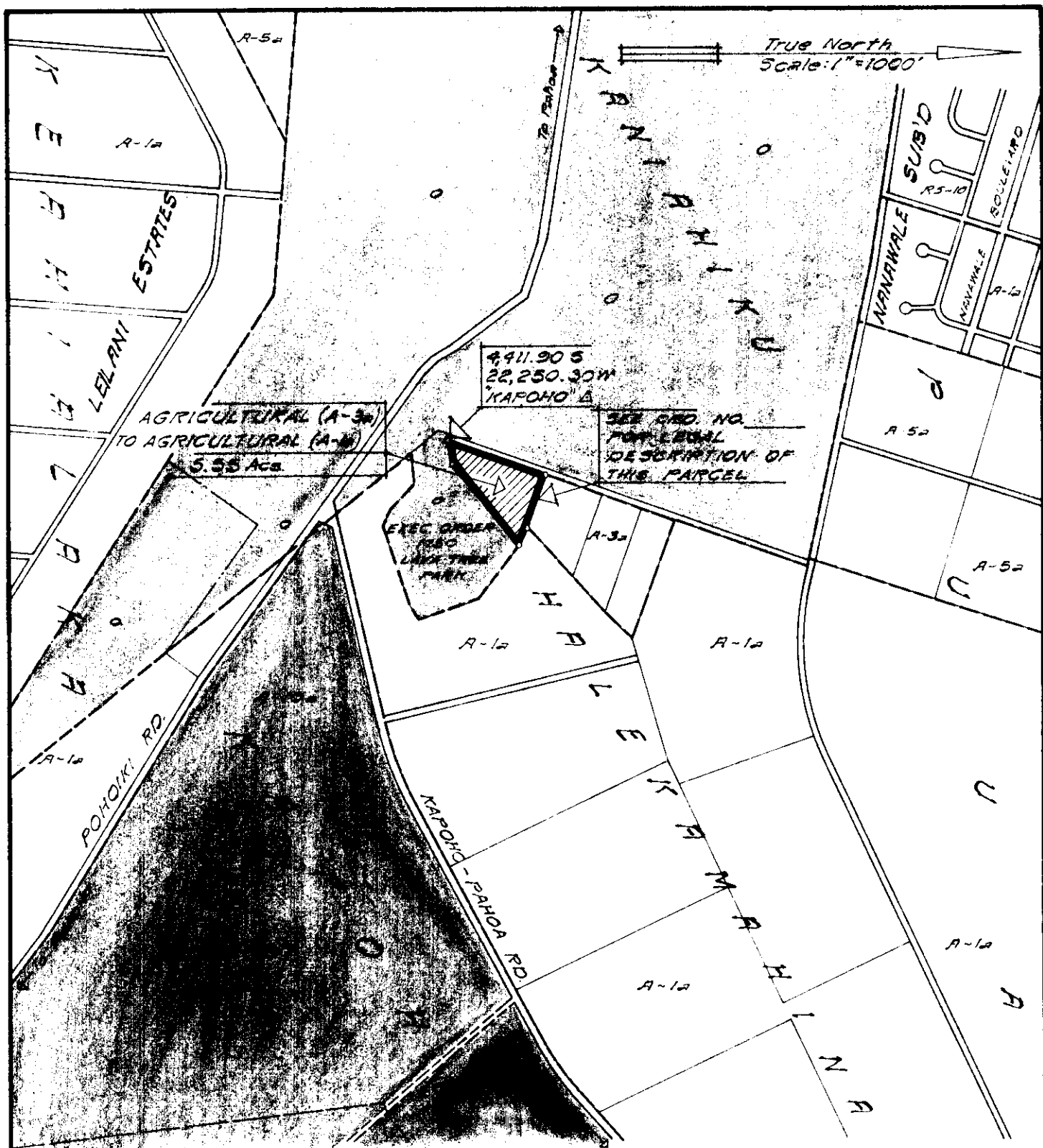
AMENDMENT NO. 3 OF SECTION 7.18, PUNA DISTRICT ZONE MAP, PORTION OF ORDINANCE NO. 111, CHANGING THE DISTRICT CLASSIFICATION FROM AGRICULTURAL (A-3a) TO AGRICULTURAL (A-1b) IN HALEKANIHINE, PUNA, HAWAII.

DATE OF PUBLIC HEARING: 7-1-71

DATE OF APPROVAL:

ORDINANCE NO.

PREPARED BY: PLANNING DEPARTMENT  
COUNTY OF HAWAII



## AMENDMENT TO THE COUNTY ZONING ORDINANCE

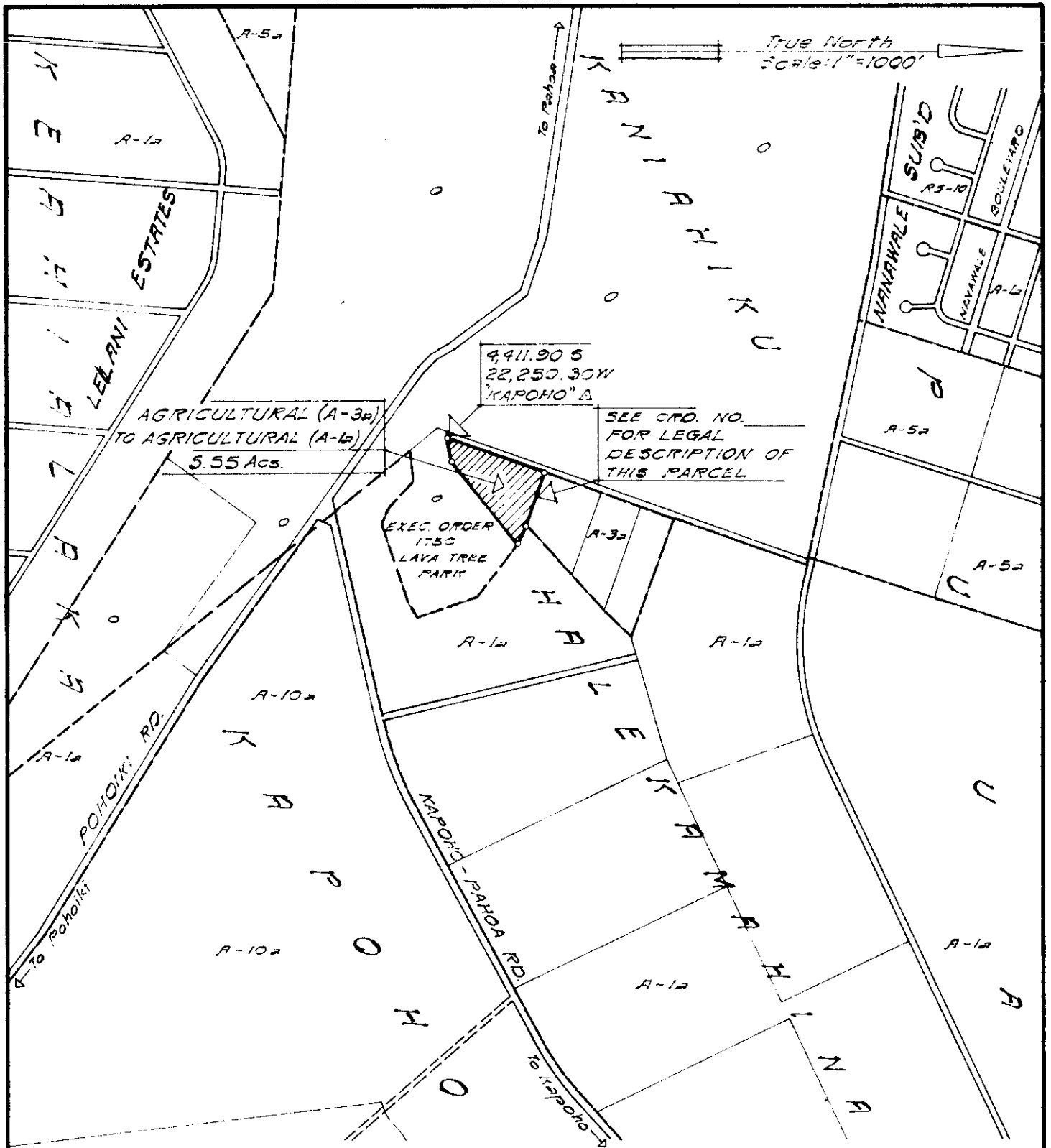
AMENDMENT NO. 3 OF SECTION 7.18, PUNA DISTRICT ZONE MAP, PORTION OF ORDINANCE NO. 111, CHANGING THE DISTRICT CLASSIFICATION FROM AGRICULTURAL (A-3a) TO AGRICULTURAL (A-1a) IN HALEKAMAHEUA, PUNA, HAWAII.

DATE OF PUBLIC HEARING: 7-1-71

DATE OF APPROVAL:

ORDINANCE NO.

PREPARED BY: PLANNING DEPARTMENT  
COUNTY OF HAWAII



## AMENDMENT TO THE COUNTY ZONING ORDINANCE

AMENDMENT NO. 3 OF SECTION 7.18, PUNA DISTRICT ZONE MAP, PORTION OF ORDINANCE NO. III, CHANGING THE DISTRICT CLASSIFICATION FROM AGRICULTURAL (A-3a) TO AGRICULTURAL (A-1b) IN HALEKAMAHINE, PUNA, HAWAII.

DATE OF PUBLIC HEARING: 7-1-71

DATE OF APPROVAL:

ORDINANCE NO.

PREPARED BY: PLANNING DEPARTMENT  
COUNTY OF HAWAII

Hilo, Hawaii

Date: August 11, 1971

FIRST READING			
	AYES	NOES	A/E
Carpenter			X
De Luz	X		
Edwards	X		
Greenwell	X		
Hisaoka	X		
Souza	X		
Yadao	X		
Yamada	X		
Chr Matayoshi	X		
	8	0	1

Publication Date: AUG 16 1971

Hilo, Hawaii

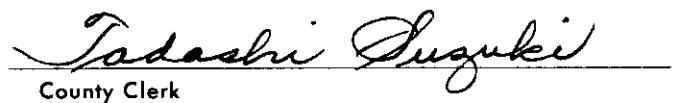
Date: August 25, 1971


SECOND & FINAL READING			
	AYES	NOES	A/E
Carpenter	X		
De Luz	X		
Edwards	X		
Greenwell	X		
Hisaoka	X		
Souza	X		
Yadao	X		
Yamada	X		
Chr Matayoshi	X		
	9	0	0

Publication Date: SEP 8 1971

We do hereby certify that the foregoing BILL was adopted by the County Council and published as indicated above.

  
 Council Chairman

  
 County Clerk

Approved/Disapproved this 31 day of  
August, 1971  
  
 Mayor, County of Hawaii

Bill No. 811  
 Reference: C-1531/PEDLC-59  
 M. B. No. 1200  
 Ord. No. 418

BILL NO. 811 - 1971

AN ORDINANCE AMENDING SECTION 7.18, THE PUNA DISTRICT ZONE MAP, ORDINANCE NO. 63 (ZONING ORDINANCE), REVISED ORDINANCES OF THE COUNTY OF HAWAII 1967, AS AMENDED, BY CHANGING THE DISTRICT CLASSIFICATION FROM AGRICULTURAL (A-3a) TO AGRICULTURAL (A-1a) IN HALEKAMAHINA, PUNA, HAWAII, COVERED BY TAX MAP KEY 1-4-01:42.

This Bill proposes to amend the Puna District Zone Map by changing the district classification from Agricultural 3 acre zone (A-3a) to Agricultural 1 acre zone (A-1a) in Halekamahina, Puna, Hawaii, containing an area of 5.559 acre of land located approximately  $2\frac{1}{2}$  miles outside of Pahoa near the Pahoa-Pohoiki-Kapoho Junction, adjacent to the Lava Tree Park in Halekamahina, Puna, Hawaii.

Date Introduced: August 11, 1971

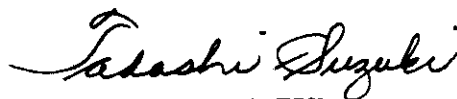
Copies of the foregoing Bill, in full, are on file in the Office of the County Clerk for use and examination by the public.

I hereby certify that the foregoing Bill passed first reading at the meeting of the County Council on August 11, 1971, by the following aye and no vote:


AYES: Councilmen De Luz, Edwards, Greenwell, Hisaoka, Souza, Yadao, Yamada and Chairman Matayoshi - 8.

NOES: None.

ABSENT AND EXCUSED: Councilman Carpenter - 1.



COUNTY CLERK  
COUNTY OF HAWAII



THE COUNTY OF HAWAII IS,  
AMENDED, BY CHANGING THE  
DISTRICT CLASSIFICATION FROM  
AGRICULTURAL (A-3a) TO  
AGRICULTURAL (A-1a) IN  
HALEKAMAHINA, PUNA, HAWAII,  
COVERED BY TAX MAP KEY 1-4-01:42.

This Bill proposes to amend the Puna District Zone Map by changing the district classification from Agricultural 3 acre zone (A-3a) to Agricultural 1 acre zone (A-1a) in Halekamahina, Puna, Hawaii, containing an area of 5.559 acre of land located approximately  $2\frac{1}{2}$  miles outside of Pahoa near the Pahoa-Pohoiki-Kapoho Junction, adjacent to the Lava Tree Park in Halekamahina, Puna, Hawaii.

Date Introduced: August 11, 1971

Copies of the foregoing Bill, in full, are on file in the Office of the County Clerk for use and examination by the public.

I hereby certify that the foregoing Bill passed first reading at the meeting of the County Council on August 11, 1971, by the following aye and no vote:

AYES: Councilmen De Luz, Edwards, Greenwell, Hisaoka, Souza, Yadao, Yamada and Chairman Matayoshi—8.

NOES: None.

ABSENT AND EXCUSED: Councilman Carpenter—1.

Tadashi Suzuki  
COUNTY CLERK  
COUNTY OF HAWAII

ORDINANCE NO. 418  
(Bill No. 811-1971)

AN ORDINANCE AMENDING SECTION 7.18, THE PUNA DISTRICT ZONE MAP, ORDINANCE NO. 63 (ZONING ORDINANCE), REVISED ORDINANCES OF THE COUNTY OF HAWAII 1967, AS AMENDED, BY CHANGING THE DISTRICT CLASSIFICATION FROM AGRICULTURAL (A-3a) TO AGRICULTURAL (A-1a) IN HALEKAMAHINA, PUNA, HAWAII, COVERED BY TAX MAP KEY 1-4-01:42.

Date Approved: August 25, 1971  
Date Effective: August 31, 1971

Copies of the foregoing Ordinance, in full, are on file in the Office of the County Clerk for use and examination by the public.

I hereby certify that the foregoing Ordinance passed second and final reading at the meeting of the County Council on August 25, 1971, by the following aye and no vote:

AYES: Councilmen Carpenter, De Luz, Edwards, Greenwell, Hisaoka, Souza, Yadao, Yamada and Chairman Matayoshi - 9.

NOES: None.

*Tadashi Suzuki*

COUNTY CLERK  
COUNTY OF HAWAII

AN ORDINANCE AMENDING SECTION 7.18, THE PUNA DISTRICT ZONE MAP, ORDINANCE NO. 63 (ZONING ORDINANCE), REVISED ORDINANCES OF THE COUNTY OF HAWAII 1967, AS AMENDED, BY CHANGING THE DISTRICT CLASSIFICATION FROM AGRICULTURAL (A-3a) TO AGRICULTURAL (A-1a) IN HALEKAMAHINA, PUNA, HAWAII, COVERED BY TAX MAP KEY 1-4-01:42.

Date Approved: August 25, 1971  
Date Effective: August 31, 1971

Copies of the foregoing Ordinance, in full, are on file in the Office of the County Clerk for use and examination by the public.

I hereby certify that the foregoing Ordinance passed second and final reading at the meeting of the County Council on August 25, 1971, by the following aye and no vote:

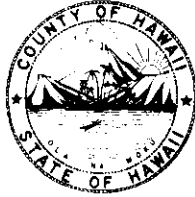
AYES: Councilmen Carpenter, De Luz, Edwards, Greenwell, Hisaoka, Souza, Yadao, Yamada and Chairman Matayoshi - 9.

NOES: None.

Tadashi Suzuki  
COUNTY CLERK  
COUNTY OF HAWAII



Tadashi Suzuki  
COUNTY CLERK



Robert Shioji  
DEPUTY COUNTY CLERK

**OFFICE OF THE COUNTY CLERK**

COUNTY OF HAWAII  
HILO, HAWAII 96720

Mayor Shunichi Kimura  
County of Hawaii  
Hilo, Hawaii

I hereby transmit Ordinance Bill No. 811 passed by  
the County Council on second and final reading.

*Tadashi Suzuki*  
COUNTY CLERK

Encl.

Dated: August 26, 1971