

COUNTY OF HAWAII - STATE OF HAWAII

ORDINANCE NO. 422

AN ORDINANCE AMENDING SECTION 7.03, THE SOUTH KONA ZONE MAP, ORDINANCE NO. 63 (ZONING ORDINANCE), REVISED ORDINANCES OF THE COUNTY OF HAWAII 1967, AS AMENDED, BY CHANGING THE DISTRICT CLASSIFICATION FROM AGRICULTURAL (A-1a) TO SINGLE FAMILY RESIDENTIAL (RS-7.5) IN KALAMAKUMU, SOUTH KONA, HAWAII, COVERED BY TAX MAP KEY 8-2-09:11.

BE IT ORDAINED BY THE COUNCIL OF THE COUNTY OF HAWAII:

SECTION 1. Section 7.03 of Ordinance No. 63 (Zoning Ordinance), Revised Ordinances of the County of Hawaii 1967, as amended, is hereby further amended by adding thereto the following subsection:

"7.03(f). The district classification of the following area situated at Kalamakumu, South Kona, Hawaii, shall be Single Family Residential (RS-7.5):

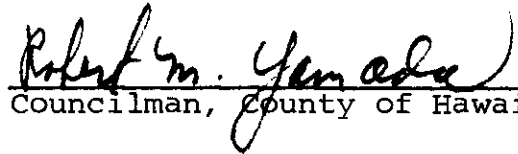
Beginning at the northwest corner of this lot and on the south side of the Mamalahoa Highway, the coordinates of said point of beginning referred to Government Survey Triangulation Station "LAE O KANONI" being 19,401.13 feet north and 4,492.72 feet east and running by azimuths measured clockwise from true south:

- | | | |
|----|----------|--|
| 1. | 288° 05' | 418.00 feet along the south side of Mamalahoa Highway; |
| 2. | 20° 22' | 154.20 feet along a stone wall; |
| 3. | 24° 36' | 170.90 feet along a stone wall; |
| 4. | 29° 16' | 119.10 feet along a stone wall; |
| 5. | 116° 37' | 218.00 feet along a stone wall; |
| 6. | 112° 31" | 159.00 feet along a stone wall; |
| 7. | 197° 38' | 163.40 feet along a stone wall; |
| 8. | 201° 12' | 241.50 feet along a stone wall to the point of beginning and containing an area of 3.88 acres. |

All as outlined in red on the map attached hereto, marked Exhibit "A," and by reference made a part hereof."

SECTION 2. This ordinance shall take effect upon its approval.

INTRODUCED BY:

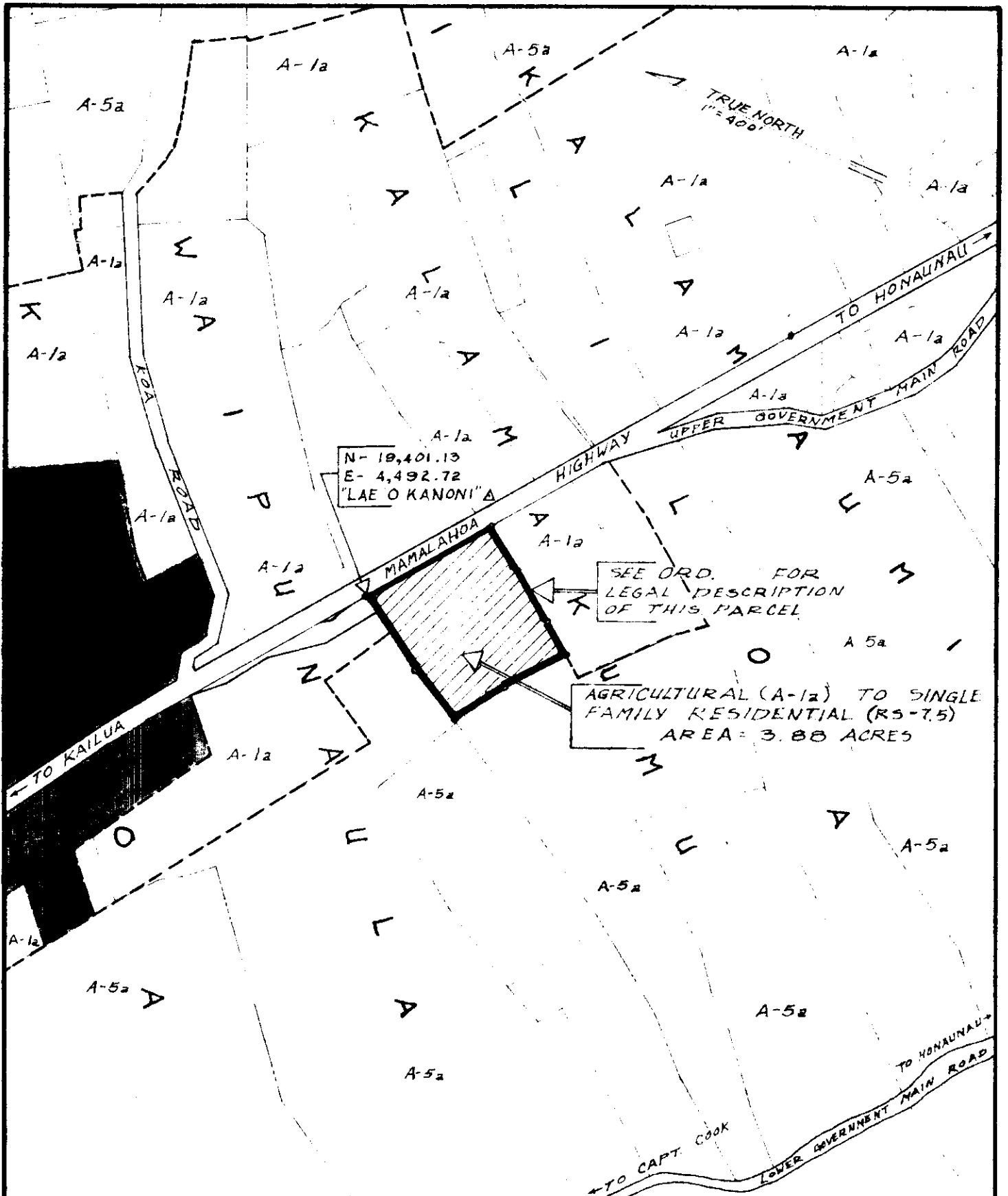


Councilman, County of Hawaii

Hilo, Hawaii

Date of Introduction: August 11, 1971

Date of Adoption: August 25, 1971



AMENDMENT TO THE COUNTY ZONING ORDINANCE

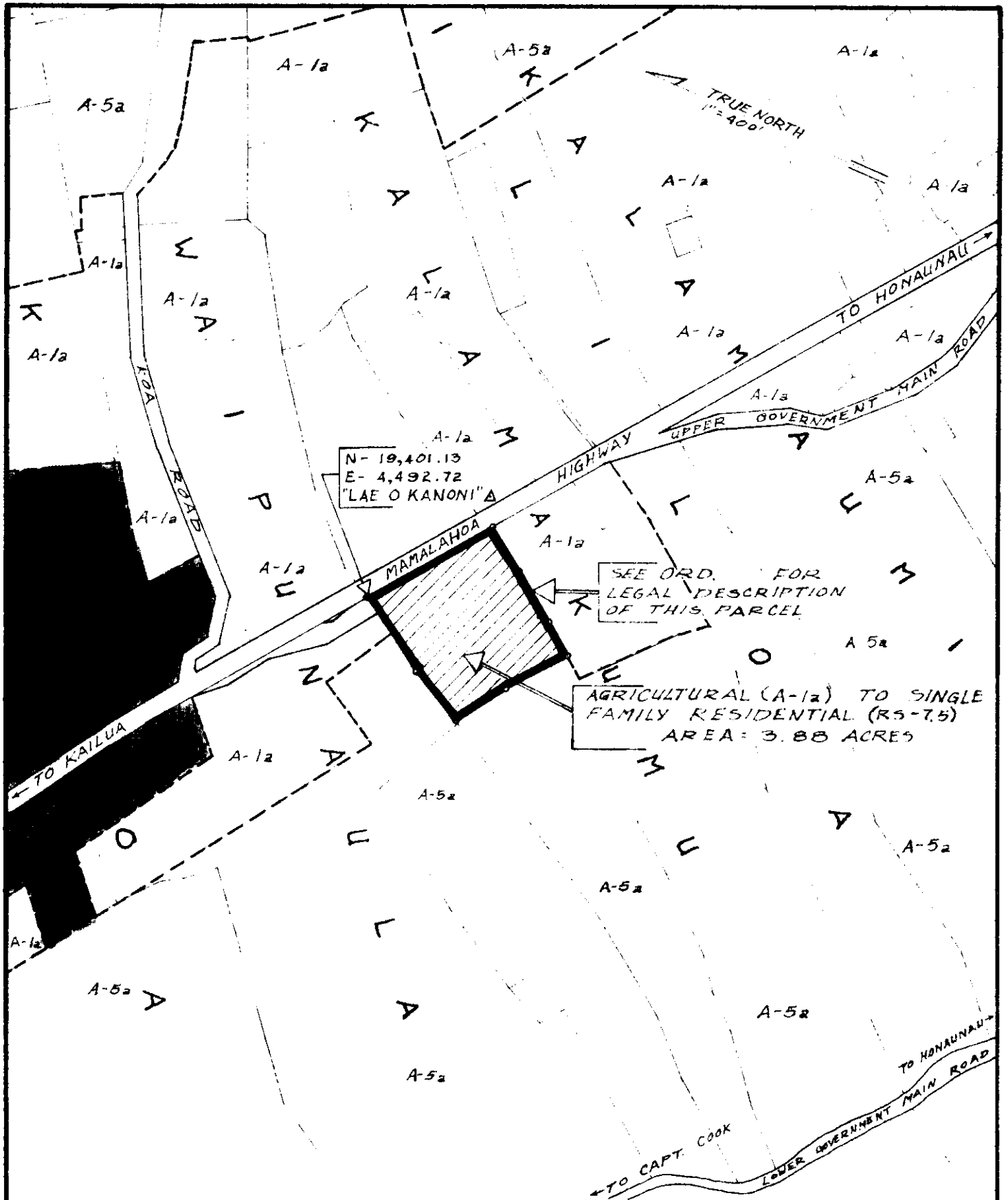
AMENDMENT NO. 6 OF SECTION 7.03, SOUTH KONA ZONE MAP, PORTION OF ORD. 74, CHANGING THE DISTRICT CLASSIFICATION FROM AGRICULTURAL (A-1a) TO SINGLE FAMILY RESIDENTIAL (RS-7.5) IN KALAMAKUMA, SOUTH KONA, HAWAII.

DATE OF PUBLIC HEARING: JULY 8, 1971

DATE OF APPROVAL:

ORDINANCE NO.

PREPARED BY: PLANNING DEPARTMENT
COUNTY OF HAWAII



AMENDMENT TO THE COUNTY ZONING ORDINANCE

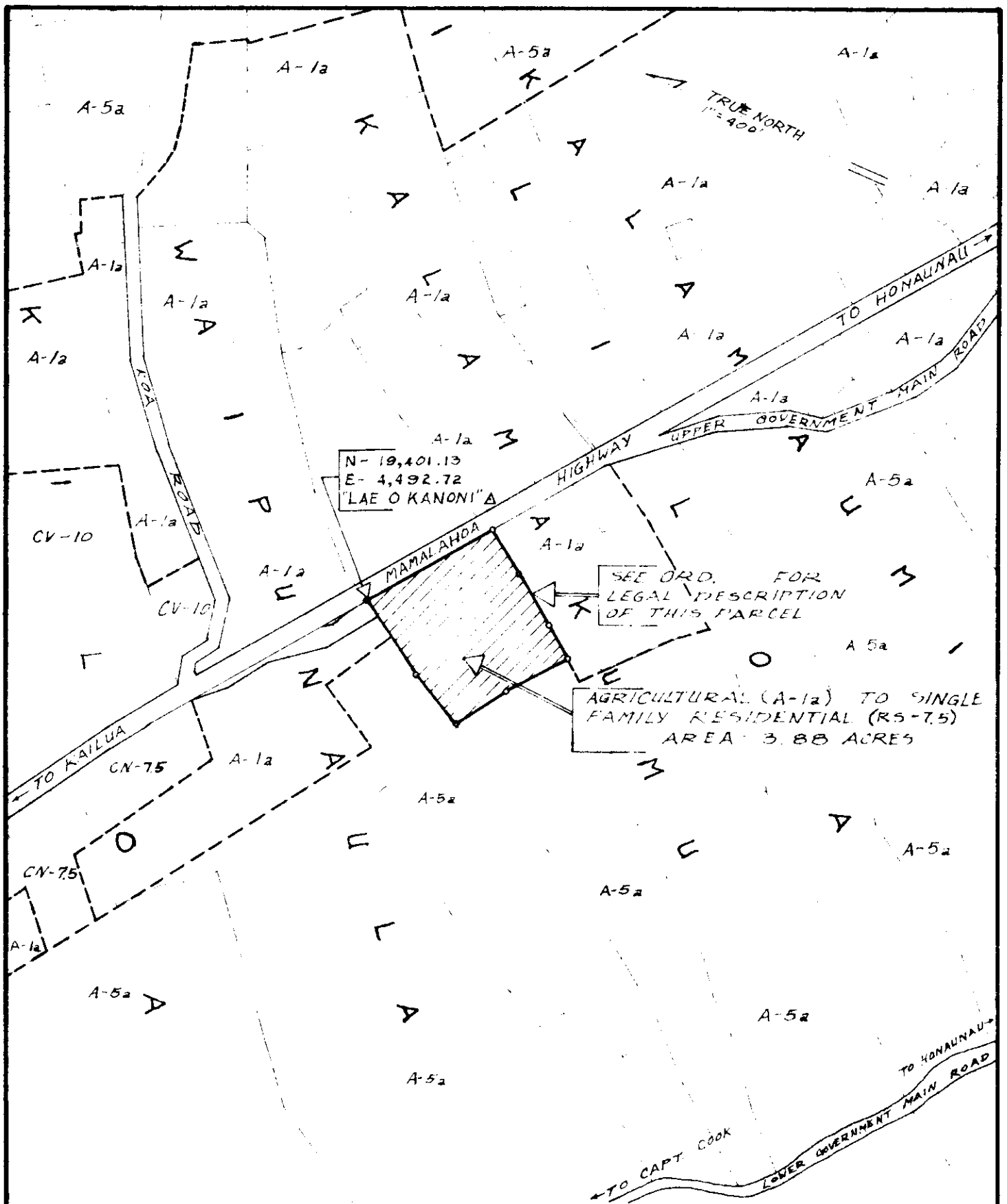
AMENDMENT NO. 6 OF SECTION 7.03, SOUTH KONA ZONE MAP, PORTION OF ORD. 74, CHANGING THE DISTRICT CLASSIFICATION FROM AGRICULTURAL (A-1a) TO SINGLE FAMILY RESIDENTIAL (RS-7.5) IN KALAMAKUMA, SOUTH KONA, HAWAII.

DATE OF PUBLIC HEARING: JULY 8, 1971

DATE OF APPROVAL:

ORDINANCE NO.

PREPARED BY: PLANNING DEPARTMENT
COUNTY OF HAWAII



AMENDMENT TO THE COUNTY ZONING ORDINANCE

AMENDMENT NO. 6 OF SECTION 7.03, SOUTH KONA ZONE MAP, PORTION OF ORD. 74, CHANGING THE DISTRICT CLASSIFICATION FROM AGRICULTURAL (A-1a) TO SINGLE FAMILY RESIDENTIAL (RS-7.5) IN KALAMAKUMA, SOUTH KONA, HAWAII.

DATE OF PUBLIC HEARING: JULY 8, 1971

DATE OF APPROVAL:

ORDINANCE NO.

PREPARED BY: PLANNING DEPARTMENT
COUNTY OF HAWAII

Hilo, Hawaii

Date: August 11, 1971

FIRST READING			
	AYES	NOES	A/E
Carpenter			X
De Luz	X		
Edwards	X		
Greenwell	X		
Hisaoka	X		
Souza	X		
Yadao	X		
Yamada	X		
Chr Matayoshi	X		
	8	0	1

AUG 16 1971

Publication Date: _____

Hilo, Hawaii


Date: August 25, 1971

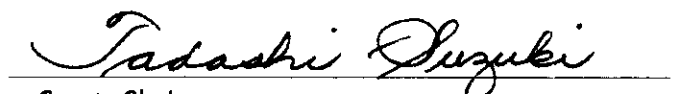
SECOND & FINAL READING			
	AYES	NOES	A/E
Carpenter	X		
De Luz	X		
Edwards	X		
Greenwell	X		
Hisaoka	X		
Souza	X		
Yadao	X		
Yamada	X		
Chr Matayoshi	X		
	9	0	0

SEP 8 1971

Publication Date: _____

We do hereby certify that the foregoing BILL was adopted by the County Council and published as indicated above.


 Council Chairman


 County Clerk

Approved/Disapproved this 31 day of
August, 1971


 Mayor, County of Hawaii

Bill No. 815
 Reference: C-1535/PEDLC-59
 M. B. No. 100-1000
 Ord. No. 422

BILL NO. 815 - 1971

AN ORDINANCE AMENDING SECTION 7.03, THE SOUTH KONA ZONE MAP, ORDINANCE NO. 63 (ZONING ORDINANCE), REVISED ORDINANCES OF THE COUNTY OF HAWAII 1967, AS AMENDED, BY CHANGING THE DISTRICT CLASSIFICATION FROM AGRICULTURAL (A-1a) TO SINGLE FAMILY RESIDENTIAL (RS-7.5) IN KALAMAKUMU, SOUTH KONA, HAWAII, COVERED BY TAX MAP KEY 8-2-09:11.

This Bill proposes to change the South Kona Zone Map, by changing the district classification from Agricultural 1 acre zone (A-1a) to Single Family Residential 7,500 sq. ft. zone (RS-7.5) in Kalamakumu, South Kona, Hawaii containing an area of 3.869 acres of land fronting Mamalahoa Highway (makai), approximately one-half mile south of the Kona Civic Center area, Kalamakumu, South Kona, Hawaii.

Date Introduced: August 11, 1971

Copies of the foregoing Bill, in full, are on file in the Office of the County Clerk for use and examination by the public.

I hereby certify that the foregoing Bill passed first reading at the meeting of the County Council on August 11, 1971, by the following aye and no vote:

AYES: Councilmen De Luz, Edwards, Greenwell, Hisaoka, Souza, Yadao, Yamada and Chairman Matayoshi - 8.

NOES: None.

ABSENT AND EXCUSED: Councilman Carpenter - 1.



COUNTY CLERK
COUNTY OF HAWAII

ORDINANCE), REVISED ORDINANCES OF THE COUNTY OF HAWAII 1967, AS AMENDED, BY CHANGING THE DISTRICT CLASSIFICATION FROM AGRICULTURAL (A-1a) TO SINGLE FAMILY RESIDENTIAL (RS-7.5) IN KALAMAKUMU, SOUTH KONA, HAWAII, COVERED BY TAX MAP KEY 8-2-09:11.

This Bill proposes to change the South Kona Zone Map, by changing the district classification from Agricultural 1 acre zone (A-1a) to Single Family Residential 7,500 sq. ft. zone (RS-7.5) in Kalamakumu, South Kona, Hawaii containing an area of 3.869 acres of land fronting Mamalahoa Highway (makai), approximately one-half mile south of the Kona Civic Center area, Kalamakumu, South Kona, Hawaii.

Date Introduced: August 11, 1971

Copies of the foregoing Bill, in full, are on file in the Office of the County Clerk for use and examination by the public.

I hereby certify that the foregoing Bill passed first reading at the meeting of the County Council on August 11, 1971, by the following aye and no vote:

AYES: Councilmen De Luz, Edwards, Greenwell, Hisaoka, Souza, Yadao, Yamada and Chairman Matayoshi—8.

NOES: None.

ABSENT AND EXCUSED: Councilman Carpenter—1.

Tadashi Suzuki
COUNTY CLERK
COUNTY OF HAWAII
(896—Hawaii Tribune-Herald: Aug. 18, 1971)

ORDINANCE NO. 422
(Bill No. 815-1971)

AN ORDINANCE AMENDING SECTION 7.03, THE SOUTH KONA ZONE MAP, ORDINANCE NO. 63 (ZONING ORDINANCE), REVISED ORDINANCES OF THE COUNTY OF HAWAII 1967, AS AMENDED, BY CHANGING THE DISTRICT CLASSIFICATION FROM AGRICULTURAL (A-1a) TO SINGLE FAMILY RESIDENTIAL (RS-7.5) IN KALAMAKUMU, SOUTH KONA, HAWAII, COVERED BY TAX MAP KEY 8-2-09:11.

Date Approved: August 25, 1971
Date Effective: August 31, 1971

Copies of the foregoing Ordinance, in full, are on file in the Office of the County Clerk for use and examination by the public.

I hereby certify that the foregoing Ordinance passed second and final reading at the meeting of the County Council on August 25, 1971, by the following aye and no vote:

AYES: Councilmen Carpenter, De Luz, Edwards, Greenwell, Hisaoka, Souza, Yadao, Yamada and Chairman Matayoshi - 9.

NOES: None.



COUNTY CLERK
COUNTY OF HAWAII



7.03, THE SOUTH KONA ZONE MAP, ORDINANCE NO. 63 (ZONING ORDINANCE), REVISED ORDINANCES OF THE COUNTY OF HAWAII 1967, AS AMENDED, BY CHANGING THE DISTRICT CLASSIFICATION FROM AGRICULTURAL (A-1a) TO SINGLE FAMILY RESIDENTIAL (RS-7.5) IN KALAMAKUMU, SOUTH KONA, HAWAII, COVERED BY TAX MAP KEY 8-2-09:11.

Date Approved: August 25, 1971
Date Effective: August 31, 1971

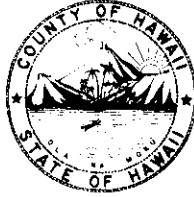
Copies of the foregoing Ordinance, in full, are on file in the Office of the County Clerk for use and examination by the public.

I hereby certify that the foregoing Ordinance passed second and final reading at the meeting of the County Council on August 25, 1971, by the following aye and no vote:

AYES: Councilmen Carpenter, De Luz, Edwards, Greenwell, Hisaoka, Souza, Yadao, Yamada and Chairman Matayoshi - 9.

NOES: None.
TADASHI SUZUKI,
COUNTY CLERK
COUNTY OF HAWAII
(1987-Hawaii Tribune-Herald: Sept. 8, 1971.)

Tadashi Suzuki
COUNTY CLERK



Robert Shioji
DEPUTY COUNTY CLERK

OFFICE OF THE COUNTY CLERK

COUNTY OF HAWAII
HILO, HAWAII 96720

Mayor Shunichi Kimura
County of Hawaii
Hilo, Hawaii

I hereby transmit Ordinance Bill No. 815 passed by
the County Council on second and final reading.

Tadashi Suzuki
COUNTY CLERK

Encl.

Dated: August 26, 1971