

COUNTY OF HAWAII - STATE OF HAWAII

ORDINANCE NO. 531

AN ORDINANCE AMENDING SECTION 7.09, THE KAMUELA ZONE MAP, ORDINANCE NO. 63 (ZONING ORDINANCE), REVISED ORDINANCES OF THE COUNTY OF HAWAII 1967, AS AMENDED, BY CHANGING THE DISTRICT CLASSIFICATION FROM LIMITED INDUSTRIAL (ML-20) TO VILLAGE COMMERCIAL (CV-7.5) AT WAIKOLOA, SOUTH KOHALA, HAWAII, COVERED BY TAX MAP KEY 6-7-02:PORTION OF 17.

BE IT ORDAINED BY THE COUNCIL OF THE COUNTY OF HAWAII:

SECTION 1. Section 7.09 of Ordinance No. 63 (Zoning Ordinance), Revised Ordinances of the County of Hawaii 1967, as amended, is hereby further amended by adding thereto the following subsection:

"7.09 (e). The district classification of the following area situated at Waikoloa, South Kohala, Hawaii, shall be Village Commercial (CV-7.5):

Beginning at the East corner of this parcel of land on the boundary line of the lands of Waikoloa and Puukapu, the coordinates of which referred to Government Survey Triangulation Station "WEST BASE" being 2,685.79 feet South and 833.20 feet West and running by azimuths measured clockwise from true South:

1. 25<sup>o</sup> 48' 99.72 feet along Deed: Hawaiian Homes Commission to Richard Smart, dated July 7, 1956, Liber 3138, Page 426 (Land Office Deed 13,719);
2. 70<sup>o</sup> 05' 370.00 feet along Grant 5978 to Kahoochanohano and remainder of Land Commission Award 8521-B, Apana 1 to G. D. Hueu;
3. 150<sup>o</sup> 30' 614.03 feet along remainder of Land Commission Award 8521-B, Apana 1 to G. D. Hueu;
4. 235<sup>o</sup> 00' 217.11 feet along remainder of Land Commission Award 8521-B, Apana 1 to G. D. Hueu;
5. 310<sup>o</sup> 40' 680.00 feet along remainder of Land Commission Award 8521-B, Apana 1 to G. D. Hueu to the point of beginning and containing a net area of 214,080 square feet after excluding and deducting the 75.00 feet by 100.00 feet Gas Holder Station Lot (Tax Map Key 6-7-02-34, 3rd Division).

"All as outlined in red on the map attached hereto, marked Exhibit "A" and by reference made a part hereof."

SECTION 2. Section 1 of this ordinance shall take effect forthwith upon the condition that the owner or lessee of the subject area be responsible for securing a building permit and beginning construction of the proposed building within one (1) year from the date of approval of the change of zone. Construction is defined as the actual placing of construction materials in their permanent position and fastened in a permanent manner. Should this condition not be met, action may be taken to rezone the land to an appropriate zoning classification.

SECTION 3. In the event that any portion of this ordinance is declared invalid, such invalidity shall not affect the other parts of this ordinance.

SECTION 4. This ordinance shall take effect upon its approval.

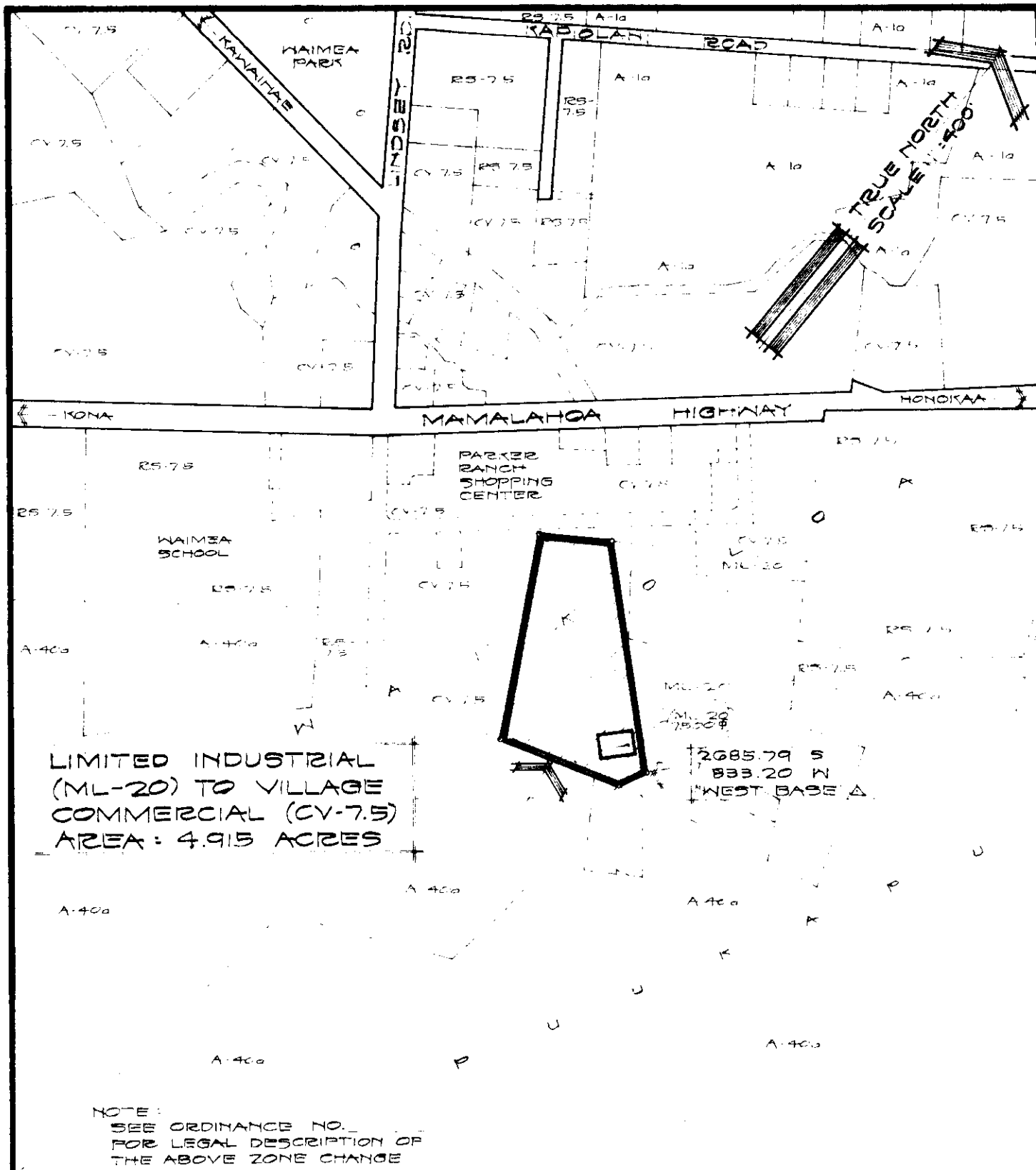
INTRODUCED BY:

  
Councilman, County of Hawaii

Hilo, Hawaii

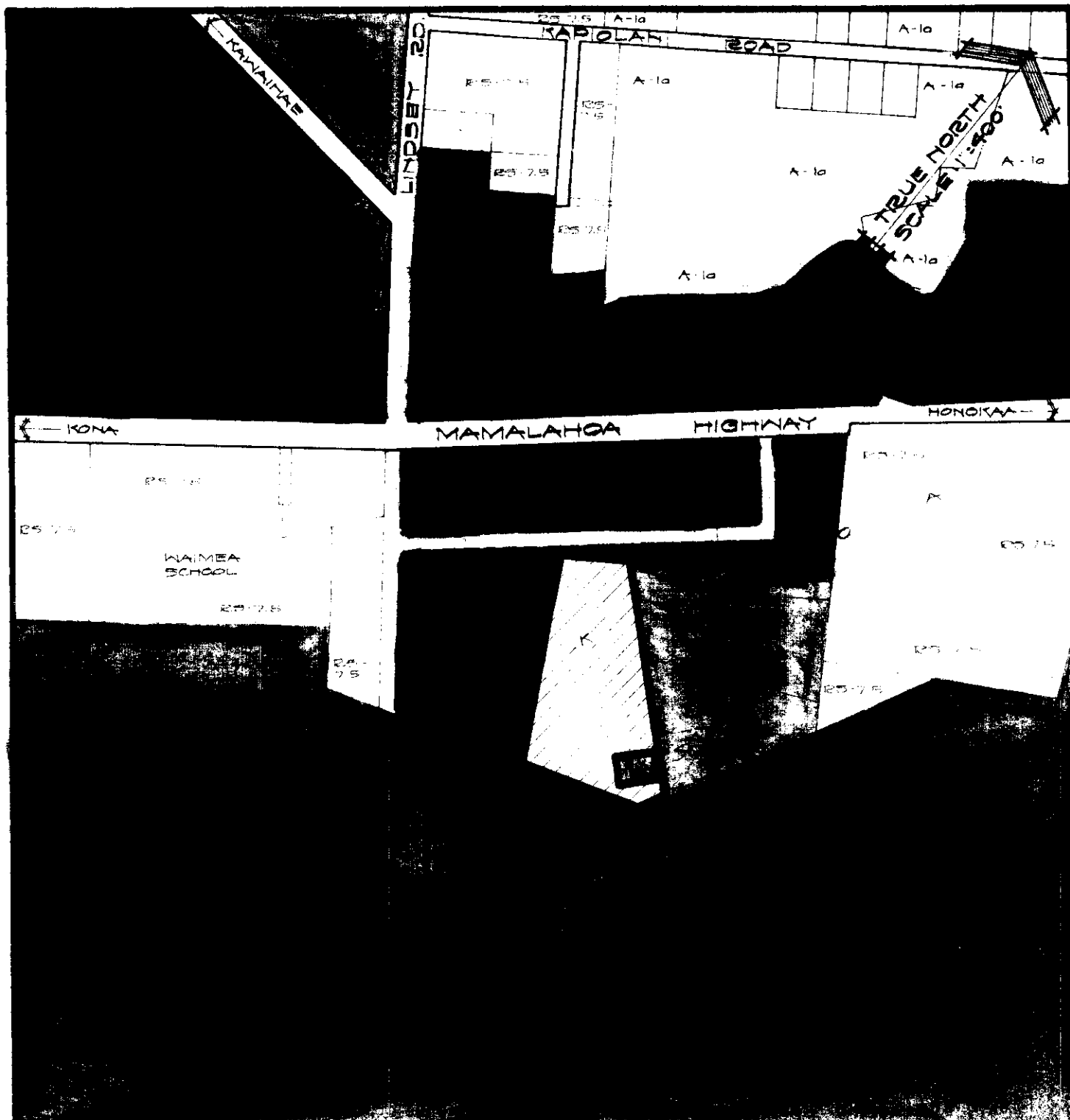
Date of Introduction: October 11, 1972

Date of Adoption: October 25, 1972



**AMENDMENT TO THE COUNTY ZONING ORDINANCE**  
 AMENDMENT NO. 5 OF SECTION 7.09, THE KAMUELA  
 ZONE MAP, PORTION OF ORDINANCE NO. 109, CHANGING  
 THE DISTRICT CLASSIFICATION FROM LIMITED INDUST-  
 RIAL (ML-20) TO VILLAGE COMMERCIAL (CV-7.5) AT  
 WAIKOLOA, SOUTH KOHALA, HAWAII.

DATE OF PUBLIC HEARING: SEPT. 14, 1972  
 DATE OF APPROVAL:  
 ORDINANCE NO.  
 PREPARED BY: PLANNING DEPARTMENT  
 COUNTY OF HAWAII



NOTE:  
 SEE ORDINANCE NO. \_\_\_\_\_  
 FOR LEGAL DESCRIPTION OF  
 THE ABOVE ZONE CHANGE

## AMENDMENT TO THE COUNTY ZONING ORDINANCE

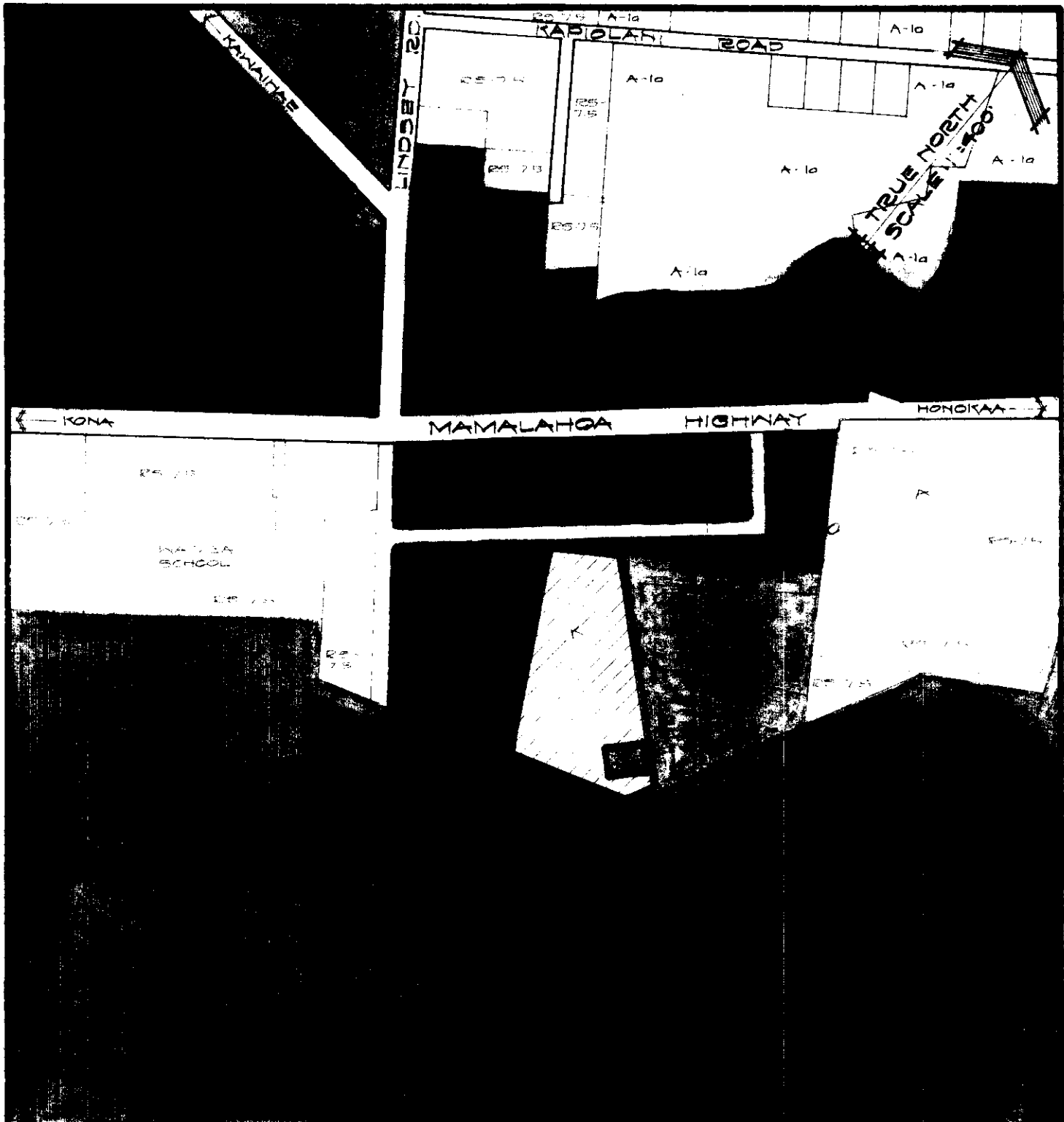
AMENDMENT NO. 5 OF SECTION 7.09, THE KAMUELA ZONE MAP, PORTION OF ORDINANCE NO. 109, CHANGING THE DISTRICT CLASSIFICATION FROM LIMITED INDUSTRIAL (ML-20) TO VILLAGE COMMERCIAL (CV-7.5) AT WAIKOLOA, SOUTH KOHALA, HAWAII.

DATE OF PUBLIC HEARING: SEPT. 14, 1972  
 DATE OF APPROVAL:  
 ORDINANCE NO.  
 PREPARED BY: PLANNING DEPARTMENT  
 COUNTY OF HAWAII

TMK: 6-7-02: FOR 17

11 SEPT. 1972

EXHIBIT "A"



NOTE:  
 SEE ORDINANCE NO. \_\_\_\_\_  
 FOR LEGAL DESCRIPTION OF  
 THE ABOVE ZONE CHANGE

**AMENDMENT TO THE COUNTY ZONING ORDINANCE**  
 AMENDMENT NO. 5 OF SECTION 7.09, THE KAMUELA  
 ZONE MAP, PORTION OF ORDINANCE NO. 109, CHANGING  
 THE DISTRICT CLASSIFICATION FROM LIMITED INDUST-  
 RIAL (ML-20) TO VILLAGE COMMERCIAL (CV-7.5) AT  
 WAIKOLOA, SOUTH KOHALA, HAWAII.

DATE OF PUBLIC HEARING: SEPT. 14, 1972  
 DATE OF APPROVAL:  
 ORDINANCE NO.  
 PREPARED BY: PLANNING DEPARTMENT  
 COUNTY OF HAWAII

Hilo, Hawaii  
 Date: October 11, 1972

FIRST READING			
	AYES	NOES	A/E
Carpenter	X		
De Luz	X		
Edwards	X		
Greenwell	X		
Hisaoka	X		
Souza	X		
Yadao	X		
Yamada	X		
Chr Matayoshi	X		
	9	0	0

Publication Date: October 17, 1972

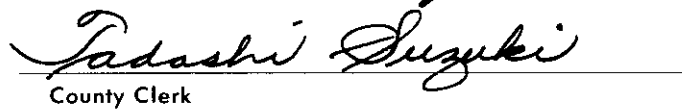
Hilo, Hawa.  
 Date: October 25, 1972

SECOND & FINAL READING			
	AYES	NOES	A/E
Carpenter	X		
De Luz	X		
Edwards	X		
Greenwell	X		
Hisaoka	X		
Souza	X		
Yadao	X		
Yamada	X		
Chr Matayoshi	X		
	9	0	0

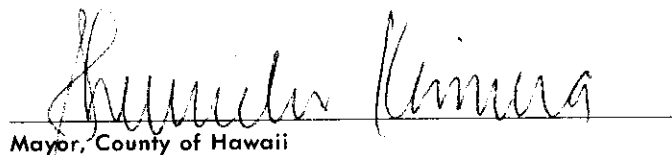
Publication Date: November 7, 1972

We do hereby certify that the foregoing BILL was adopted by the County Council and published as indicated above.

  
 Council Chairman

  
 County Clerk

Approved/Disapproved this 2nd day of  
November, 1972

  
 Mayor, County of Hawaii

Bill No. 931  
 Reference: C-2136/PEDLC-88  
 M.B. No. 1995, 2004  
 ORD. No. 534

Bill No. 931 - 1972

AN ORDINANCE AMENDING SECTION 7.09, THE KAMUELA ZONE MAP, ORDINANCE NO. 63 (ZONING ORDINANCE), REVISED ORDINANCES OF THE COUNTY OF HAWAII 1967, AS AMENDED, BY CHANGING THE DISTRICT CLASSIFICATION FROM LIMITED INDUSTRIAL (ML-20) TO VILLAGE COMMERCIAL (CV-7.5) AT WAIKOLOA, SOUTH KOHALA, HAWAII, COVERED BY TAX MAP KEY 6-7-02:PORTION OF 17.

This Bill proposes to amend the Kamuela Zone Map by changing the district classification of land from limited industrial (ML-20) to village commercial (CV-7.5) zoned district at Waikoloa, South Kohala, Hawaii.

Date Introduced: October 11, 1972

Copies of the foregoing Bill, in full, are on file in the Office of the County Clerk for use and examination by the public.

---

I hereby certify that the foregoing Bill passed first reading at the meeting of the County Council on October 11, 1972, by the following aye and no vote:

AYES: Councilmen Carpenter, De Luz, Edwards, Greenwell, Hisaoka, Souza, Yadao, Yamada and Chairman Matayoshi - 9.

NOES: None.



COUNTY CLERK  
COUNTY OF HAWAII

AN ORDINANCE AMENDING SECTION 7.09, THE KAMUELA ZONE MAP, ORDINANCE NO. 63 (ZONING ORDINANCE), REVISED ORDINANCES OF THE COUNTY OF HAWAII 1967, AS AMENDED, BY CHANGING THE DISTRICT CLASSIFICATION FROM LIMITED INDUSTRIAL (ML-20) TO VILLAGE COMMERCIAL (CV-7.5) AT WAIKOLOA, SOUTH KOHALA, HAWAII, COVERED BY TAX MAP KEY 6-7-02:PORTION OF 17.

This Bill proposes to amend the Kamuela Zone Map by changing the district classification of land from limited industrial (ML-20) to village commercial (CV-7.5) zoned district at Waikoloa, South Kohala, Hawaii.

Date Introduced: October 11, 1972

Copies of the foregoing Bill, in full, are on file in the Office of the County Clerk for use and examination by the public.

I hereby certify that the foregoing Bill passed first reading at the meeting of the County Council on October 11, 1972, by the following aye and no vote:

AYES: Councilmen Carpenter, De Luz, Edwards, Greenwell, Hisaoka, Souza, Yadao, Yamada and Chairman Matayoshi - 9.

NOES: None.

Tadashi Suzuki  
COUNTY CLERK  
COUNTY OF HAWAII

ORDINANCE NO. 534  
(Bill No. 931-1972)

AN ORDINANCE AMENDING SECTION 7.09, THE KAMUELA ZONE MAP, ORDINANCE NO. 63 (ZONING ORDINANCE), REVISED ORDINANCES OF THE COUNTY OF HAWAII 1967, AS AMENDED, BY CHANGING THE DISTRICT CLASSIFICATION FROM LIMITED INDUSTRIAL (ML-20) TO VILLAGE COMMERCIAL (CV-7.5) AT WAIKOLOA, SOUTH KOHALA, HAWAII, COVERED BY TAX MAP KEY 6-7-02:PORTION OF 17.

Date Approved: October 25, 1972  
Date Effective: November 2, 1972

Copies of the foregoing Ordinance, in full, are on file in the Office of the County Clerk for use and examination by the public.

---

I hereby certify that the foregoing Ordinance passed second and final reading at the meeting of the County Council on October 25, 1972, by the following aye and no vote:

AYES: Councilmen Carpenter, De Luz, Edwards, Greenwell, Hisaoka, Souza, Yadao, Yamada and Chairman Matayoshi - 9.

NOES: None.



COUNTY CLERK  
COUNTY OF HAWAII

ORDINANCE NO. 534  
(BILL NO. 931-1972)  
AN ORDINANCE AMENDING SECTION 7.09, THE KAMUELA ZONE MAP, ORDINANCE NO. 63 (ZONING ORDINANCE), REVISED ORDINANCES OF THE COUNTY OF HAWAII 1967, AS AMENDED, BY CHANGING THE DISTRICT CLASSIFICATION FROM LIMITED INDUSTRIAL (ML-20) TO VILLAGE COMMERCIAL (CV-7.5) AT WAIKOLOA, SOUTH KOHALA, HAWAII, COVERED BY TAX MAP KEY 6-7-02:PORTION OF 17.

Date Approved: October 25, 1972  
Date Effective: November 2, 1972

Copies of the foregoing Ordinance, in full, are on file in the Office of the County Clerk for use and examination by the public.

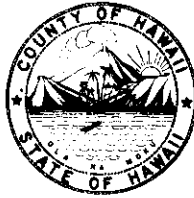
I hereby certify that the foregoing Ordinance passed second and final reading at the meeting of the County Council on October 25, 1972, by the following aye and no vote:

AYES: Councilmen Carpenter, De Luz, Edwards, Greenwell, Hisaoka, Souza, Yadao, Yamada and Chairman Matayoshi—9.  
NOES: None.

Tadashi Suzuki  
COUNTY CLERK  
COUNTY OF HAWAII



Tadashi Suzuki  
COUNTY CLERK



Robert Shioji  
DEPUTY COUNTY CLERK

**OFFICE OF THE COUNTY CLERK**  
COUNTY OF HAWAII  
HILO, HAWAII 96720

Mayor Shunichi Kimura  
County of Hawaii  
Hilo, Hawaii

I hereby transmit Ordinance Bill No. 931 passed by  
the County Council on second and final reading.

*Tadashi Suzuki*  
COUNTY CLERK

Encl.

Dated: October 25, 1972