

COUNTY OF HAWAII - STATE OF HAWAII

538

ORDINANCE NO. _____

AN ORDINANCE AMENDING SECTION 7.16, THE OOKALA ZONE MAP, ORDINANCE NO. 63 (ZONING ORDINANCE), REVISED ORDINANCE OF THE COUNTY OF HAWAII 1967, AS AMENDED, BY CHANGING THE DISTRICT CLASSIFICATION FROM SINGLE FAMILY RESIDENTIAL (RS-10) TO GENERAL INDUSTRIAL (MG-1a) AT OOKALA, NORTH HILO, HAWAII, COVERED BY TAX MAP KEY 3-9-01:PORTION OF 6.

BE IT ORDAINED BY THE COUNCIL OF THE COUNTY OF HAWAII:

SECTION 1. Section 7.16 of Ordinance No. 63 (Zoning Ordinance), Revised Ordinances of the County of Hawaii 1967, as amended, is hereby further amended by adding thereto the following subsection:

"7.16 (a) The district classification of the following area situated at Ookala, North Hilo, Hawaii, shall be General Industrial (MG-1a):

Beginning at the west corner of this parcel of land, and on the north corner of former Ookala School Lot, the coordinates of said point of beginning referred to Government Survey Triangulation Station "HUMUULA" being 6158.90 feet North and 2288.64 feet West, thence running by azimuths measured clockwise from True South:

1. 207° 35' 96.11 feet along the remainder of Grant 2467 to Hanehane and Kaawapuupuole;
2. 293° 00' 166.00 feet along the remainder of Grant 2467 to Hanehane and Kaawapuupuole;
3. 27° 35' 109.37 feet along the remainder of Grant 2467 to Hanehane and Kaawapuupuole;
4. 117° 35' 165.47 feet along remainder of former Ookala School Lot to the point of beginning and containing an area of 17,000 square feet.

"All as outlined in red on the map attached hereto, marked Exhibit "A" and by reference made a part hereof."

SECTION 2. This ordinance shall take effect upon its approval.

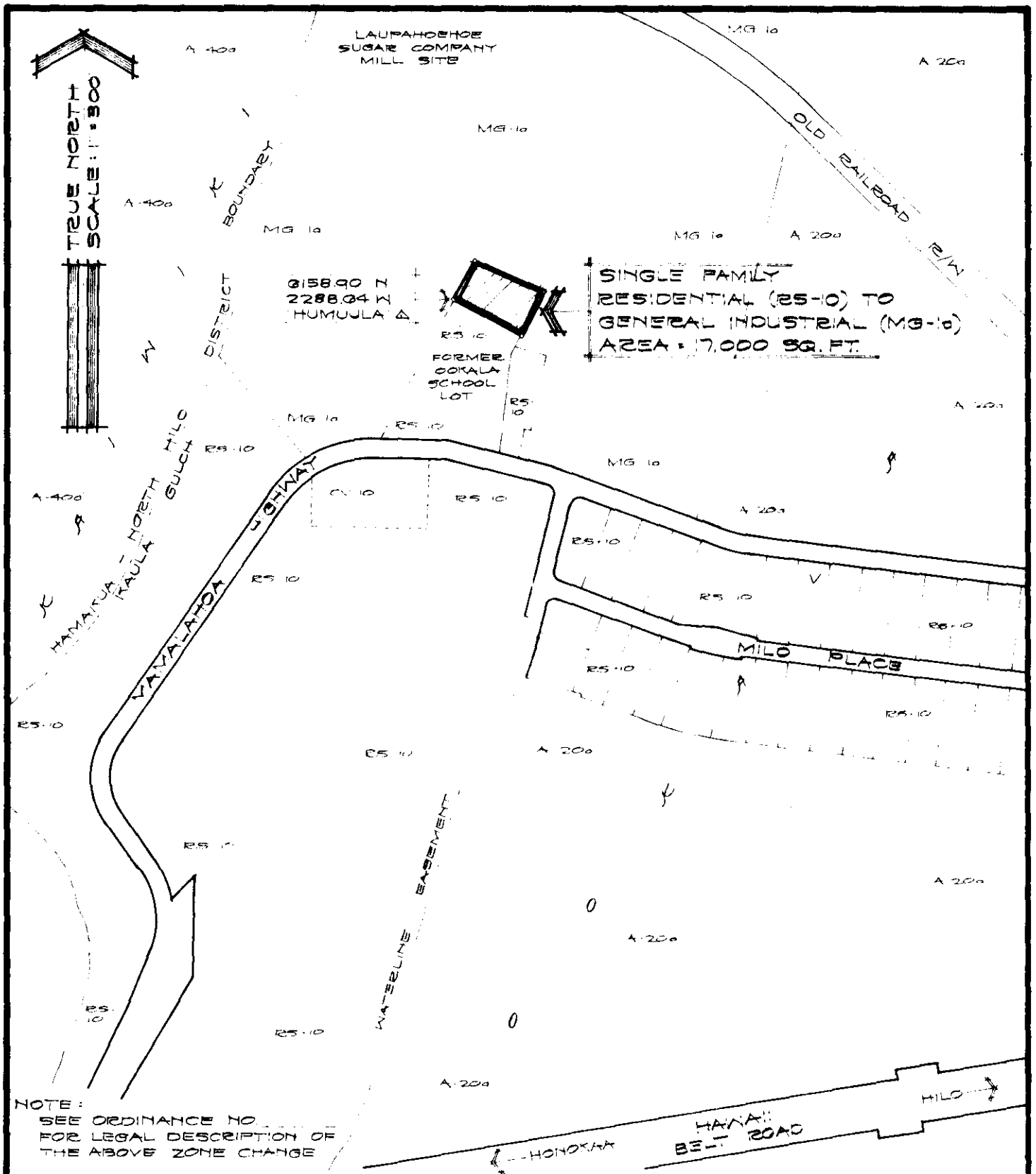
INTRODUCED BY:

Robert M. Yamada
Councilman, County of Hawaii

Hilo, Hawaii

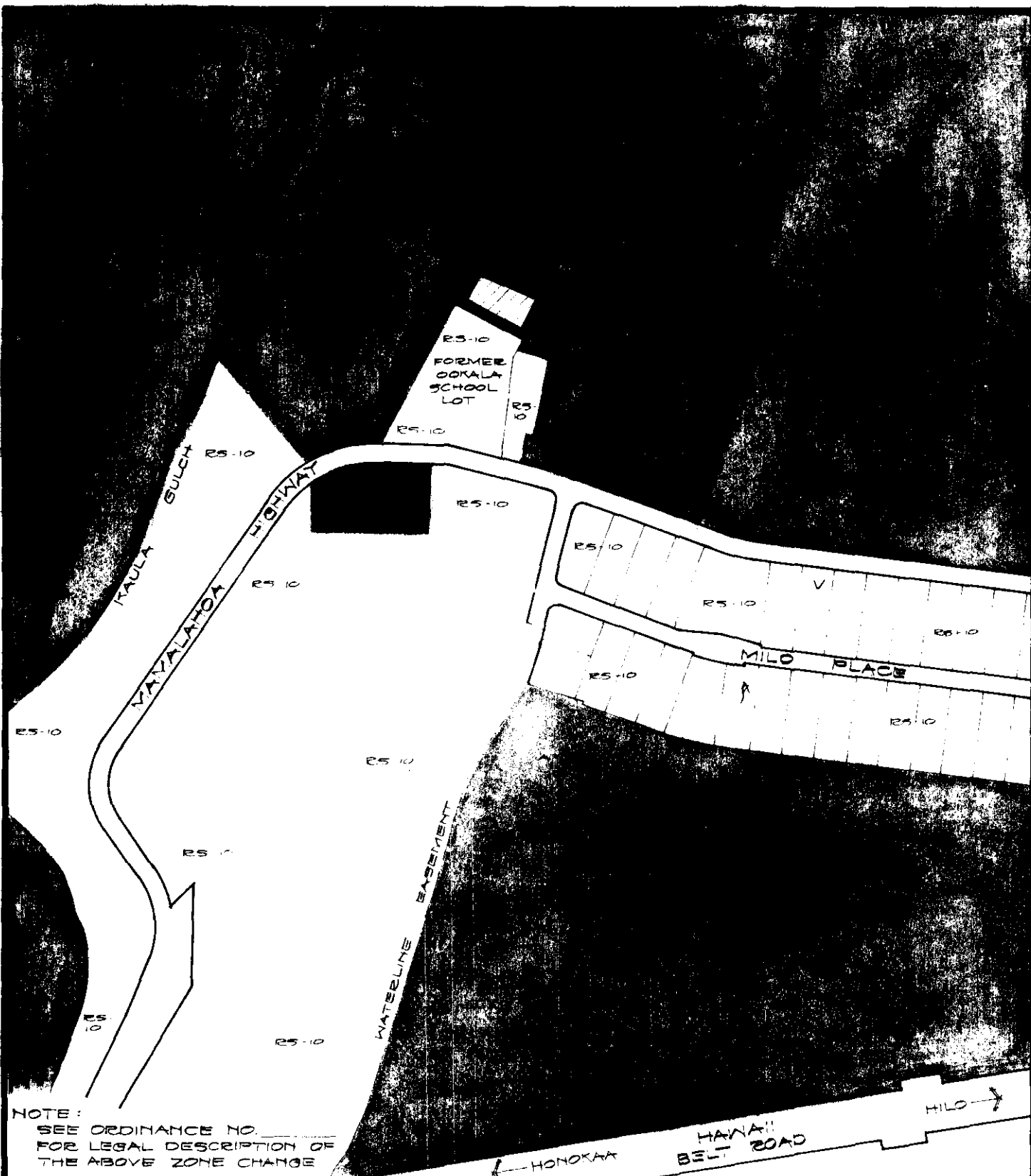
Date of Introduction: October 25, 1972

Date of Adoption: November 9, 1972



AMENDMENT TO THE COUNTY ZONING ORDINANCE
 AMENDMENT NO. 1 OF SECTION 7.16, THE OOKALA ZONE MAP, PORTION OF ORDINANCE NUMBER 110, CHANGING THE DISTRICT CLASSIFICATION FROM SINGLE FAMILY RESIDENTIAL (RS-10) TO GENERAL INDUSTRIAL (MG-10) AT OOKALA, NORTH HILO, HAWAII.

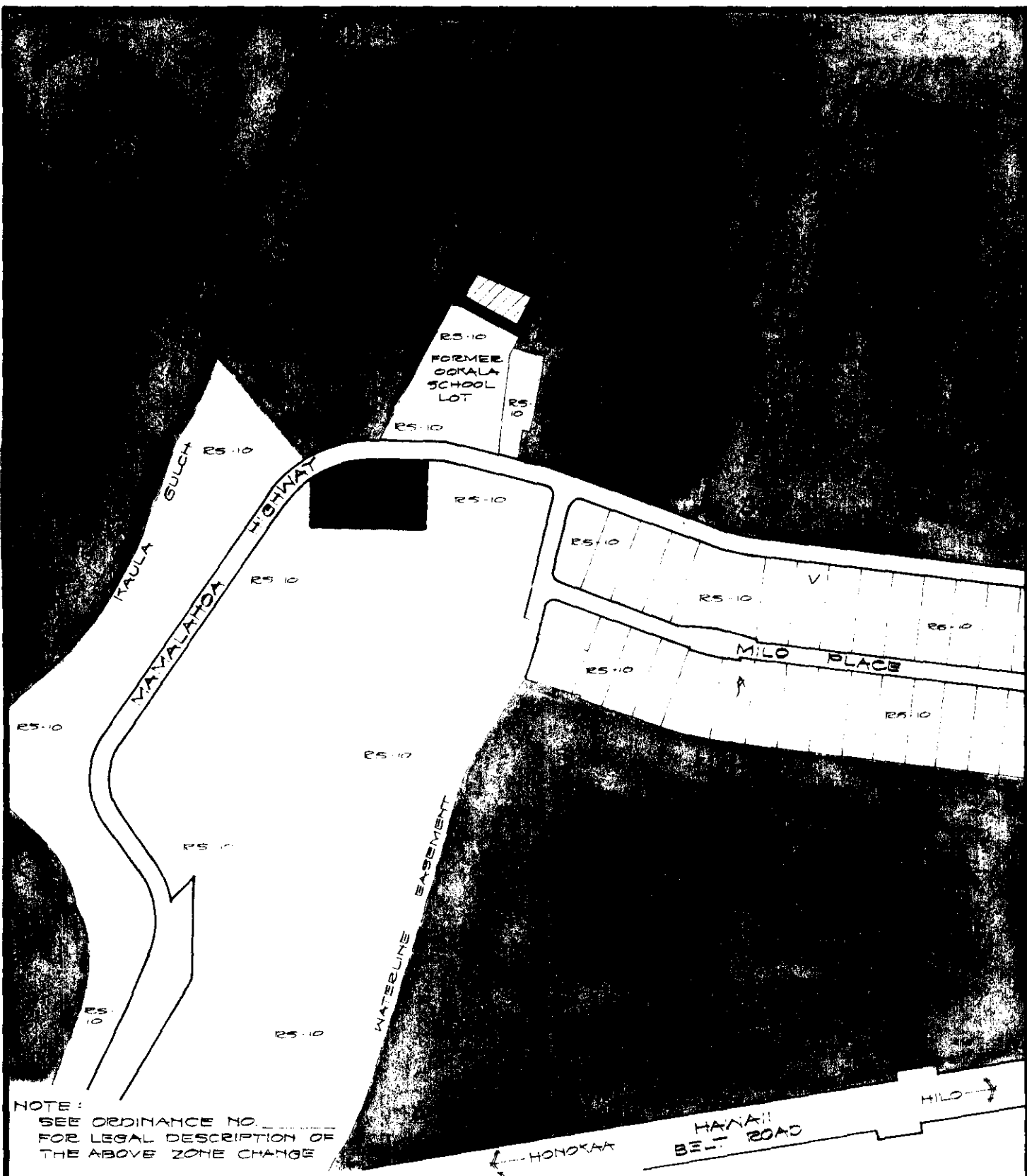
DATE OF PUBLIC HEARING: JULY 13, 1972
 DATE OF APPROVAL:
 ORDINANCE NO.
 PREPARED BY: PLANNING DEPARTMENT
 COUNTY OF HAWAII



AMENDMENT TO THE COUNTY ZONING ORDINANCE

AMENDMENT NO. 1 OF SECTION 7.16, THE OOKALA ZONE MAP, PORTION OF ORDINANCE NUMBER 110, CHANGING THE DISTRICT CLASSIFICATION FROM SINGLE FAMILY RESIDENTIAL (RS-10) TO GENERAL INDUSTRIAL (MG-10) AT OOKALA, NORTH HILO, HAWAII.

DATE OF PUBLIC HEARING : JULY 13, 1972
 DATE OF APPROVAL :
 ORDINANCE NO.
 PREPARED BY : PLANNING DEPARTMENT
 COUNTY OF HAWAII



NOTE:
 SEE ORDINANCE NO. _____
 FOR LEGAL DESCRIPTION OF
 THE ABOVE ZONE CHANGE

AMENDMENT TO THE COUNTY ZONING ORDINANCE

AMENDMENT NO. 1 OF SECTION 7.16, THE OOKALA ZONE MAP, PORTION OF ORDINANCE NUMBER 110, CHANGING THE DISTRICT CLASSIFICATION FROM SINGLE FAMILY RESIDENTIAL (RS-10) TO GENERAL INDUSTRIAL (MG-10) AT OOKALA, NORTH HILO, HAWAII.

DATE OF PUBLIC HEARING: JULY 13, 1972
 DATE OF APPROVAL:
 ORDINANCE NO.
 PREPARED BY: PLANNING DEPARTMENT
 COUNTY OF HAWAII

Hilo, Hawaii

Date: October 25, 1972

FIRST READING			
	AYES	NOES	A/E
Carpenter	X		
De Luz	X		
Edwards	X		
Greenwell	X		
Hisaoka	X		
Souza	X		
Yadao	X		
Yamada	X		
Chr Matayoshi	X		
	9	0	0

Hilo, Hawa.

Date: November 9, 1972

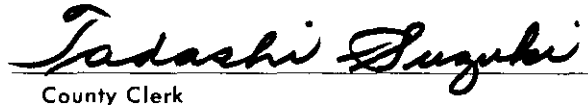
SECOND & FINAL READING			
	AYES	NOES	A/E
Carpenter	X		
De Luz	X		
Edwards	X		
Greenwell	X		
Hisaoka	X		
Souza	X		
Yadao	X		
Yamada	X		
Chr Matayoshi	X		
	9	0	0

Publication Date: October 30, 1972


Publication Date: November 20, 1972

We do hereby certify that the foregoing BILL was adopted by the County Council and published as indicated above.


 Council Chairman


 County Clerk

Approved/Disapproved this 14th day of
November, 1972


 Mayor, County of Hawaii

Bill No. 936
 Reference: C-2150/PEDLC-89
 M.B. No. 2014 538 2043
 ORD. No. 538

Bill No. 936 - 1972

AN ORDINANCE AMENDING SECTION 7.16, THE OOKALA ZONE MAP, ORDINANCE NO. 63 (ZONING ORDINANCE), REVISED ORDINANCES OF THE COUNTY OF HAWAII 1967, AS AMENDED, BY CHANGING THE DISTRICT CLASSIFICATION FROM SINGLE FAMILY RESIDENTIAL (RS-10) TO GENERAL INDUSTRIAL (MG-1a) AT OOKALA, NORTH HILO, HAWAII, COVERED BY TAX MAP KEY 3-9-01: PORTION OF 6.

This Bill proposes to amend the Ookala Zone Map by changing the district classification of land from a single family residential (RS-10) to a general industrial (MG-1a) zoned district at Ookala, North Hilo, Hawaii.

Date Introduced: October 25, 1972

Copies of the foregoing Bill, in full, are on file in the Office of the County Clerk for use and examination by the public.

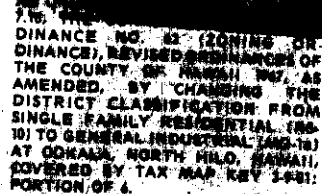
I hereby certify that the foregoing Bill passed first reading at the meeting of the County Council on October 25, 1972, by the following aye and no vote:

AYES: Councilmen Carpenter, De Luz, Edwards, Greenwell, Hisaoka, Souza, Yadao, Yamada and Chairman Matayoshi - 9.

NOES: None.



COUNTY CLERK
COUNTY OF HAWAII



7.16. THE OOKALA ZONE MAP, ORDINANCE NO. 63 (ZONING ORDINANCE), REVISED ORDINANCES OF THE COUNTY OF HAWAII 1967, AS AMENDED, BY CHANGING THE DISTRICT CLASSIFICATION FROM SINGLE FAMILY RESIDENTIAL (RS-10) TO GENERAL INDUSTRIAL (MG-1a) AT OOKALA, NORTH HILO, HAWAII, COVERED BY TAX MAP KEY 3-9-01: PORTION OF 6.

This Bill proposes to amend the Ookala Zone Map by changing the district classification of land from a single family residential (RS-10) to a general industrial (MG-1a) zoned district at Ookala, North Hilo, Hawaii.

Date introduced: October 25, 1972

Copies of the foregoing Bill, in full, are on file in the Office of the County Clerk for use and examination by the public.

I hereby certify that the foregoing Bill passed first reading at the meeting of the County Council on October 25, 1972, by the following aye and no vote:

AYES: Councilmen Carpenter, De Luz, Edwards, Greenwell, Hisaoka, Souza, Yadao, Yamada and Chairman Matayoshi - 9.

NOES: None.

Tadashi Suzuki
COUNTY CLERK
COUNTY OF HAWAII

ORDINANCE NO. 538
(Bill No. 936-1972)

AN ORDINANCE AMENDING SECTION 7.16, THE OOKALA ZONE MAP, ORDINANCE NO. 63 (ZONING ORDINANCE), REVISED ORDINANCES OF THE COUNTY OF HAWAII 1967, AS AMENDED, BY CHANGING THE DISTRICT CLASSIFICATION FROM SINGLE FAMILY RESIDENTIAL (RS-10) TO GENERAL INDUSTRIAL (MG-1a) AT OOKALA, NORTH HILO, HAWAII, COVERED BY TAX MAP KEY 3-9-01:PORTION OF 6.


Date Approved: November 9, 1972
Date Effective: November 14, 1972

Copies of the foregoing Ordinance, in full, are on file in the Office of the County Clerk for use and examination by the public.

I hereby certify that the foregoing Ordinance passed second and final reading at the meeting of the County Council on November 9, 1972, by the following aye and no vote:

AYES: Councilmen Carpenter, De Luz, Edwards, Greenwell, Hisaoka, Souza, Yadao, Yamada and Chairman Matayoshi - 9.

NOES: None.


DEPUTY COUNTY CLERK
COUNTY OF HAWAII

AN ORDINANCE AMENDING SECTION 7.16, THE OOKALA ZONE MAP, ORDINANCE NO. 63 (ZONING ORDINANCE), REVISED ORDINANCES OF THE COUNTY OF HAWAII 1967, AS AMENDED, BY CHANGING THE DISTRICT CLASSIFICATION FROM SINGLE FAMILY RESIDENTIAL (RS-10) TO GENERAL INDUSTRIAL (MG-1a) AT OOKALA, NORTH HILO, HAWAII, COVERED BY TAX MAP KEY 3-9-01:PORTION OF 6.

Date Approved: November 9, 1972
Date Effective: November 14, 1972

Copies of the foregoing Ordinance, in full, are on file in the Office of the County Clerk for use and examination by the public.

I hereby certify that the foregoing Ordinance passed second and final reading at the meeting of the County Council on November 9, 1972, by the following aye and no vote:

AYES: Councilmen Carpenter, De Luz, Edwards, Greenwell, Hisaoka, Souza, Yadao, Yamada and Chairman Matayoshi - 9.

NOES: None.

R. S. SRIDJI
DEPUTY COUNTY CLERK
COUNTY OF HAWAII

Tadashi Suzuki
COUNTY CLERK



Robert Shioji
DEPUTY COUNTY CLERK

OFFICE OF THE COUNTY CLERK
COUNTY OF HAWAII
HILO, HAWAII 96720

Mayor Shunichi Kimura
County of Hawaii
Hilo, Hawaii

I hereby transmit Ordinance Bill No. 936 passed by
the County Council on second and final reading.

A handwritten signature in cursive script that reads "Tadashi Suzuki".

COUNTY CLERK

Encl.

Dated: November 10, 1972