

COUNTY OF HAWAII - STATE OF HAWAII

558

ORDINANCE NO. _____

AN ORDINANCE AMENDING SECTION 7.02 (aa), RELATIVE TO THE NORTH KONA ZONE MAP OF ORDINANCE NO. 63 (ZONING ORDINANCE), REVISED ORDINANCES OF THE COUNTY OF HAWAII 1967, AS AMENDED, BY CHANGING THE DISTRICT CLASSIFICATION FROM UNPLANNED (U) TO AGRICULTURAL (A-1a) AT OOMA 1ST, NORTH KONA, HAWAII, COVERED BY TAX MAP KEY 7-3-10:1.

BE IT ORDAINED BY THE COUNCIL OF THE COUNTY OF HAWAII:

SECTION 1. Section 7.02 (aa) of Ordinance No. 63 (Zoning Ordinance), Revised Ordinances of the County of Hawaii 1967, as amended, is hereby amended to read as follows:

"7.02 (aa). The district classification of the following area situated at Ooma 1st, North Kona, Hawaii, shall be Agricultural (A-1a):

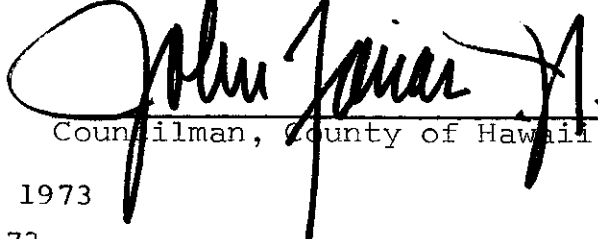
Beginning at the northwest corner of this parcel of land and the northeast corner of the Homestead Road, the coordinates of said point of beginning referred to Government Survey Triangulation Station "MOANUIAHEA," being 8,166.22 feet South and 16,390.43 feet West, thence running by azimuths measured clockwise from true South:

1. 276° 23' 21" 3212.18 feet along stone wall, along Grant 2972 to Kaakau and Kama;
2. 358° 16' 07" 1431.07 feet along stone wall, along Akahipuu Homesteads;
3. 76° 55' 00" 804.76 feet along stone wall, along Lot 56;
4. 79° 14' 50" 1862.15 feet along stone wall, along Lot 58;
5. 164° 58' 22" 2399.52 feet along stone wall, along Homestead Road to the point of beginning and containing an area of 126.233 acres.

"All as outlined in red on the map attached hereto, marked Exhibit "A" and by reference made a part hereof."

SECTION 2. This ordinance shall take effect upon its approval.

INTRODUCED BY:

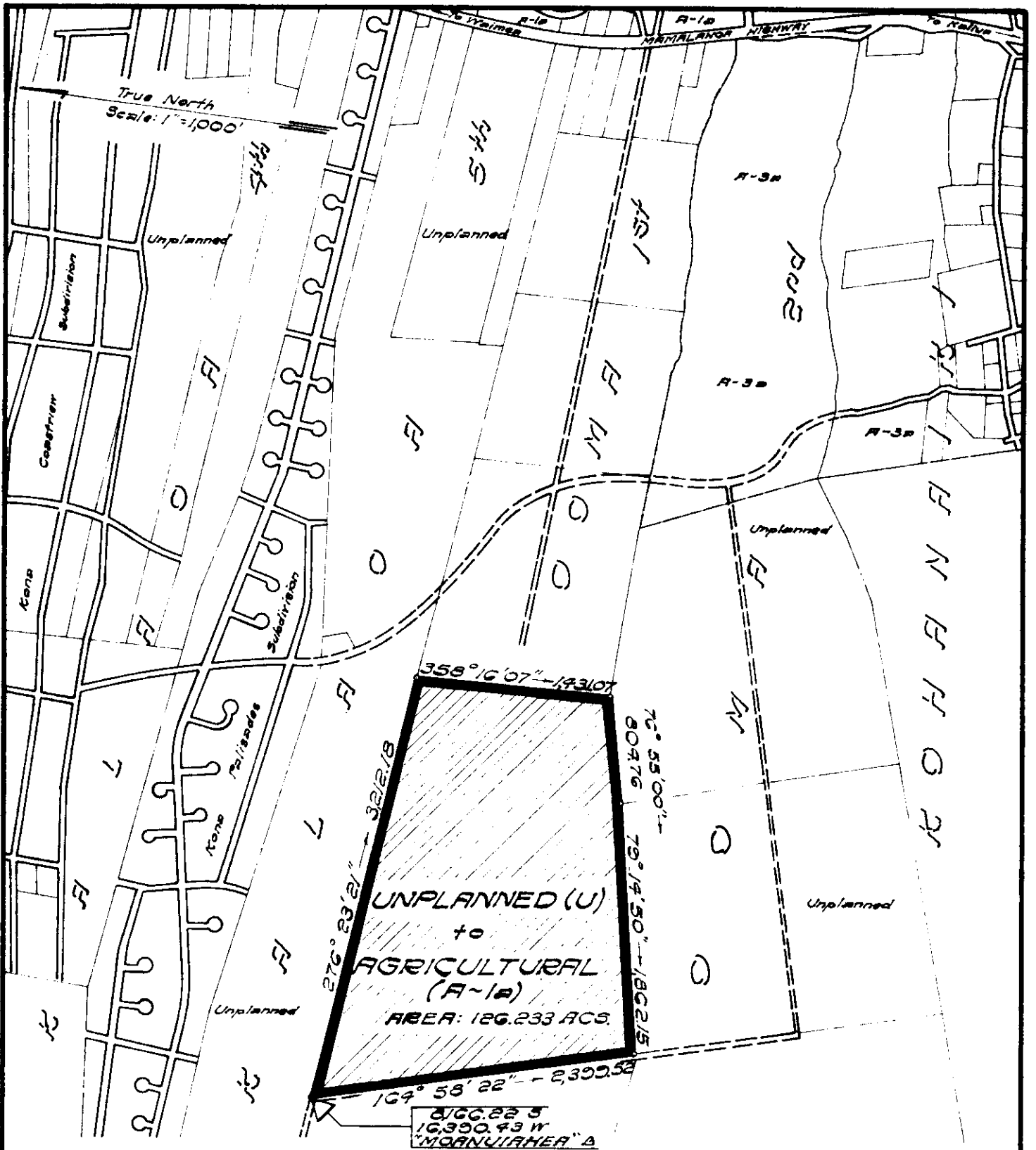


 Councilman, County of Hawaii

Hilo, Hawaii

Date of Introduction: February 7, 1973

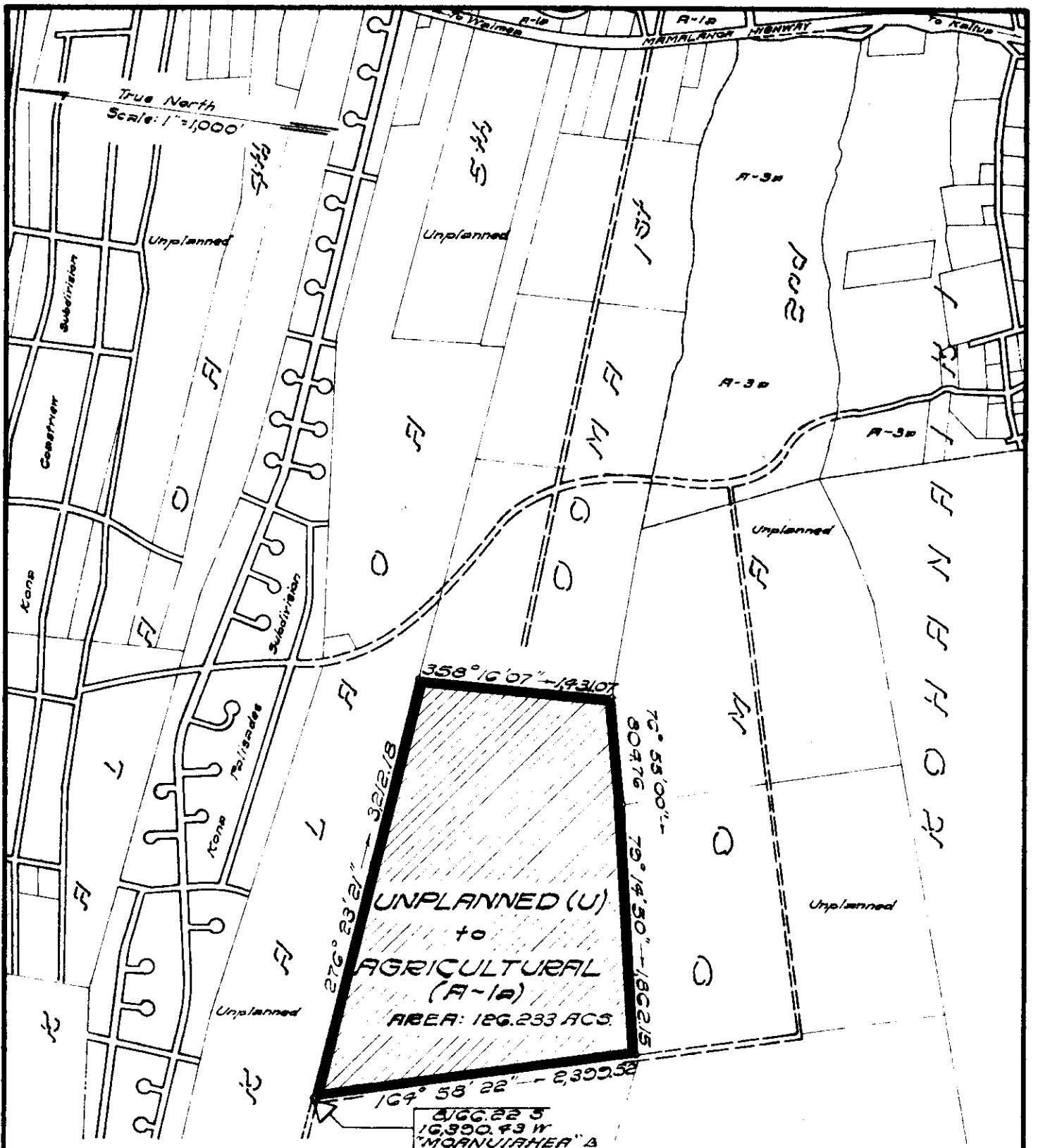
Date of Adoption: February 21, 1973



AMENDMENT TO THE COUNTY ZONING ORDINANCE

AMENDMENT NO. 27 OF SECTION 702, THE NORTH KONA ZONE MAP, PORTION OF ORDINANCE NO. 74, CHANGING THE DISTRICT CLASSIFICATION FROM UNPLANNED (U) TO AGRICULTURAL (A-1a) IN OOMA 1st, NORTH KONA, HAWAII.

DATE OF PUBLIC HEARING: MAY 25, 1972
 DATE OF APPROVAL: AUG. 28, 1972
 ORDINANCE NO. 514
 PREPARED BY: PLANNING DEPARTMENT
 COUNTY OF HAWAII



AMENDMENT TO THE COUNTY ZONING ORDINANCE

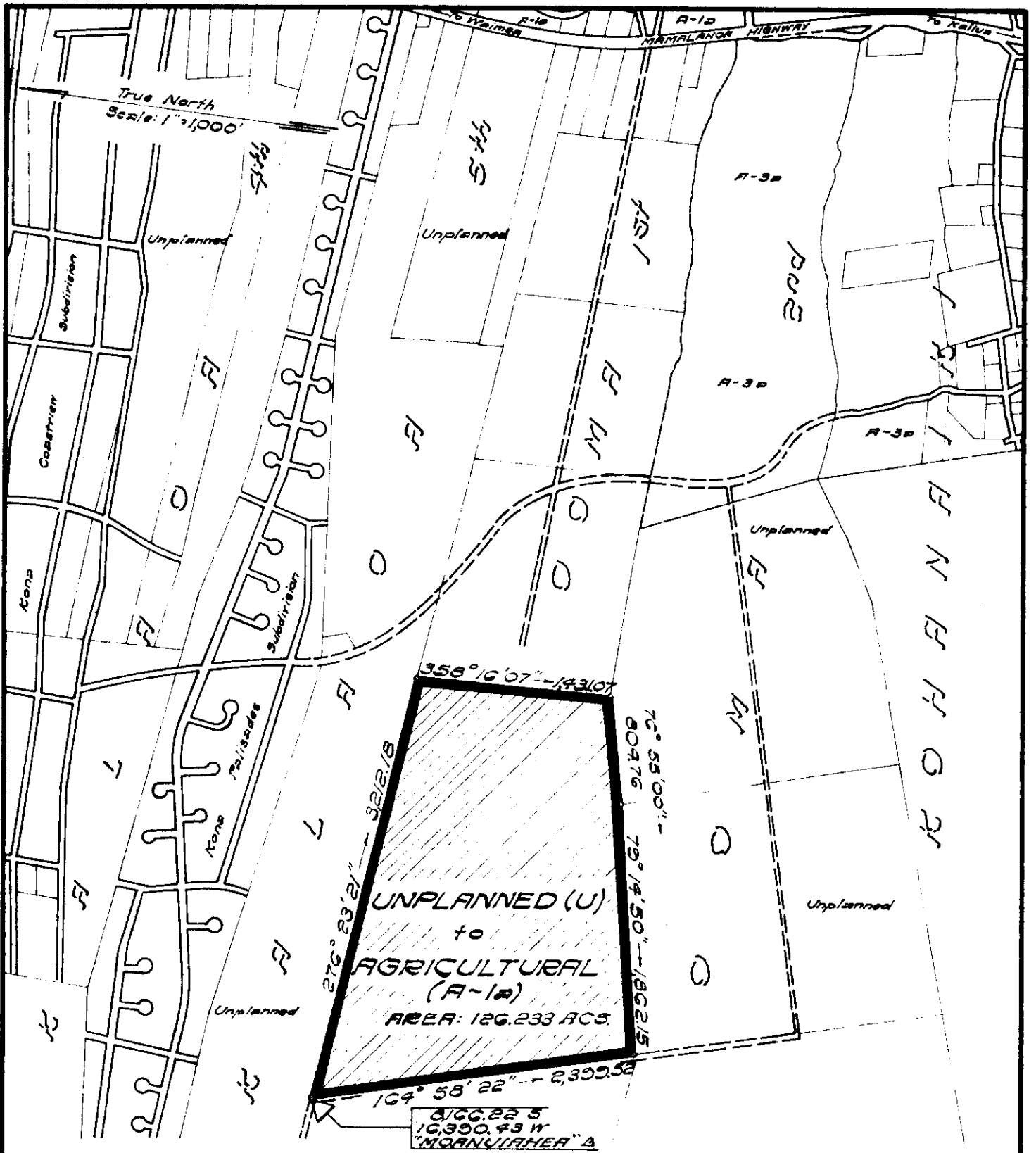
AMENDMENT NO. 27 OF SECTION 702, THE NORTH KONA ZONE MAP, PORTION OF ORDINANCE NO. 74, CHANGING THE DISTRICT CLASSIFICATION FROM UNPLANNED (U) TO AGRICULTURAL (A-1a) IN OOMA 1st, NORTH KONA, HAWAII.

DATE OF PUBLIC HEARING: MAY 25, 1972

DATE OF APPROVAL: AUG. 28, 1972

ORDINANCE NO. 514

PREPARED BY: PLANNING DEPARTMENT
COUNTY OF HAWAII



AMENDMENT TO THE COUNTY ZONING ORDINANCE

AMENDMENT NO. 27 OF SECTION 702, THE NORTH KONA ZONE MAP, PORTION OF ORDINANCE NO. 74, CHANGING THE DISTRICT CLASSIFICATION FROM UNPLANNED (U) TO AGRICULTURAL (A-1a) IN OOMA 1st, NORTH KONA, HAWAII.

DATE OF PUBLIC HEARING: MAY 25, 1972

DATE OF APPROVAL: AUG. 28, 1972

ORDINANCE NO. 514

PREPARED BY: PLANNING DEPARTMENT
COUNTY OF HAWAII

Hilo, Hawaii
 Date: February 7, 1973

FIRST READING			
	AYES	NOES	A/E
Carpenter	X		
De Luz	X		
Farias	X		
Fujii	X		
Hisaoka	X		
Kawahara		X	
Matayoshi	X		
Yadao	X		
Chr. Yamada	X		
	8	1	0

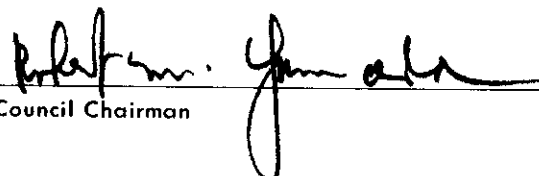
Publication Date: February 13, 1973

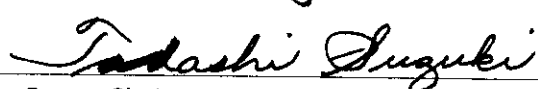
Hilo, Hawaii
 Date: February 21, 1973

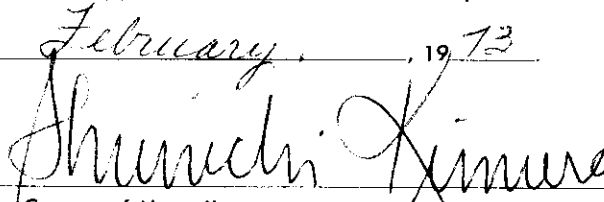
SECOND & FINAL READING			
	AYES	NOES	A/E
Carpenter	X		
De Luz	X		
Farias	X		
Fujii	X		
Hisaoka	X		
Kawahara	X		
Matayoshi	X		
Yadao	X		
Chr. Yamada	X		
	9	0	0

Publication Date: March 13, 1973

We do hereby certify that the foregoing BILL was adopted by the County Council and published as indicated above.


 Council Chairman


 County Clerk

Approved/Disapproved this 27th day of
February, 1973

 Mayor, County of Hawaii

Bill No. 961
 Reference: C-97/PRDC-3
 M.B. No. 76-107
 Ord. No. 558

Bill No. 961 - 1973

AN ORDINANCE AMENDING SECTION 7.02 (aa), RELATIVE TO THE NORTH KONA ZONE MAP OF ORDINANCE NO. 63 (ZONING ORDINANCE), REVISED ORDINANCES OF THE COUNTY OF HAWAII 1967, AS AMENDED, BY CHANGING THE DISTRICT CLASSIFICATION FROM UNPLANNED (U) TO AGRICULTURAL (A-1a) AT OOMA 1ST, NORTH KONA, HAWAII, COVERED BY TAX MAP KEY 7-3-10:1.

This Bill revises the metes and bounds description of Ordinance No. 514 which amends the North Kona Zone Map of Ordinance No. 63, as amended, by changing the district classification of land from unplanned (U) to agricultural (A-1a) at Ooma 1st, North Kona, Hawaii.

Date Introduced: February 7, 1973

Copies of the foregoing Bill, in full, are on file in the Office of the County Clerk for use and examination by the public.

I hereby certify that the foregoing Bill passed first reading at the meeting of the County Council on February 7, 1973, by the following aye and no vote:

AYES: Councilmen Carpenter, De Luz, Farias, Fujii, Hisaoka, Matayoshi, Yadao, and Chairman Yamada - 8.

NOES: Councilmen Kawahara - 1.



COUNTY CLERK
COUNTY OF HAWAII

Bill No. 961 - 1973
AN ORDINANCE AMENDING SECTION 7.02 (aa), RELATIVE TO THE NORTH KONA ZONE MAP OF ORDINANCE NO. 63 (ZONING ORDINANCE), REVISED ORDINANCES OF THE COUNTY OF HAWAII 1967, AS AMENDED, BY CHANGING THE DISTRICT CLASSIFICATION FROM UNPLANNED (U) TO AGRICULTURAL (A-1a) AT OOMA 1ST, NORTH KONA, HAWAII, COVERED BY TAX MAP KEY 7-3-10:1.

This Bill revises the metes and bounds description of Ordinance No. 514 which amends the North Kona Zone Map of Ordinance No. 63, as amended, by changing the district classification of land from unplanned (U) to agricultural (A-1a) at Ooma 1st, North Kona, Hawaii.

Date Introduced: February 7, 1973.
Copies of the foregoing Bill, in full, are on file in the Office of the County Clerk for use and examination by the public.

I hereby certify that the foregoing Bill passed first reading at the meeting of the County Council on February 7, 1973, by the following aye and no vote:

AYES: Councilmen Carpenter, De Luz, Farias, Fujii, Hisaoka, Matayoshi, Yadao, and Chairman Yamada - 8.
NOES: Councilmen Kawahara - 1.

TADASHI SUZUKI,
COUNTY CLERK
COUNTY OF HAWAII

(103-Hawaii Tribune-Herald: Feb. 13, 1973)

ORDINANCE NO. 558
(Bill No. 961-1973)

AN ORDINANCE AMENDING SECTION 7.02(aa), RELATIVE TO THE NORTH KONA ZONE MAP OF ORDINANCE NO. 63 (ZONING ORDINANCE), REVISED ORDINANCES OF THE COUNTY OF HAWAII 1967, AS AMENDED, BY CHANGING THE DISTRICT CLASSIFICATION FROM UNPLANNED (U) TO AGRICULTURAL (A-1a) AT OOMA 1ST, NORTH KONA, HAWAII, COVERED BY TAX MAP KEY 7-3-10:1.

Date Approved: February 21, 1973
Date Effective: February 27, 1973

Copies of the foregoing Ordinance, in full, are on file in the Office of the County Clerk for use and examination by the public.

I hereby certify that the foregoing Ordinance passed second and final reading at the meeting of the County Council on February 21, 1973, by the following aye and no vote:

AYES: Councilmen Carpenter, De Luz, Farias, Fujii, Hisaoka, Kawahara, Matayoshi, Yadao and Chairman Yamada - 9.

NOES: None.

Tadashi Suzuki

COUNTY CLERK
COUNTY OF HAWAII

AN ORDINANCE AMENDING SECTION 7.02 (aa), RELATIVE TO THE NORTH KONA ZONE MAP OF ORDINANCE NO. 63 (ZONING ORDINANCE), REVISED ORDINANCES OF THE COUNTY OF HAWAII 1967, AS AMENDED, BY CHANGING THE DISTRICT CLASSIFICATION FROM UNPLANNED (U) TO AGRICULTURAL (A-1a) AT OOMA 1ST, NORTH KONA, HAWAII, COVERED BY TAX MAP KEY 7-3-10:1.

Date Approved: February 21, 1973
Date Effective: February 27, 1973

Copies of the foregoing Ordinance, in full, are on file in the Office of the County Clerk for use and examination by the public.

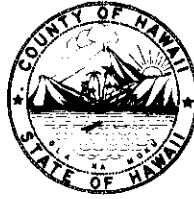
I hereby certify that the foregoing Ordinance passed second and final reading at the meeting of the County Council on February 21, 1973, by the following aye and no vote:

AYES: Councilmen Carpenter, De Luz, Farias, Fujii, Hisaoka, Kawahara, Matayoshi, Yadao and Chairman Yamada - 9.

NOES: None.

TADASHI SUZUKI
COUNTY CLERK
COUNTY OF HAWAII

Tadashi Suzuki
COUNTY CLERK



Robert Shioji
DEPUTY COUNTY CLERK

OFFICE OF THE COUNTY CLERK

COUNTY OF HAWAII
HILO, HAWAII 96720

Mayor Shunichi Kimura
County of Hawaii
Hilo, Hawaii

I hereby transmit Ordinance Bill No. 961 passed by
the County Council on second and final reading.

Tadashi Suzuki
COUNTY CLERK

Encl.

Dated: February 21, 1973