

COUNTY OF HAWAII - STATE OF HAWAII

ORDINANCE NO. 615

AN ORDINANCE AMENDING SECTION 7.02, THE NORTH KONA ZONE MAP, ORDINANCE NO. 63 (ZONING ORDINANCE), REVISED ORDINANCES OF THE COUNTY OF HAWAII 1967, AS AMENDED, BY CHANGING THE DISTRICT CLASSIFICATION FROM AGRICULTURAL (A-5a) TO AGRICULTURAL (A-3a) AND FROM UNPLANNED (U) TO AGRICULTURAL (A-1a) IN KEOPU 3RD, NORTH KONA, HAWAII, COVERED BY TAX MAP KEY 7-5-24:10-21 and 28-42.

BE IT ORDAINED BY THE COUNCIL OF THE COUNTY OF HAWAII:

SECTION 1. Section 7.02 of Ordinance No. 63 (Zoning Ordinance), Revised Ordinances of the County of Hawaii 1967, as amended, is hereby further amended by adding thereto the following subsections:

"7.02 (r-1). The district classification of the following area situated at Keopu 3rd, North Kona, Hawaii, shall be Agricultural (A-3a):

Beginning at a "+" on rock at the northeast corner of this parcel of land, and on the westerly side of Mamalahoa Highway, the coordinates of which referred to Government Survey Triangulation Station "KAHELO" being 13,058.35 feet North and 9,837.01 feet East, and thence running by azimuths measured clockwise from True South:

Along the westerly side of Mamalahoa Highway for the following eight (8) courses:

1. 334° 31' 155.93 feet;
2. 340° 38' 30" 209.61 feet to a pipe in concrete;
3. 338° 18' 30" 98.23 feet to a pipe in concrete;
4. 357° 20' 30" 84.58 feet to a pipe in concrete;
5. 9° 12' 30" 41.75 feet to a pipe in concrete;
6. 4° 07' 30" 170.23 feet to a pipe in concrete;
7. 358° 57' 31.51 feet to a pipe in concrete;
8. 353° 06' 30" 101.71 feet to a pipe in concrete; thence
9. 61° 34' 90.03 feet along stonewall along L. C. Aw. 7346 to Kaina, to a pipe in concrete;
10. 77° 48' 189.50 feet along stonewall to a pipe in concrete;
11. 167° 32' 139.66 feet along stonewall to a pipe in concrete;
12. 76° 38' 48.31 feet along stonewall to a pipe in concrete;
13. 66° 08' 30" 35.45 feet along stonewall to a pipe in concrete;
14. 58° 56' 30" 117.80 feet along stonewall to a pipe in concrete;

- |     |      |         |  |
|-----|------|---------|--|
| 15. | 70°  | 33' 30" | 113.49 feet along stonewall to a pipe in concrete; |
| 16. | 61°  | 43' 30" | 55.88 feet along stonewall to a pipe in concrete;  |
| 17. | 64°  | 17'     | 459.35 feet along stonewall to a pipe in concrete; |
| 18. | 72°  | 29'     | 471.75 feet along stonewall to a pipe in concrete; |
| 19. | 340° | 56'     | 57.45 feet along stonewall to a pipe in concrete;  |
| 20. | 349° | 16'     | 79.90 feet along stonewall to a pipe in concrete;  |
| 21. | 342° | 38'     | 80.45 feet along stonewall to a pipe in concrete;  |

Thence along stonewall along Grant 3100 to J. W. Kuakamaunu for the following eighteen (18) courses:

- |     |      |         |  |
|-----|------|---------|--|
| 22. | 68°  | 28'     | 108.51 feet to a pipe in concrete;   |
| 23. | 63°  | 32' 30" | 26.71 feet to a pipe in concrete;  |
| 24. | 71°  | 54'     | 52.57 feet to a pipe in concrete;  |
| 25. | 65°  | 42'     | 32.85 feet to a pipe in concrete;  |
| 26. | 67°  | 49' 30" | 111.65 feet to a pipe in concrete;   |
| 27. | 78°  | 57'     | 57.68 feet to a pipe in concrete;  |
| 28. | 72°  | 21' 30" | 111.25 feet to a pipe in concrete;   |
| 29. | 75°  | 10' 30" | 60.38 feet to a pipe in concrete;  |
| 30. | 69°  | 41'     | 94.29 feet to a pipe in concrete;  |
| 31. | 75°  | 16'     | 77.53 feet to a pipe in concrete;  |
| 32. | 70°  | 24'     | 64.84 feet to a pipe in concrete;  |
| 33. | 56°  | 36'     | 91.19 feet to a pipe in concrete;  |
| 34. | 59°  | 18'     | 52.71 feet to a pipe in concrete;  |
| 35. | 60°  | 46'     | 62.04 feet to a pipe in concrete;  |
| 36. | 62°  | 59' 30" | 63.19 feet to a pipe in concrete;  |
| 37. | 60°  | 57' 30" | 73.60 feet to a pipe in concrete;  |
| 38. | 54°  | 26'     | 199.11 feet to a pipe in concrete;   |
| 39. | 54°  | 41'     | 119.85 feet to a pipe in concrete; thence  |
| 40. | 153° | 03'     | 864.83 feet along the remainder of R. P. 4475, L. C. Aw. 7713:5 to V. Kamamalu to a point; |

Thence, along stonewall, along Grant 978 to Kialoa for the following thirty-eight (38) courses:

41.	246°	46' 30"	104.43 feet to a pipe in concrete;
42.	245°	42'	57.99 feet to a pipe in concrete;
43.	245°	04' 30"	44.92 feet to a pipe in concrete;
44.	242°	19'	88.74 feet to a pipe in concrete;
45.	246°	05' 30"	74.66 feet to a pipe in concrete;
46.	233°	59'	234.49 feet to a pipe in concrete;
47.	237°	45'	35.51 feet to a pipe in concrete;
48.	238°	09'	85.27 feet to a pipe in concrete;
49.	245°	04'	166.59 feet to a pipe in concrete;
50.	252°	43' 30"	91.28 feet to a pipe in concrete;
51.	252°	54'	138.25 feet to a pipe in concrete;
52.	248°	46'	82.19 feet to a pipe in concrete;
53.	248°	12' 30"	153.01 feet to a pipe in concrete;
54.	251°	51'	99.62 feet to a pipe in concrete;
55.	257°	05'	47.72 feet to a pipe in concrete;
56.	254°	03' 30"	37.79 feet to a pipe in concrete;
57.	249°	59'	97.82 feet to a pipe in concrete;
58.	252°	00'	56.73 feet to a pipe in concrete;
59.	251°	41'	74.19 feet to a pipe in concrete;
60.	248°	13'	164.58 feet to a pipe in concrete;
61.	242°	09'	120.54 feet to a pipe in concrete;
62.	239°	18'	76.14 feet to a pipe in concrete;
63.	233°	32'	70.17 feet to a pipe in concrete;
64.	249°	47' 30"	157.47 feet to a pipe in concrete;
65.	251°	49' 30"	93.83 feet to a pipe in concrete;
66.	235°	51'	53.11 feet to a pipe in concrete;
67.	254°	36'	67.20 feet to a pipe in concrete;
68.	240°	28' 30"	93.79 feet to a pipe in concrete;
69.	242°	39'	89.88 feet to a pipe in concrete;

70.	250°	44'	28.82 feet to a pipe in concrete;
71.	243°	18'	86.59 feet to a pipe in concrete;
72.	247°	11'	33.75 feet to a pipe in concrete;
73.	244°	50'	82.56 feet to a pipe in concrete;
74.	243°	21' 30"	113.77 feet to a pipe in concrete;
75.	236°	35'	29.54 feet to a pipe in concrete;
76.	245°	55' 30"	53.79 feet to a pipe in concrete;
77.	242°	24' 30"	31.18 feet to a pipe in concrete;
78.	245°	52'	60.05 feet to the point of beginning and containing an area of 56.121 Acres.

"7.02 (r-2). The district classification of the following area situated at Keopu 3rd, North Kona, Hawaii, shall be Agricultural (A-1a):

Beginning at a point at the southeast corner of this parcel of land, and on the northwest side of Grant 3100 to J. W. Kuakamaunu, the coordinates of which referred to Government Survey Triangulation Station "KAHELO" being 10,937.55 feet North and 7,260.87 feet East and thence running by azimuths measured clockwise from True South:

Along the stonewall, along Grant 3100 to J. W. Kuakamaunu for the following fourteen (14) courses:

1.	54°	41'	36.04 feet to a pipe in concrete;
2.	64°	10'	155.13 feet to a pipe in concrete;
3.	58°	15' 30"	99.84 feet to a pipe in concrete;
4.	53°	22'	21.78 feet to a pipe in concrete;
5.	51°	38'	33.48 feet to a pipe in concrete;
6.	46°	47'	31.78 feet to a pipe in concrete;
7.	56°	08' 30"	198.17 feet to a pipe in concrete;
8.	47°	59'	145.85 feet to a pipe in concrete;
9.	50°	51' 30"	73.18 feet to a pipe in concrete;
10.	44°	58' 30"	97.37 feet to a pipe in concrete;
11.	59°	23'	57.03 feet to a pipe in concrete;
12.	35°	28' 30"	60.22 feet to a pipe in concrete;
13.	50°	25'	135.33 feet to a pipe in concrete;
14.	52°	57'	51.77 feet to a "+" on rock; thence

15. 60° 28' 10" 16.35 feet across the existing roadway to a pipe in concrete; thence

Continuing along stonewall, along Grant 3100 to J. W. Kuakamaunu for the following six (6) courses:

16. 59° 25' 30" 25.44 feet to a pipe in concrete;  
17. 44° 46' 54.58 feet to a pipe in concrete;  
18. 56° 37' 203.25 feet to a pipe in concrete;  
19. 55° 35' 30" 77.97 feet to a pipe in concrete;  
20. 59° 13' 91.48 feet to a pipe in concrete;  
21. 67° 14' 30" 203.02 feet to a pipe in concrete; thence  
22. 159° 06' 221.33 feet along stonewall, along remainder of R. P. 4475, L. C. Aw. 7713, Apana 5 to V. Kamamalu, to a pipe in concrete;  
23. 163° 09' 30" 324.68 feet along remainder of R. P. 4475, L. C. Aw. 7713, Apana 5 to V. Kamamalu, to a pipe in concrete;  
24. 131° 57' 14.74 feet along remainder of R. P. 4475, L. C. Aw. 7713, Apana 5 to V. Kamamalu, to a pipe in concrete; thence

Along stonewall, along the remainder of R. P. 4475, L. C. Aw. 7713, Apana 5 to V. Kamamalu for the following six (6) courses:

25. 166° 40' 195.50 feet to a pipe in concrete;  
26. 162° 08' 95.96 feet to a pipe in concrete;  
27. 153° 04' 30" 59.56 feet to a pipe in concrete;  
28. 148° 33' 30" 60.33 feet to a pipe in concrete;  
29. 152° 13' 61.49 feet to a pipe in concrete;  
30. 156° 30' 119.02 feet to a pipe in concrete; thence

Along stonewall, along Grant 1589 to Iaenui for the following seven (7) courses:

31. 228° 33' 35.41 feet to a pipe in concrete;  
32. 238° 48' 15.56 feet to a pipe in concrete;  
33. 225° 42' 53.72 feet to a pipe in concrete;  
34. 232° 18' 30" 198.91 feet to a pipe in concrete;  
35. 236° 43' 64.98 feet to a pipe in concrete;  
36. 249° 38' 195.20 feet to a pipe in concrete;

- 37. 242° 33' 30" 61.27 feet to a pipe in concrete; thence
- 38. 239° 52' 50" 26.39 feet across the existing roadway to a pipe in concrete; thence

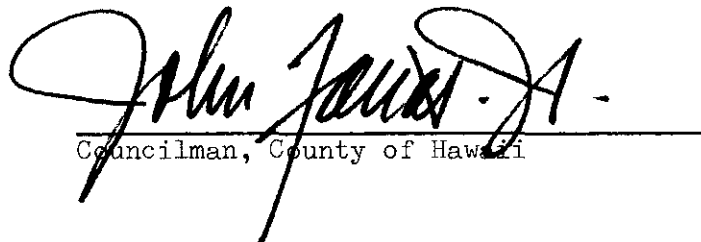
Continuing along stonewall, along Grant 1589 to Laenui for the following nine (9) courses:

- 39. 247° 09' 30" 120.16 feet to a pipe in concrete;
- 40. 250° 07' 98.53 feet to a pipe in concrete;
- 41. 255° 35' 129.53 feet to a pipe in concrete;
- 42. 244° 27' 30" 37.23 feet to a pipe in concrete;
- 43. 239° 40' 78.89 feet to a pipe in concrete;
- 44. 247° 13' 57.67 feet to a pipe in concrete;
- 45. 257° 05' 30" 132.93 feet to a pipe in concrete;
- 46. 248° 40' 43.95 feet to a pipe in concrete;
- 47. 244° 45' 92.44 feet to a pipe in concrete; thence
- 48. 239° 25' 30" 266.03 feet along Grant 978 to Kialoa to a pipe;
- 49. 246° 46' 30" 8.11 feet along Grant 978 to Kialoa to a point; thence
- 50. 333° 03' 864.83 feet along the remainder of R. P. 4475, L. C. Aw. 7713, Apana 5 to V. Kamamalu to the point of beginning and containing an area of 41.757 Acres.

"All as outlined in red on the map attached hereto, marked Exhibit "A" and by reference made a part hereof."

SECTION 2. This ordinance shall take effect upon its approval.

INTRODUCED BY:

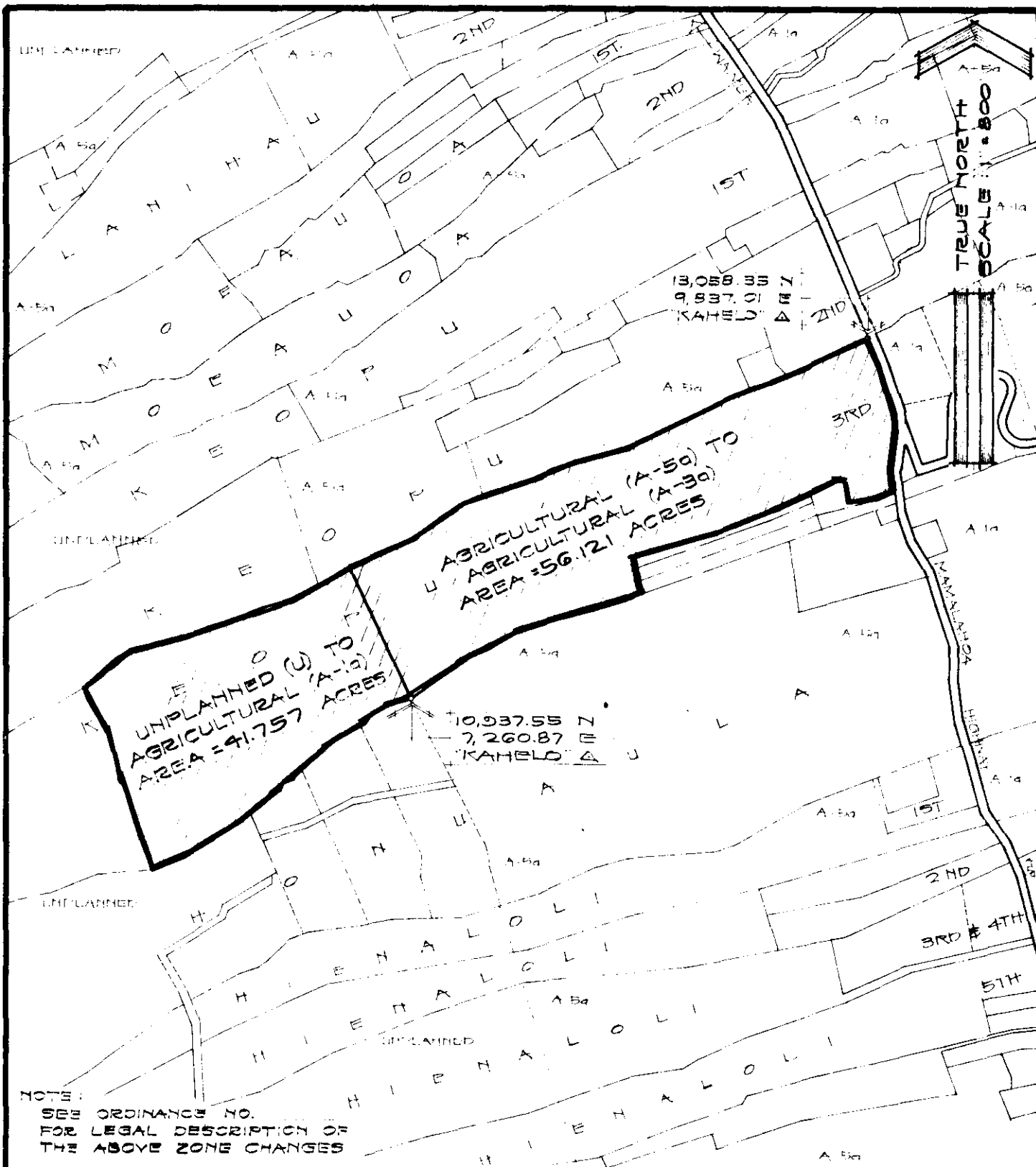
  
 Councilman, County of Hawaii

Hilo, Hawaii

Date of Introduction: November 7, 1973

Date of Adoption: November 20, 1973

Effective Date: November 28, 1973



## AMENDMENT TO THE COUNTY ZONING ORDINANCE

AMENDMENT NO. 18 OF SECTION 7.02, THE NORTH KONA ZONE MAP, PORTION OF ORDINANCE NO. 74, CHANGING THE DISTRICT CLASSIFICATION FROM AGRICULTURAL (A-5a) TO AGRICULTURAL (A-3a) AND FROM UNPLANNED (U) TO AGRICULTURAL (A-1a) IN KEOPU 3RD, NORTH KONA, HAWAII.

DATE OF PUBLIC HEARING : MARCH 24, 1972

DATE OF APPROVAL :

ORDINANCE NO.

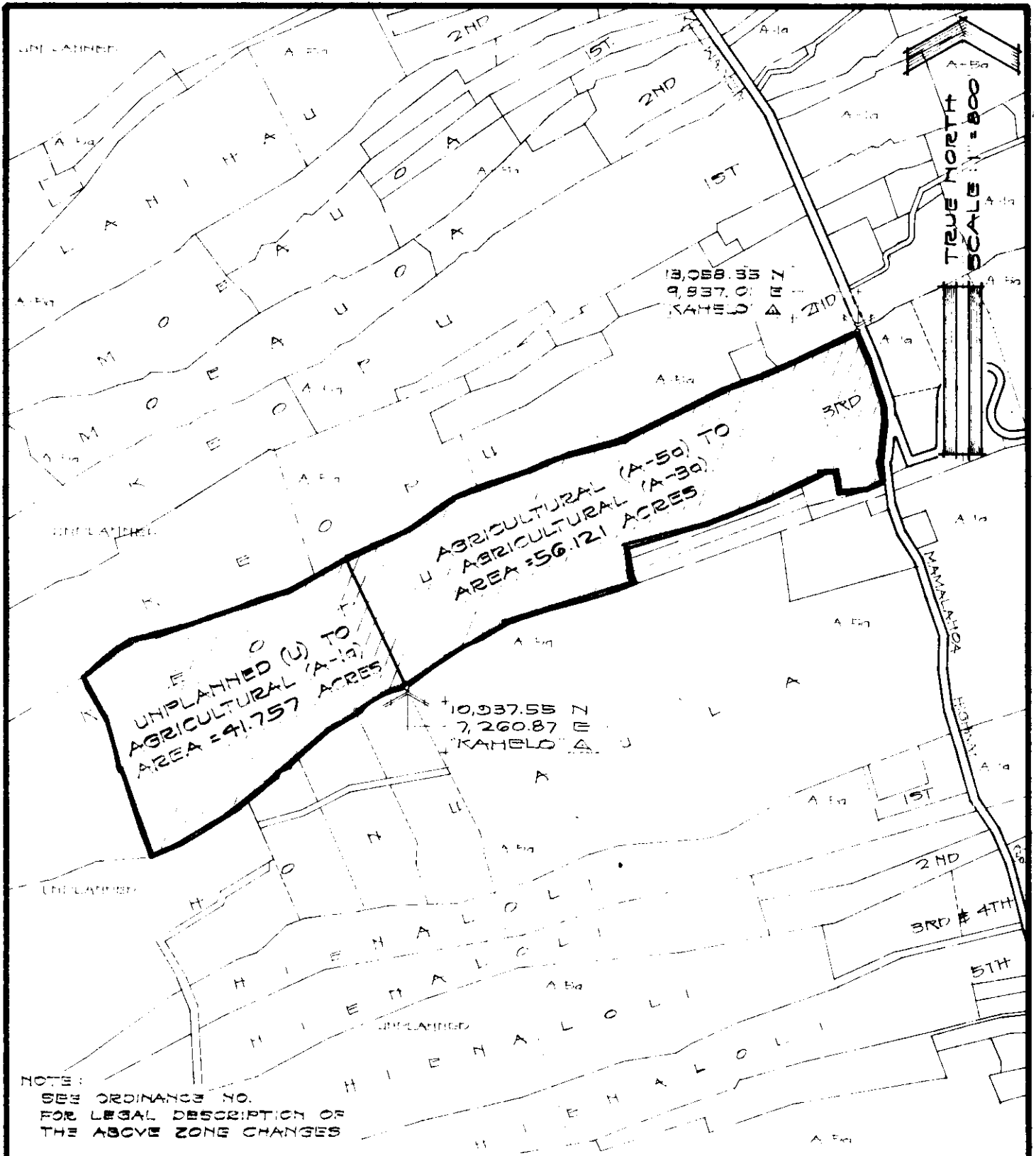
PREPARED BY : PLANNING DEPARTMENT

COUNTY OF HAWAII

TMK : 7-5-24

11 MAY 1972

EXHIBIT A



**AMENDMENT TO THE COUNTY ZONING ORDINANCE**

AMENDMENT NO. 18 OF SECTION 7.02, THE NORTH KONA ZONE MAP, PORTION OF ORDINANCE NO. 74, CHANGING THE DISTRICT CLASSIFICATION FROM AGRICULTURAL (A-5a) TO AGRICULTURAL (A-3a) AND FROM UNPLANNED (U) TO AGRICULTURAL (A-1a) IN KEOPU 3RD, NORTH KONA, HAWAII.

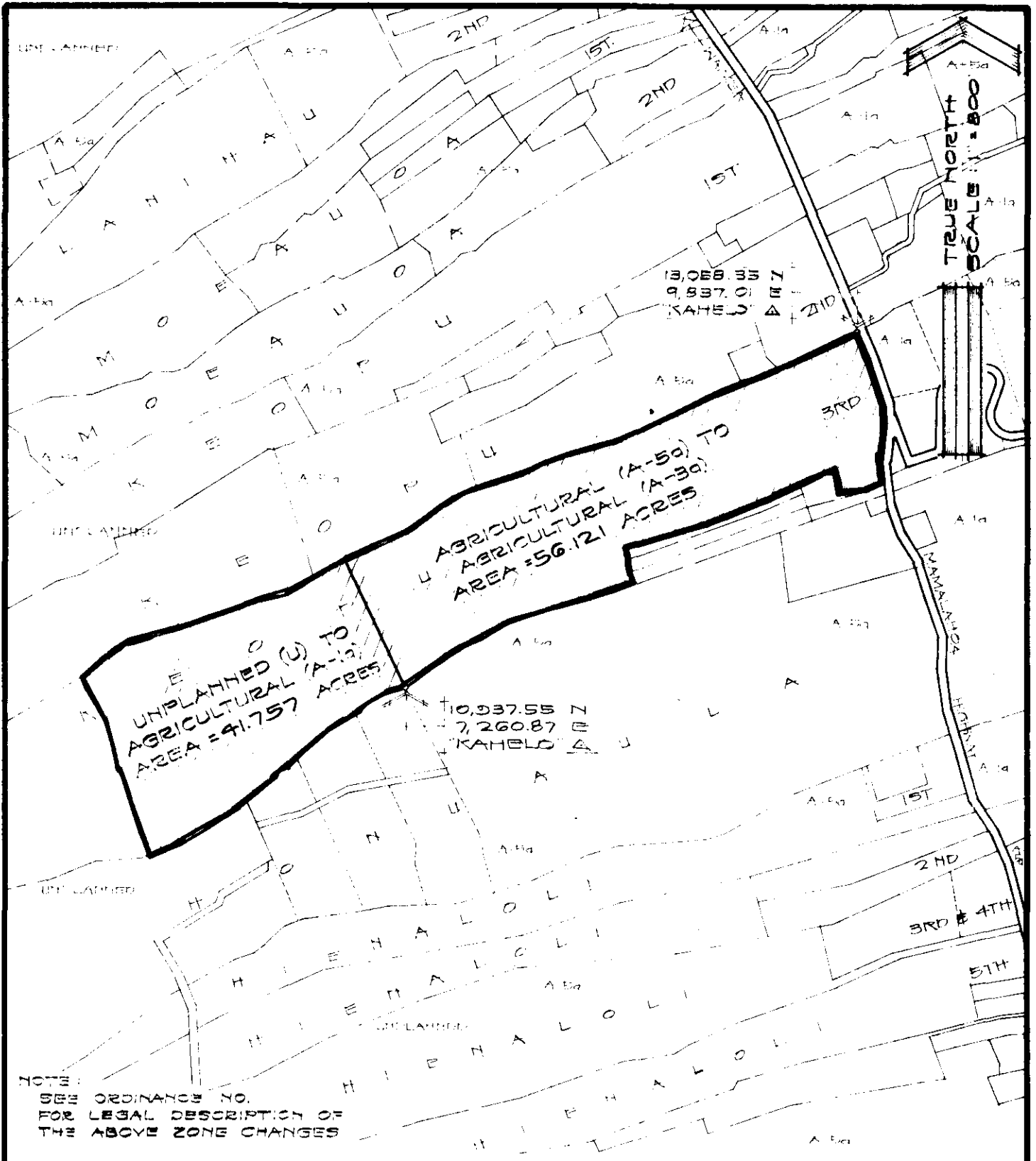
DATE OF PUBLIC HEARING : MARCH 24, 1972  
 DATE OF APPROVAL :  
 ORDINANCE NO.  
 PREPARED BY : PLANNING DEPARTMENT  
 COUNTY OF HAWAII

TMS : 7-5-24

11 MAY 1972

EXHIBIT A





**AMENDMENT TO THE COUNTY ZONING ORDINANCE**  
 AMENDMENT NO. 18 OF SECTION 7.02, THE NORTH KONA  
 ZONE MAP, PORTION OF ORDINANCE NO. 74, CHANGING  
 THE DISTRICT CLASSIFICATION FROM AGRICULTURAL (A-5a)  
 TO AGRICULTURAL (A-3a) AND FROM UNPLANNED (U) TO  
 AGRICULTURAL (A-1a) IN KEOPU 3RD, NORTH KONA, HAWAII.

DATE OF PUBLIC HEARING : MARCH 24, 1972  
 DATE OF APPROVAL :  
 ORDINANCE NO.  
 PREPARED BY : PLANNING DEPARTMENT  
 COUNTY OF HAWAII

TMK : 7-5-24

11 MAY 1972

EXHIBIT A

Hilo, Hawaii  
 Date: November 7, 1973

FIRST READING			
	AYES	NOES	A/E
Carpenter	X		
De Luz	X		
Farias	X		
Fujii	X		
Hisaoka	X		
Kawahara	X		
Matayoshi	X		
Yadao	X		
Chr. Yamada	X		
	9		

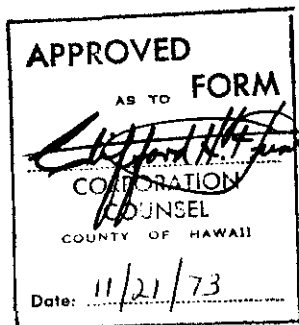
Hilo, Hawaii  
 Date: November 20, 1973

SECOND & FINAL READING			
	AYES	NOES	A/E
Carpenter	X		
De Luz	X		
Farias	X		
Fujii	X		
Hisaoka	X		
Kawahara	X		
Matayoshi	X		
Yadao	X		
Chr. Yamada	X		
	9		

Publication Date: NOV 15 1973

Publication Date: DEC 2 1973

We do hereby certify that the foregoing BILL was adopted by the County Council and published as indicated above.



Robert M. Yamada  
 Council Chairman

Robert Shigi  
 County Clerk

Approved/Disapproved this 28th day of  
November, 1973

Kunio Kaminaga  
 Mayor, County of Hawaii

Bill No. 1021  
 Reference: C-529/PRDC-19  
 M.B. No. \_\_\_\_\_  
 Ord. No. 615

Bill No. 1021 - 1973

AN ORDINANCE AMENDING SECTION 7.02, THE NORTH KONA ZONE MAP, ORDINANCE NO. 63 (ZONING ORDINANCE), REVISED ORDINANCES OF THE COUNTY OF HAWAII 1967, AS AMENDED, BY CHANGING THE DISTRICT CLASSIFICATION FROM AGRICULTURAL (A-5a) TO AGRICULTURAL (A-3a) AND FROM UNPLANNED (U) TO AGRICULTURAL (A-1a) IN KEOPU 3RD, NORTH KONA, HAWAII, COVERED BY TAX MAP KEY 7-5-24:10-21 and 28-42.

This Bill proposes to amend the North Kona Zone Map by changing the district classification from Agricultural (A-5a) to Agricultural (A-3a) and from Unplanned (U) to Agricultural (A-1a) in Keopu 3rd, N. Kona.

Date Introduced: November 7, 1973

Copies of the foregoing Bill, in full, are on file in the Office of the County Clerk for use and examination by the public.

---

I hereby certify that the foregoing Bill passed first reading at the meeting of the County Council on November 7, 1973, by the following aye and no vote:

AYES: Councilmen Carpenter, De Luz, Farias, Fujii, Hisaoka, Kawahara, Matayoshi, Yadao and Chairman Yamada - 9.

NOES: None.

*Tadashi Suzuki*

COUNTY CLERK  
COUNTY OF HAWAII

ORDINANCE NO. 1021 (ZONING ORDINANCE), REVISED ORDINANCES OF THE COUNTY OF HAWAII 1967, AS AMENDED, BY CHANGING THE DISTRICT CLASSIFICATION FROM AGRICULTURAL (A-5a) TO AGRICULTURAL (A-3a) AND FROM UNPLANNED (U) TO AGRICULTURAL (A-1a) IN KEOPU 3RD, NORTH KONA, HAWAII, COVERED BY TAX MAP KEY 7-5-24:10-21 and 28-42.

This Bill proposes to amend the North Kona Zone Map by changing the district classification from Agricultural (A-5a) to Agricultural (A-3a) and from Unplanned (U) to Agricultural (A-1a) in Keopu 3rd, N. Kona.

Date Introduced: November 7, 1973  
Copies of the foregoing Bill, in full, are on file in the office of the County Clerk for use and examination by the public.

I hereby certify that the foregoing Bill passed first reading at the meeting of the County Council on November 7, 1973, by the following aye and no vote:

AYES: Councilmen Carpenter, De Luz, Farias, Fujii, Hisaoka, Kawahara, Matayoshi, Yadao and Chairman Yamada - 9.

NOES: None.

TADASHI SUZUKI  
COUNTY CLERK  
COUNTY OF HAWAII

ORDINANCE NO. 615  
(Bill No. 1021-1973)

AN ORDINANCE AMENDING SECTION 7.02, THE NORTH KONA ZONE MAP, ORDINANCE NO. 63 (ZONING ORDINANCE), REVISED ORDINANCES OF THE COUNTY OF HAWAII 1967, AS AMENDED, BY CHANGING THE DISTRICT CLASSIFICATION FROM AGRICULTURAL (A-5a) TO AGRICULTURAL (A-3a) AND FROM UNPLANNED (U) TO AGRICULTURAL (A-1a) IN KEOPU 3RD, NORTH KONA, HAWAII, COVERED BY TAX MAP KEY 7-5-24:10-21 and 28-42.

Date Approved: November 20, 1973  
Date Effective: November 28, 1973

Copies of the foregoing Ordinance, in full, are on file in the Office of the County Clerk for use and examination by the public.

---

I hereby certify that the foregoing Ordinance passed second and final reading at the meeting of the County Council on November 20, 1973, by the following aye and no vote:

AYES: Councilmen Carpenter, De Luz, Farias, Fujii, Hisaoka, Kawahara, Matayoshi, Yadao and Chairman Yamada - 9.

NOES: None.

*Tadashi Suzuki*  
COUNTY CLERK  
COUNTY OF HAWAII

AN ORDINANCE AMENDING SECTION 7.02, THE NORTH KONA ZONE MAP, ORDINANCE NO. 63 (ZONING ORDINANCE), REVISED ORDINANCES OF THE COUNTY OF HAWAII 1967, AS AMENDED, BY CHANGING THE DISTRICT CLASSIFICATION FROM AGRICULTURAL (A-5a) TO AGRICULTURAL (A-3a) AND FROM UNPLANNED (U) TO AGRICULTURAL (A-1a) IN KEOPU 3RD, NORTH KONA, HAWAII, COVERED BY TAX MAP KEY 7-5-24:10-21 and 28-42.

Date Approved: November 20, 1973  
Date Effective: November 28, 1973  
Copies of the foregoing Ordinance, in full, are on file in the Office of the County Clerk for use and examination by the public.

I hereby certify that the foregoing Ordinance passed second and final reading at the meeting of the County Council on November 20, 1973, by the following aye and no vote:

AYES: Councilmen Carpenter, De Luz, Farias, Fujii, Hisaoka, Kawahara, Matayoshi, Yadao and Chairman Yamada - 9.

NOES: None.

TADASHI SUZUKI  
COUNTY CLERK  
COUNTY OF HAWAII

Tadashi Suzuki  
COUNTY CLERK

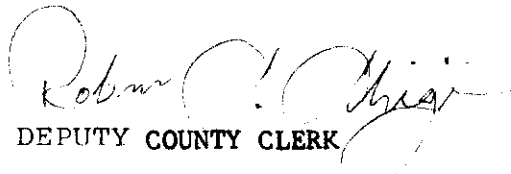


Robert Shioji  
DEPUTY COUNTY CLERK

**OFFICE OF THE COUNTY CLERK**  
COUNTY OF HAWAII  
HILO, HAWAII 96720

Mayor Shunichi Kimura  
County of Hawaii  
Hilo, Hawaii

I hereby transmit Ordinance Bill No. 1021 passed by  
the County Council on second and final reading.

  
DEPUTY COUNTY CLERK

Encl.

Dated: Nov. 21, 1973