

Handwritten notes:
Hales -
Parker Ranch
S.W. map

RECEIVED

COUNTY PLANNING COMMISSION

EEB 15 1966

Date: _____

File No.: _____ *dec. 1966*

February 11, 1966

Mr. Norman Brand
Attorney-in-fact
Parker Ranch
Kamuela, Hawaii

Dear Mr. Brand:

The petition by Parker Ranch, A65-89, to amend the Land Use District Boundaries from an Agricultural District to an Urban District on a portion of Grant 4566, Puukapu Homesteads, First Series, Waimea, South Kohala, Hawaii, TMK 6-4-01: 15, was approved by the Land Use Commission at its meeting on January 14, 1966.

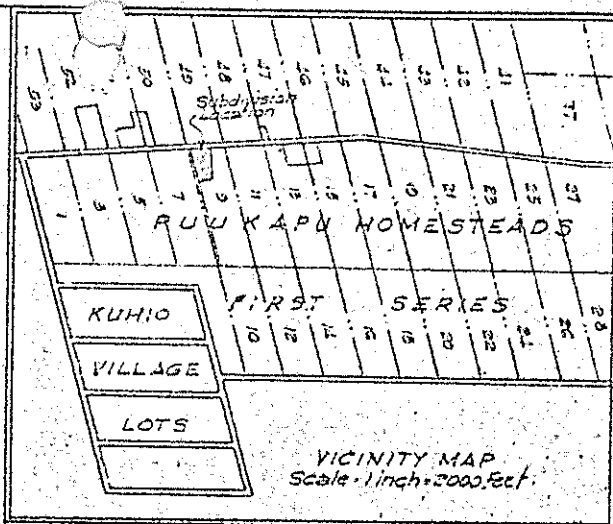
Very truly yours,

Handwritten signature of George S. Moriguchi
GEORGE S. MORIGUCHI
Executive Officer

cc: Chairman **Thompson**
→ Planning Commission, Hawaii
Department of Taxation
Dept. of Land & Natural Resources

OWNER AND SUBDIVIDER
RICHARD SMART
KAMUELA, HAWAII

Richard Smart
His Attorney in Fact



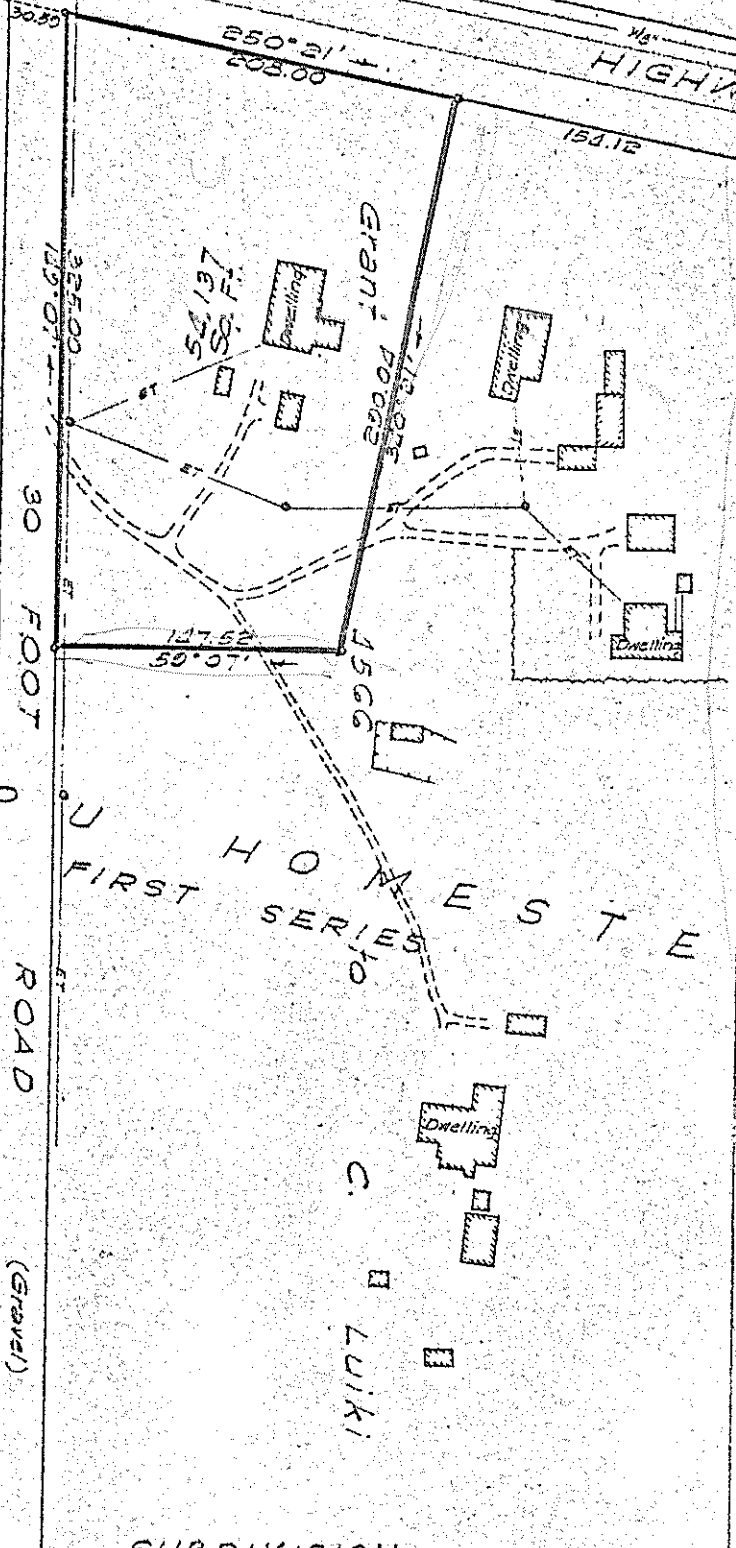
True North
Scale: 1 in. = 100 ft.

MAMALAHOA

HIGHWAY

Grant 4638 to Estate of Helen Johnson

Grant 4598 to David Koki



SUBDIVISION
Being Portion of Grant 4566 to C. Luiki
Puukapu Homesteads, First Series
Waimea, South Kohala, Hawaii

Scale: 1 inch = 100 feet
September, 1964



THIS WORK WAS PREPARED BY ME
OR UNDER MY SUPERVISION
Donald James Murray

TAX MAP KEY: G-4-01
TRACING NO.

PARKER RANCH