

COUNTY OF HAWAII STATE OF HAWAII



BILL NO. 138

ORDINANCE NO. 02 10

AN ORDINANCE AMENDING THE STATE LAND USE BOUNDARIES MAP, H-66 FOR THE COUNTY OF HAWAII, BY CHANGING THE DISTRICT CLASSIFICATION FROM THE AGRICULTURAL TO THE URBAN DISTRICT AT KUKUAU 2<sup>ND</sup>, SOUTH HILO, HAWAII, COVERED BY TAX MAP KEY 2-3-50:71.

BE IT ORDAINED BY THE COUNCIL OF THE COUNTY OF HAWAII:

SECTION 1. The State Land Use Boundaries Map, H-66 for the County of Hawaii, is amended to change the district classification of property described hereinafter as follows:

The district classification of the following area situated at Kukuau 2<sup>nd</sup>, South Hilo, Hawaii, shall be Urban:

Beginning at the north corner of this parcel of land, being the west corner of Lot 20, Sunrise Ridge Subdivision, Unit 2-B and being the northeast corner of Government Land, the coordinates of said point of beginning referred to Government Survey Triangulation Station "HALAI" being 3,094.85 feet South and 616.16 feet West, thence running by azimuths measured clockwise from True South:

1. 318° 51' 13" 146.96 feet along Lot 20, Sunrise Ridge Subdivision, Unit 2-B;
2. 35° 17' 40.00 feet along Lahou Street;
3. Thence along Lahou Street, along a curve to the left with a radius of 45.00 feet, the chord azimuth and distance being: 326° 33' 51.5" 83.86 feet;
4. Thence along Park Site, along a curve to the left with a radius of 12.00 feet, the chord azimuth and distance being: 40° 05' 21.5" 14.70 feet;
5. 2° 20' 167.75 feet along Park Site;

6. Thence along Park Site, along a curve to the right with a radius of 412.00 feet, the chord azimuth and distance being:  
5° 40' 03.5" 47.93 feet;
7. Thence along Park Site, along a curve to the left with a radius of 20.00 feet, the chord azimuth and distance being:  
343° 38' 35.5" 17.13 feet;
8. Thence along Park Site, along a curve to the right with a radius of 34.00 feet, the chord azimuth and distance being:  
7° 13' 32" 51.27 feet;
9. 326° 10' 74.13 feet along Park Site;
10. 35° 41' 30" 289.37 feet along Lot 327, Land Court Application 1205 (Map 73);
11. 139° 09' 4.00 feet along Road Lot "D", a portion of Royal Patent 5706, Land Commission Award 8521-B, Part 2 to G.D. Hueu;
12. 182° 21' 40" 801.40 feet along Government Land to the point of beginning and containing an area of 1.7817 Acres, more or less.

All as shown on the map attached hereto, marked Exhibit "A" and by reference made a part hereof.

SECTION 2. In the event that any portion of this ordinance is declared invalid, such invalidity shall not affect the other parts of this ordinance.

SECTION 3. This ordinance shall take effect upon its approval.

INTRODUCED BY:

  
\_\_\_\_\_  
COUNCIL MEMBER, COUNTY OF HAWAII

Hilo, Hawaii

Date of Introduction: December 19, 2001

Date of 1st Reading: December 19, 2001


Date of 2nd Reading: January 9, 2002

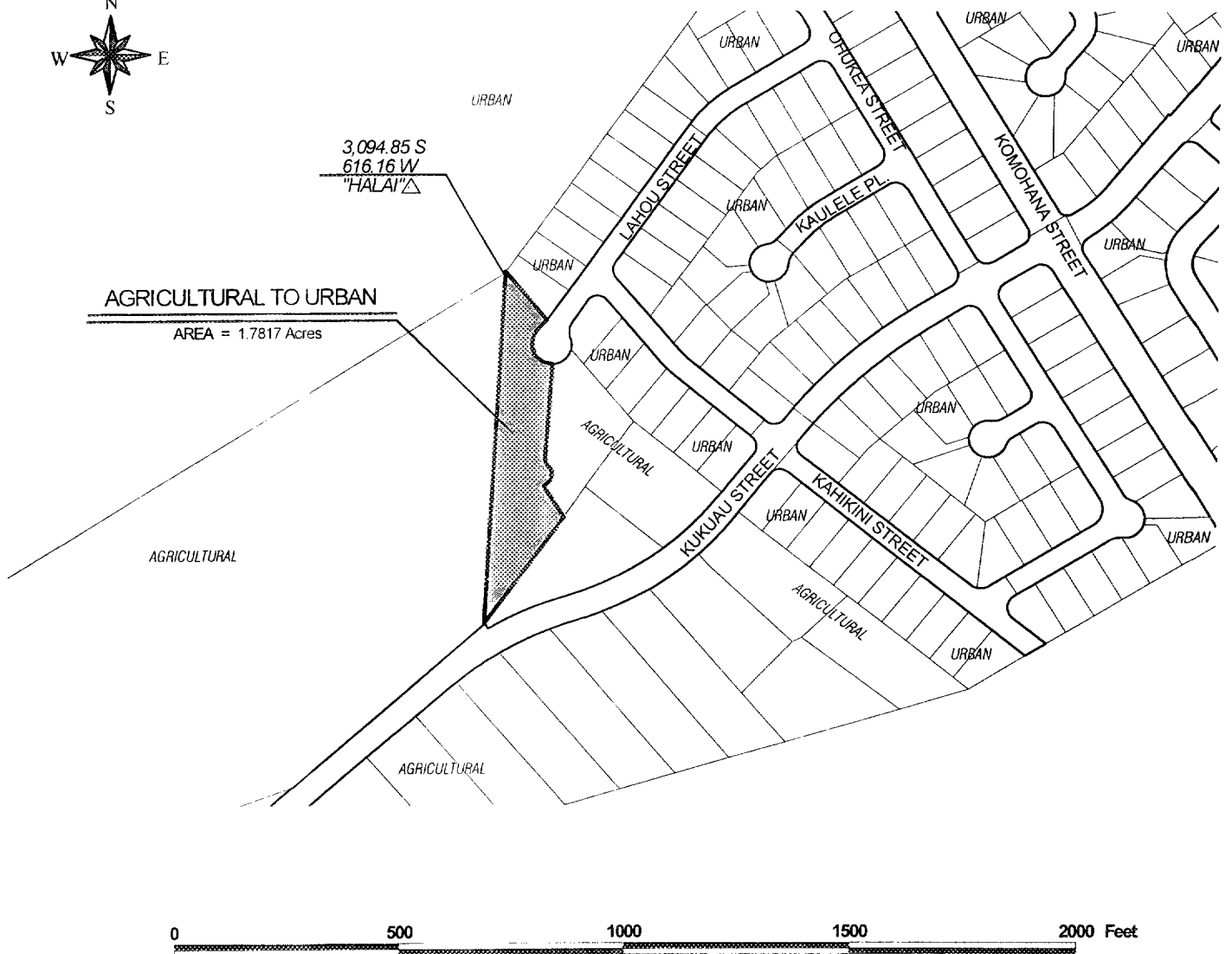
Effective Date: January 17, 2002

REFERENCE: Comm. 428

APPROVED AS TO FORM AND LEGALITY

DEPUTY

  
\_\_\_\_\_  
CORPORATION COUNSEL  
DATED: 1-15-02



# AMENDMENT TO STATE LAND USE BOUNDARIES MAP

AMENDING THE STATE LAND USE BOUNDARIES MAP, H-66 FOR THE COUNTY OF HAWAII,  
BY CHANGING THE DISTRICT CLASSIFICATION FROM  
THE AGRICULTURAL TO THE URBAN DISTRICT  
AT KUKUAU 2nd, SOUTH HILO, HAWAII.

PREPARED BY: PLANNING DEPARTMENT  
COUNTY OF HAWAII

TMK :2-3-50:071

Oct. 5, 2001

EXHIBIT "A"

(Uohara: 01-113)

OFFICE OF THE COUNTY CLERK  
County of Hawaii  
Hilo, Hawaii

Introduced By: Bobby Jean Leithead-Todd  
Date Introduced: December 19, 2001  
First Reading: December 19, 2001  
Published: N/A

REMARKS: \_\_\_\_\_  
\_\_\_\_\_  
\_\_\_\_\_

ROLL CALL VOTE				
	AYES	NOES	ABS	EX
Arakaki	X			
Chung	X			
Elarionoff	X			
Jacobson		X		
Leithead-Todd			X	
Pisicchio	X			
Safarik	X			
Tyler	X			
Yagong	X			
	7	1	1	0

Second Reading: January 9, 2002  
To Mayor: January 11, 2002  
Returned: January 17, 2002  
Effective: January 17, 2002  
Published: January 31, 2002

REMARKS: \_\_\_\_\_  
\_\_\_\_\_  
\_\_\_\_\_

ROLL CALL VOTE				
	AYES	NOES	ABS	EX
Arakaki	X			
Chung			X	
Elarionoff	X			
Jacobson		X		
Leithead-Todd	X			
Pisicchio	X			
Safarik	X			
Tyler	X			
Yagong	X			
	7	1	1	0

I DO HEREBY CERTIFY that the foregoing BILL was adopted by the County Council published as indicated above.

APPROVED AS TO  
FORM AND LEGALITY:

  
DEPUTY CORPORATION COUNSEL  
COUNTY OF HAWAII

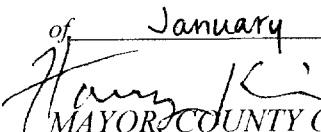
Date 1-15-02

  
COUNCIL CHAIRMAN

  
COUNTY CLERK

Bill No.: 138  
Reference: C-428/PC-48  
Ord No.: **02 10**

Approved/Disapproved this 17<sup>th</sup> day  
of January, 20 02.

  
MAYOR, COUNTY OF HAWAII